

A hybrid partial and general equilibrium modeling approach to assess the hydro-economic impacts of large dams

The case of the Grand Ethiopian Renaissance Dam in the Eastern Nile River basin

Kahsay, Tewodros Negash; Arjoon, Diane; Kuik, Onno; Brouwer, Roy; Tilmant, Amaury; van der Zaag, Pieter

DOI

[10.1016/j.envsoft.2019.03.007](https://doi.org/10.1016/j.envsoft.2019.03.007)

Publication date

2019

Document Version

Accepted author manuscript

Published in

Environmental Modelling & Software

Citation (APA)

Kahsay, T. N., Arjoon, D., Kuik, O., Brouwer, R., Tilmant, A., & van der Zaag, P. (2019). A hybrid partial and general equilibrium modeling approach to assess the hydro-economic impacts of large dams: The case of the Grand Ethiopian Renaissance Dam in the Eastern Nile River basin. *Environmental Modelling & Software*, 117, 76-88. <https://doi.org/10.1016/j.envsoft.2019.03.007>

Important note

To cite this publication, please use the final published version (if applicable).
Please check the document version above.

Copyright

Other than for strictly personal use, it is not permitted to download, forward or distribute the text or part of it, without the consent of the author(s) and/or copyright holder(s), unless the work is under an open content license such as Creative Commons.

Takedown policy

Please contact us and provide details if you believe this document breaches copyrights.
We will remove access to the work immediately and investigate your claim.

Highlights

- A hybrid hydro-economic modeling approach is developed combining existing models
- The value added of the new model is tested on the Grand Ethiopian Renaissance Dam
- Optimal water allocation is simulated using a stochastic-dynamic engineering model
- Results feed into a macro-economic model for a basin and economy-wide perspective
- Integrated modeling increases the credibility of the economy-wide impacts of dams

1
2
3
4 **A hybrid partial and general equilibrium modeling approach to assess the**
5
6 **hydro-economic impacts of large dams – the case of the Grand Ethiopian**
7
8 **Renaissance Dam in the Eastern Nile River basin**
9

10
11
12
13
14
15 **Tewodros Negash Kahsay^{1,2}, Diane Arjoon³, Onno Kuik², Roy Brouwer^{4,2},**
16
17 **Amaury Tilmant³, Pieter van der Zaag^{5,6}**
18

19
20 ¹ Department of Economics, Addis Ababa University, Addis Ababa, Ethiopia

21 ² Institute for Environmental Studies, Vrije Universiteit Amsterdam, the Netherlands

22 ³ Department of Civil and Water Engineering, Université Laval, Québec, Canada

23 ⁴ Department of Economics and the Water Institute, University of Waterloo, Ontario, Canada

24 ⁵ IHE Delft Institute for Water Education, Delft, The Netherlands

25 ⁶ Department Water Management, Delft University of Technology, Delft, the Netherlands
26
27
28
29
30
31
32
33
34
35
36
37
38
39
40
41
42
43
44
45
46
47
48
49
50
51
52
53
54
55
56

57
58
59 **Abstract**
60

61
62 A novel integrated hydro-economic modeling framework that links a bottom-up partial equilibrium
63 (engineering) model with a top-down (economic) general equilibrium model is developed for
64 assessing the regional economic impacts of water resources management and infrastructure
65 development decisions in a transboundary river basin. The engineering model is employed first to
66 solve the water allocation problem for a river system in a partial equilibrium setting. The resulting
67 system-wide changes in optimal water allocation are subsequently fed into the general equilibrium
68 model to provide an economy-wide perspective. This integrated hydro-economic modeling
69 framework is illustrated using the Eastern Nile River basin as a case study. The engineering-based
70 stochastic dual dynamic programming (SDDP) model of the Eastern Nile basin is coupled with the
71 computable general equilibrium (CGE) model GTAP-W to assess the economy-wide impacts of
72 the Grand Ethiopian Renaissance Dam (GERD) on the Eastern Nile economies.
73
74
75
76
77
78
79
80
81
82
83
84
85
86

87 **Key words:** Computable General Equilibrium Modeling, Stochastic Dual Dynamic Programming,
88
89 Grand Ethiopian Renaissance Dam, Eastern Nile Countries
90
91
92
93
94
95
96
97
98
99
100
101
102
103
104
105
106
107
108
109
110
111
112

1. Introduction

There are essentially two approaches to assess the economic performance of major hydraulic infrastructure projects like dams. Both approaches rely on a with-or-without analytical framework where the basic principle is to compare the additional benefits and cost “with” the project to those “without” the project. The two approaches however differ in the underlying model, which can either be a general or a partial economic equilibrium model. In either case, general equilibrium models are best used to determine the economy-wide impacts of a project (Robinson et al., 2008; Wittwer, 2009; Ma et al., 2015), whereas partial equilibrium models typically focus on the basin-wide economic consequences of the project in basin-specific sectors (Jeuland, 2010a; Jeuland, 2010b; Whittington et al., 2005; Block and Strzepek, 2010; Goor et al., 2010; Arjoon et al., 2014).

There are pros and cons to both modelling approaches. General equilibrium (GE) models, like Computable General Equilibrium (CGE), consider the entire economy as a complete, interdependent system, therefore providing an economy-wide perspective. The net benefits of a policy intervention are maximized subject to labor and capital constraints, including natural capital such as water resources (Dellink et al., 2012). However, CGE models are highly aggregated and their results may fail to shed light on relevant hydrological details (Brouwer and Hofkes, 2008). Moreover, CGE models are often criticized as being insufficiently validated and often relying on parameters that are not econometrically estimated (Beckman et al., 2011). Examples of application of CGE models to hydraulic infrastructure include Egypt’s High Aswan Dam (HAD) (Strzepek et al., 2008) and Australia’s Traveston dam (Wittwer, 2009).

169
170
171 Partial equilibrium (PE) models do not consider the often complex feedbacks between the direct
172 and indirect economic impacts of an infrastructural project and are therefore unable to assess its
173 economy-wide consequences. However, unlike CGE models, PE models provide a more detailed
174 representation of the water resources system with spatially distributed supply sources and demands
175 that are interconnected through arcs representing the river network (Harou, 2009). When framed
176 as an optimization problem, a PE model will seek to maximize the water related system-wide
177 benefits in specific economic sectors like agriculture and hydropower that are subject to
178 hydrologic, physical, environmental and policy constraints (Cai et al., 2003). Several studies have
179 analyzed the economic effects of hydraulic infrastructure developments using PE models (see e.g.
180 Jeuland, 2010a; Whittington et al., 2005; Block and Strzepek, 2010; Goor et al., 2010; Tilmant et
181 al, 2012, Bielsa and Duarte, 2001; Bekchanov et al., 2015).

194
195
196 This paper proposes an innovative hybrid modelling framework to assess the economy-wide
197 impacts of large-scale hydraulic infrastructure, whilst providing an engineering economics
198 understanding of the hydrologic system. In other words, the proposed framework aims at
199 reconciling two different scales of analysis: economy-wide and river basin-wide. This is achieved
200 by coupling a CGE model covering the whole economy of a region with a detailed PE model
201 focusing on the sub-region where the infrastructure is planned. Optimal water allocation policies
202 are first determined by the PE model, and then used as input into the CGE model to assess the
203 impacts on the rest of the economy. This coupling enriches the CGE model with relevant
204 hydrologic detail and allows capturing interactions between water and energy dependent sectors,
205 therefore increasing the scope of the approach and improving the validity and reliability of the
206 CGE model.

225
226
227
228
229
230 The proposed integrated modelling framework is illustrated using the Grand Ethiopian
231 Renaissance Dam (GERD) in the Blue Nile River basin as a case study. The dam constitutes the
232 centerpiece of Ethiopia's five-year Growth and Transformation Plan (GTP) (2010/11-2014/15)
233 that targets boosting the country's hydropower generating capacity (MoFED, 2010). The project
234 has been a source of concern for downstream countries Sudan and Egypt. Situated in an arid
235 environment with sparse and insignificant rainfall, downstream countries Egypt and Sudan are
236 heavily dependent on the Nile for their water supply. With annual water withdrawals of 55.5 km³
237 and 16.1 km³, respectively (Jeuland, 2010a), Egypt and Sudan almost exclusively use all the Nile
238 waters. The €3.34 billion hydro-electric dam currently being built in the Blue Nile River, close to
239 the Ethiopian border with Sudan, has a design capacity of 6,000 MW and is reported to be able to
240 produce 15.1 TWh/year upon completion (MDI, 2012). It will have a height of 145 meter and a
241 total storage volume of 74 km³, and is assumed to be used for power generation only. This
242 increases the country's power supply by about 150 percent and would mean a substantial additional
243 energy source for the Ethiopian economy, enough to meet domestic as well as export demand for
244 electricity. Currently, the country is exporting power to North Sudan and Djibouti and plans to
245 expand its export to other neighboring countries. The country's energy export sales are forecasted
246 to grow from 1445 GWh in 2013 to 35,303 GWh by 2037 (EEPSCO, 2013). In fact, Ethiopia is
247 considered one of the major potential exporters of power in the East African Power Pool (EAPP)
248 region that comprises of twelve countries (EAPP, 2014). The domestic demand for electricity is
249 forecasted to increase rapidly from 6.3 TWh/year in 2013 to 40.5 TWh/year in 2023 (EEPSCO,
250 2013). Likewise, total electricity generation from several planned and committed hydro, wind and
251 geothermal power plants is forecasted to increase from about 9.7 TWh/year to 65.7 TWh/year in
252
253
254
255
256
257
258
259
260
261
262
263
264
265
266
267
268
269
270
271
272
273
274
275
276
277
278
279
280

281
282
283 2023 and 146.7 TWh/year in 2037 (EEPCO, 2013) to meet the country's growing domestic and
284
285 export demand for electricity.
286

287
288 Some studies have quantified the economic benefits of the GERD in a partial equilibrium setting
289 using hydro economic modeling approach (Arjoon et al., 2014; Jeulandetal., 2017; Satti et al.,
290 2015; Basheer et al., 2018). Other studies employed a CGE modeling approach to estimate the
291 economic benefits of the dam in the Eastern Nile countries (Ferrari et al., 2013; Kahsay et al.,
292 2015; Kahsay et al., 2018). This study applies a hybrid modeling framework to assess the economic
293 transboundary impacts of the GERD on the Nile economies, and combines the stochastic dual
294 dynamic programming (SDDP) model of the Eastern Nile basin countries (Goor et al., 2010) and
295 the CGE model Global Trade Analysis Project for Water (GTAP-W) (Calzadilla et al., 2010) using
296 the GTAP Africa database for the Nile basin countries. More specifically, the study integrates an
297 SDDP model of the GERD (Arjoon et al., 2014) and a CGE model of the dam (Kahsay et al., 2015)
298 developed, respectively, to evaluate the water system wide and the economy wide effects of the
299 dam in the Eastern Nile countries. The novelty and value added of the hybrid integrated modeling
300 framework presented in this study is that the coupling of the two models generates new information
301 at interconnected spatial scales that would not have been available based on the two models
302 separately. Such coupling has furthermore never been attempted before in the Nile Basin, nor in
303 any other transboundary river basin as far as we know.
304
305
306
307
308
309
310
311
312
313
314
315
316
317
318
319
320
321

322
323
324 The paper is organized as follows. Section 2 presents the integrated modeling framework. Section3
325 discusses the results of the hybrid modelling approach and conclusions are drawn in Section 5.
326
327
328
329
330
331
332
333

2. Integrated modelling framework

In this section, first the partial equilibrium and general equilibrium modelling approaches are described separately. This is then followed by a description of the hybrid integrated modelling framework.

2.1. Partial equilibrium modeling

Partial equilibrium (PE) models generally rely on a network representation of the water resources system to physically connect water demands and supplies. The network is made up of water storages (lakes, reservoirs, groundwater), transmission links (rivers, canals, pipes) and demand nodes. There are essentially two approaches to allocate water in the network: simulation or optimization. Simulation models are mainly descriptive and typically try to answer ‘what if’ questions. This approach must be seen as an extension of simulation-based models in which water demands and allocation policies are additional inputs. Optimization-based PE models, on the other hand, are prescriptive in that they propose the ‘best’ allocation policies. See Heinz et al. (2007), Brouwer and Hofkes (2008) and Harou et al. (2009) for reviews of such PE modelling approaches.

A typical optimization-based PE model will seek to maximize system-wide net benefits Z over a given planning period subject to hydrologic, physical and institutional constraints.

Mathematically, the problem can be written as:

$$\max Z = E\left[\sum_{t=1}^T b_t(x_t, u_t) + v(x_{T+1})\right] \quad (1)$$

subject to

$$g_t(u_t) \leq 0 \quad \forall t \quad (2)$$

$$h_t(x_t) \leq 0 \quad \forall t \quad (3)$$

393
394
395 $x_{t+1} = f_t(x_t, u_t) \quad \forall t \quad (4)$
396
397

398 Where

- 399 - E is the statistical expectation operator for the random data processes such as natural
400 inflows, commodity prices, etc.
401
402
- 403 - $b_t(\cdot)$ is the aggregated net benefits from water allocations during time period t
404
405
- 406 - x_t is the vector of state variables (e.g. reservoir storages in the network, natural inflows)
407
408
- 409 - u_t is the vector of allocation decisions (e.g. reservoir releases, spills, water withdrawals,
410 etc.)
411
412
- 413 - $v(\cdot)$ is a terminal value function at the end of the planning period. This function, which must
414 be seen as a boundary condition, helps preventing the reservoir depletion that would occur
415 at the end of the planning period
416
417
- 418 - g_t is a set of functions constraining the allocation decisions (e.g. upper and lower bounds)
419
420
- 421 - h_t is a set of functions constraining the state variables (e.g. upper and lower bounds)
422
423
- 424 - f_t is a state-to-stage transformation function (e.g. mass balance equation).
425

426 The solutions to this optimization problem are the optimal allocation decisions (u_t^*), the
427 system trajectories (reservoir storages s_t^*) and the shadow prices (λ_t^*) associated with the
428 constraints (2)-(4).
429
430
431
432
433

434 435 **2.2. General equilibrium modeling**

436
437 CGE models are best suited to analyze the direct as well as indirect economic impacts of large-
438 scale policy interventions such as big dams on interconnected economic systems (Robinson et al.,
439 2008). Price endogeneity and market-based interactions among economic agents (e.g. consumers
440 providing the labor in the labor market necessary to produce the goods and services traded in the
441
442
443
444
445

449 goods and services markets) constitute major features of CGE models that render them capable to
 450
 451 examine the total economic impacts of policy interventions on multiple markets at the same time.
 452
 453 The general equilibrium perspective that characterizes CGE models hence provides insights into
 454
 455 the economy-wide impacts of water resources policy. Several studies have used CGE models to
 456
 457 examine a wide range of water related issues (e.g. Seung et al., 1998; Seung et al., 2000; Gomez
 458
 459 et al., 2004; Diao et al., 2005; Brouwer et al., 2008; Dellink et al., 2012). Johansson (2005), Dudu
 460
 461 and Chumi (2008), Brouwer and Hofkes (2008) and Dinar (2014) provide reviews of CGE models
 462
 463 applied to water resources management.
 464
 465
 466
 467
 468
 469

470 Theoretically, water can enter both the production and consumption function in a CGE model.
 471
 472 Below, a simplified representation of the model - without government and international trade - is
 473
 474 given to highlight its main features. Firms maximize profits under the restriction of a given
 475
 476 production technology and at given prices p . Following a nested-Constant Elasticity of Substitution
 477
 478 (CES) production function f (Eq.7), output Y of each sector is produced by intermediate deliveries
 479
 480 from all J sectors (Y^{ID}), N factors of production such as labor and capital services (E^N), and
 481
 482 available raw water (W), under production technology characterized by V elasticities of
 483
 484 substitution (σ) in different “nests” of the production function. Each producer produces one unique
 485
 486 output from the inputs. Assuming full competition and constant returns to scale technologies,
 487
 488 excess profits are assumed to be zero (Eq.8):
 489
 490

$$491$$

$$492 Y_{j,t} = f(Y_{1,j,t}^{ID}, \dots, Y_{J,j,t}^{ID}, E_{j,t}^1, \dots, E_{j,t}^N, W_{j,t}; \sigma_j^1, \dots, \sigma_j^V) \quad \text{for each sector } j \text{ and year } t \quad (7)$$

$$493$$

$$494$$

$$495 0 = \prod_{j,t} = Y_{j,t} - \sum_{j=1}^J Y_{j,t}^{ID} - \sum_{n=1}^N (E_{j,t}^n) - W_{j,t} \quad \text{for each sector } j \text{ and year } t \quad (8)$$

$$496$$

$$497$$

$$498$$

$$499$$

$$500$$

$$501$$

$$502$$

$$503$$

$$504$$

505
506
507 Consumers, represented by a single representative household, maximize utility (Eq.9) under a
508
509 budget constraint (Eq.10) at given prices and given their initial endowments of production
510
511 factors(labor) (E^N) and water (W). In the GTAP model, for example, consumers first allocate
512
513 income between consumption and savings according to a Cobb-Douglas (CD) function h . A
514
515 nested, non-homothetic constant difference of elasticities (CDE) utility function g is used to
516
517 maximize welfare derived from consumption. Preferences are characterized by elasticities of
518
519 substitution (β) and elasticities of income (γ) in different “nests” of the utility function. The
520
521 consumption bundle that maximizes welfare includes water services from the water services sector,
522
523 $C_{w,t}$ in Eq.9.

$$524 U_t = h(S_t, g(C_{1,t} \dots C_{w,t} \dots C_{J,t}; \beta^1 \dots \beta^W, \gamma^1 \dots \gamma^W)) \quad (9)$$

$$525 \sum_{j=1}^J (C_{j,t}) + S_t = \sum_{n=1}^N (\bar{E}_t^n) + \bar{W}_t \quad (10)$$

526
527
528
529
530
531
532
533
534
535
536 On the consumption side, Eq. (10) identifies that income generated from the employment of the
537
538 endowments (labour and water) equals consumption and savings since there are no excess profits
539
540 on the production side.

541
542
543 Market clearance is assumed for the goods market (Eq.11), the endowments market (Eq.12) and
544
545 the water market (Eq. 13) for each year. In the goods market, total output is equal to the sum of
546
547 internal deliveries $Y_{j,t}^{ID}$, final consumption $C_{j,t}$ and investment demand $I_{j,t}$.

$$548 Y_{j,t} = \sum_{j=1}^J Y_{j,t}^{ID} + I_{j,t} + C_{j,t} \quad \text{for each sector } j \text{ and year } t \quad (11)$$

549
550
551
552
553 In the endowments markets, total demand for endowments is equal to the exogenous supply of
554
555 endowments in each year (marked by the bar above the variable):
556
557

561
562
563 $\sum_{j=1}^J E_{j,t}^n = \bar{E}_t^n$ for each endowment n and year t (12)
564
565

566
567 $\sum_{j=1}^J W_{j,t} = \bar{W}_t$ for each year t (13)
568
569

570 Finally, investments equal savings for each year (Eq. 14):
571

572
573 $S_t = \sum_{j=1}^J I_{j,t}$ for each year t (14)
574
575
576
577

578 The dynamics of the model are driven by scenario-specific, exogenous growth of the total
579 endowments of factors of production \bar{E}^n and water \bar{W} , and by an increase in total factor
580 productivity (that is not shown in the equations above).
581
582
583
584
585
586
587

588 The first order condition for profit maximization (Eq. 8) is that the factors of production, including
589 water, are allocated across alternative productive uses such that their marginal values are equal
590 across all uses and equal to their market prices. Hence, our CGE model treats raw water as a normal
591 factor of production with a market price. Econometric models are usually used to derive the
592 marginal productivity (and hence shadow price) of non-priced water in production processes of
593 marketed goods and services, while surveys often underlie the estimation of marginal willingness
594 to pay for the enjoyment of non-priced water resources in a household's welfare function. Market
595 clearing for outputs and inputs is the main mechanism to solve the set of mathematical equations
596 in a CGE model, setting production equal to consumption, and investments in capital accumulation
597 through time occur through savings.
598
599
600
601
602
603
604
605
606
607
608
609
610
611
612
613
614
615
616

2.3. Integrated modelling framework

The integrated modeling framework links a bottom-up stochastic PE model (SDDP) with a top-down CGE model (GTAP-W) for assessing the transboundary economic impacts of water resource management and infrastructure development in a shared river basin. The PE model is used to solve the water allocation problem for a river system in a partial equilibrium setting. The resulting water system-wide changes in optimal water allocation (e.g. agricultural output and hydropower generation) are then used as inputs in the CGE model to derive an economy-wide perspective on the total direct and indirect economic impacts of the water resources management and development decisions in the water system. Hence, the outputs of the PE model serve as inputs into the CGE model.

The PE model seeks to maximize the expected basin-wide net benefits from irrigated agriculture and hydropower generation taking into account the hydrologic uncertainty. The optimization problem is solved using a stochastic dual dynamic programming algorithm (SDDP) (Tilmant et al., 2008). This algorithm removes the computational burden associated to dynamic programming by constructing a locally accurate approximation of the objective function. To achieve this, the algorithm relies on an iterative process involving two phases. In the optimization phase, the approximation of the objective function is constructed stage by stage as the algorithm progresses backward. Then, once reaching the first stage, a forward simulation phase is initiated in order to test how good the approximation is. In this phase, the decision-making problem is solved forward for a given number of stream flow sequences that capture the hydrologic uncertainty. At the end of the simulation phase, the algorithm provides time series of reservoirs' releases, evaporation losses, spillages losses, water withdrawals for off-stream uses as well as the shadow prices of the

673 constraints imposed on water use and allocation in equations (2)-(4). In this study, the planning
674 period is 10 years, the decision-making problem is solved on a monthly time step ($T = 120$) and
675 there are 30 hydrologic sequences in the simulation phase. As explained in Tilmant and Kinzelbach
676 (2012), to avoid the influence of the boundary conditions – initial storage and terminal value
677 function - on the allocation decisions, the results are analyzed for year five only ($t = 61, \dots, 72$).
678
679
680
681
682
683
684
685
686
687

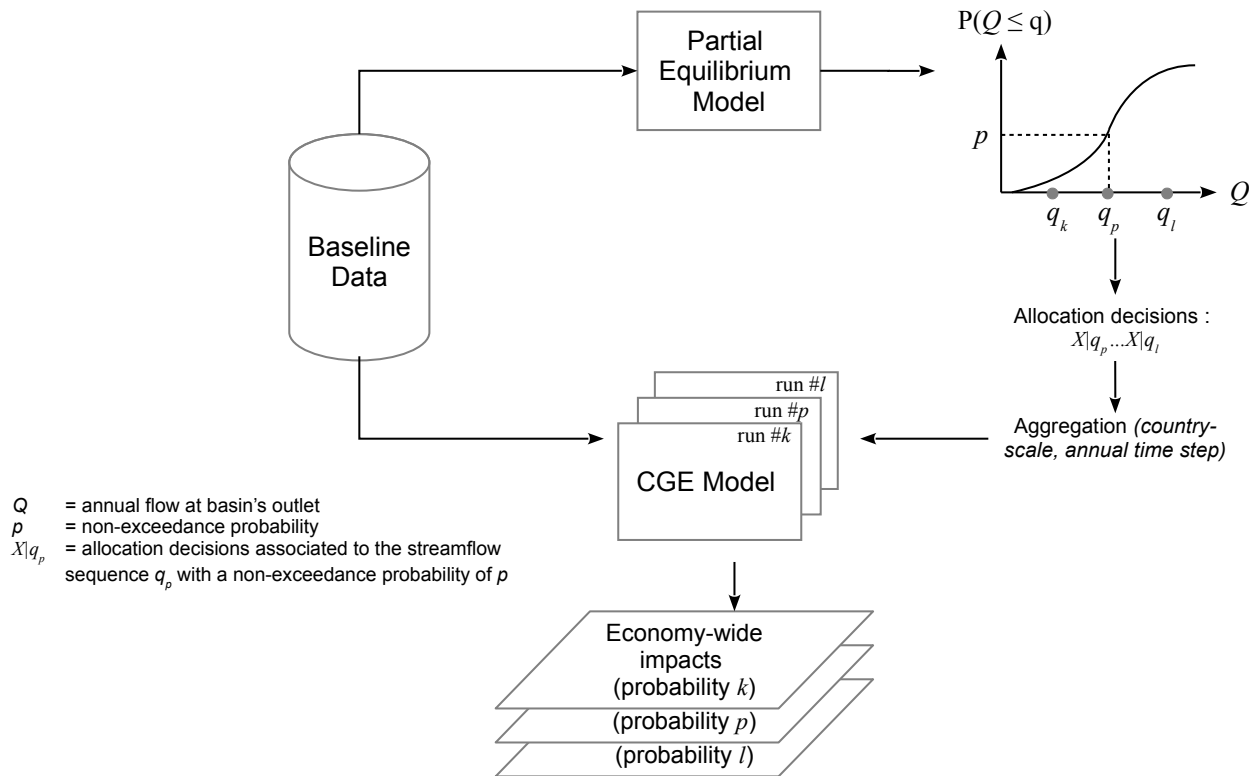
688 Due to the stochastic nature of this PE model, each result is characterized by a vector of 30 values
689 than can be used to trace out the empirical statistical distribution. When coupling the stochastic PE
690 to the CGE model, it is therefore possible to assess the economy-wide impacts of a project under
691 contrasting hydrologic conditions (e.g. dry versus wet years). Ignoring potential long-term
692 hydrologic persistence and non-representativeness due to year-to-year variation, the annual stream
693 flow sequence (q_p) corresponding to a particular non-exceedance probability (p) can be directly
694 selected from the set of streamflow sequences used in the simulation phase of the optimization
695 algorithm. With this approximation, the associated allocation decisions ($X|q_p$) can be extracted
696 and aggregated at country and annual time step scale before being transferred to GTAP-W. This
697 procedure is illustrated in Figure 1 where the economy-wide impacts are assessed under, say, three
698 different hydrologic conditions corresponding to the k^{th} , p^{th} and l^{th} percentiles of the statistical
699 distribution of the natural river discharges at the basin's outlet during year five. Imagine, for
700 example, that the analysis must be carried out for dry conditions with a return period of 10 years.
701 The PE results would in that case correspond to the allocation decisions taken with an annual
702 stream flow sequence with a non-exceedance probability of 10 percent. In this study, the economy-
703 wide impacts of GERD are assessed for dry, normal and wet hydrologic conditions corresponding
704 to the 10th percentile, average, and 90th percentile of the statistical distribution of the Nile River
705
706
707
708
709
710
711
712
713
714
715
716
717
718
719
720
721
722
723
724
725
726
727
728

729
 730
 731 outflows. Table 1 lists the allocation decisions that are transferred from the PE model to the GTAP-
 732
 733 W model.
 734
 735
 736
 737

738 **Table 1. Information transferred from SDDP to GTAP-W**

Decision	Units	Aggregation
Irrigation withdrawal	Million m ³ /crop/node/month	Country scale Annual time step
Hydropower generation	GWh/power plant/month	

748
 749
 750 **Figure 1. Overview of the integrated modelling framework**



785
786
787 More specifically, the PE model of the Eastern Nile Basin includes 9 irrigation demand sites and
788
789 12 hydropower plants located in the three Eastern Nile countries: 2 irrigation sites and 4
790
791 hydropower plants in Ethiopia, 6 irrigation sites and 5 hydropower plants in Sudan, and 2 irrigation
792
793 sites and 3 hydropower plants in Egypt. Figure 2 depicts the schematic overview of the nodes
794
795 comprised of all major reservoirs, hydropower plants and irrigation schemes as well as the river
796
797 reaches considered in the model. The model solves the water resources allocation problem on a
798
799 monthly time step and using 30 different hydrologic scenarios to capture the short-term (seasonal)
800
801 natural variability of river discharges throughout the system. The 30 hydrologic scenarios are
802
803 generated by a built-in autoregressive (AR) model of order one whose parameters are also needed
804
805 to construct the approximation of the objective function. This built-in AR model plays an essential
806
807 role in the SDDP algorithm, but it is unable to handle the long-term persistence that characterizes
808
809 the flow regime of rivers like the Nile. This shortcoming must be weighed against the benefits of
810
811 the joint optimization of all allocation decisions in the system. See Arjoon et al. (2014) for a
812
813 detailed mathematical description of the model.
814
815
816
817
818

819 The CGE model applied in this study is the Global Trade Analysis Project (GTAP) model (Hertel,
820
821 1997), developed at the Center for Global Trade Analysis, Purdue University, USA, for use in
822
823 global trade analysis. GTAP provides a global modeling framework and a common global
824
825 database, providing the opportunity to conduct comparable model implementations and policy
826
827 simulations. GTAP is a static-comparative, multi-region, multi-sector CGE model of the world
828
829 economy that examines all major aspects of an economy via its general equilibrium feature. The
830
831 GTAP model comprises accounting relationships, behavioral equations and global sectors required
832
833 to complete the model. The accounting relationships of the model ensure the balance of receipts
834
835
836
837

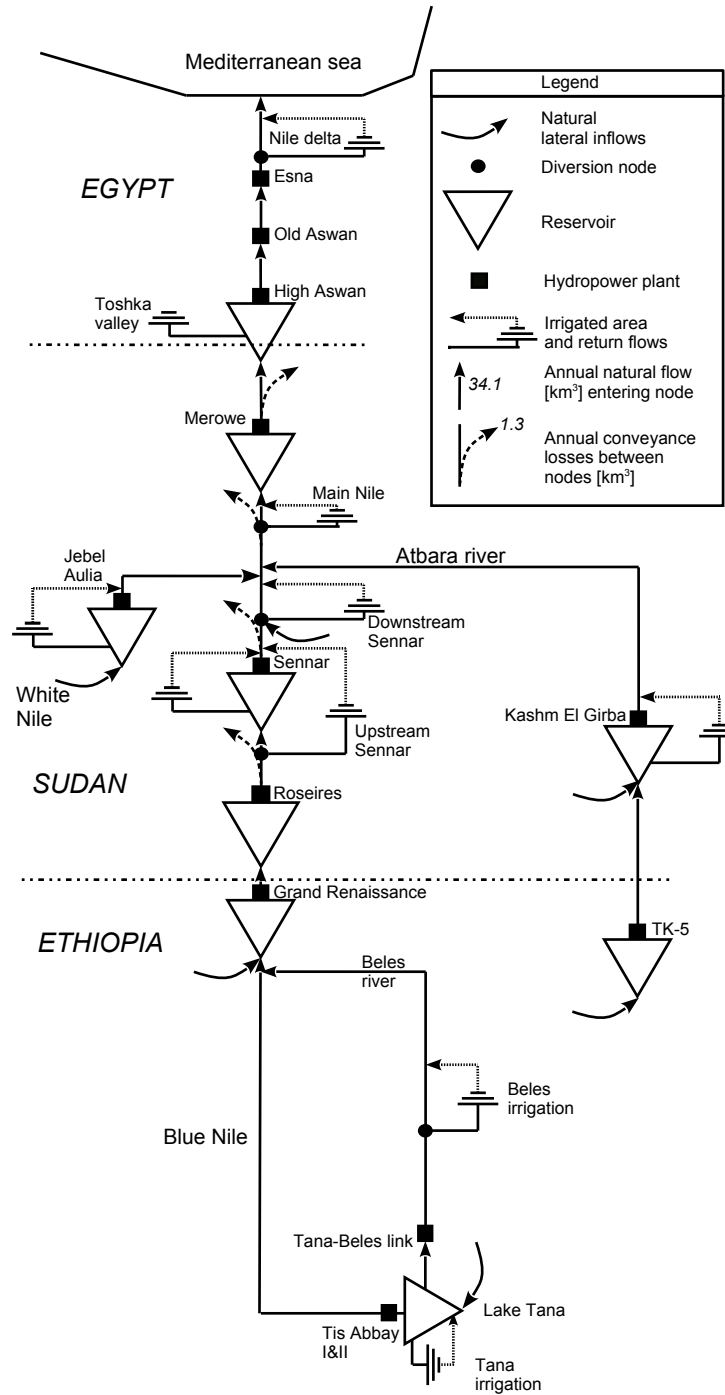
841
842
843 and expenditures for every agent identified in the economy, whereas the behavioral equations
844
845 specify the behavior of optimizing agents in the economy (i.e. production and demand functions)
846
847 based on microeconomic theory (Brockmeier, 2001).
848
849
850

851
852 The analysis presented here is the version of the GTAP-W model (Calzadilla et al., 2010) that
853
854 distinguishes between rainfed and irrigated agriculture and incorporates water as a factor of
855
856 production directly substitutable in the production process of irrigated agriculture. To account for
857
858 water, the model disaggregates the agricultural land endowment in the standard GTAP database
859
860 into rainfed land, irrigated land and irrigation water. Following Calzadilla et al. (2011), the relative
861
862 share of rainfed and irrigated agriculture in total production is used to split the land rent in the
863
864 original GTAP database into a value for rainfed land and a value for irrigated land for each crop
865
866 in each region. In the next step, the ratio of irrigated yield to rainfed yield is used to split the value
867
868 of irrigated land into the value of irrigable land and the value of irrigation water. The production
869
870 system is set up as a series of nested constant elasticities of substitution (CES) functions combined
871
872 through substitution elasticities (see Figure 3).
873
874
875

876
877 The GTAP-W model of the Eastern Nile region uses the GTAP Africa Data Base, which is divided
878
879 for the purpose of the present study into seven regions: Ethiopia, Sudan including South Sudan,
880
881 Egypt, the Equatorial Lakes (EQL) region, Rest of North Africa, Rest of Sub-Sahara Africa and
882
883 Rest of the World (ROW). Since the focus of the study is exclusively on the Eastern Nile region
884
885 that is directly affected by the GERD, the regional aggregation highlights the importance of the
886
887 three Eastern Nile countries (see Appendix A). The 57 sectors in the GTAP Africa Data Base are
888
889
890
891
892
893
894
895
896

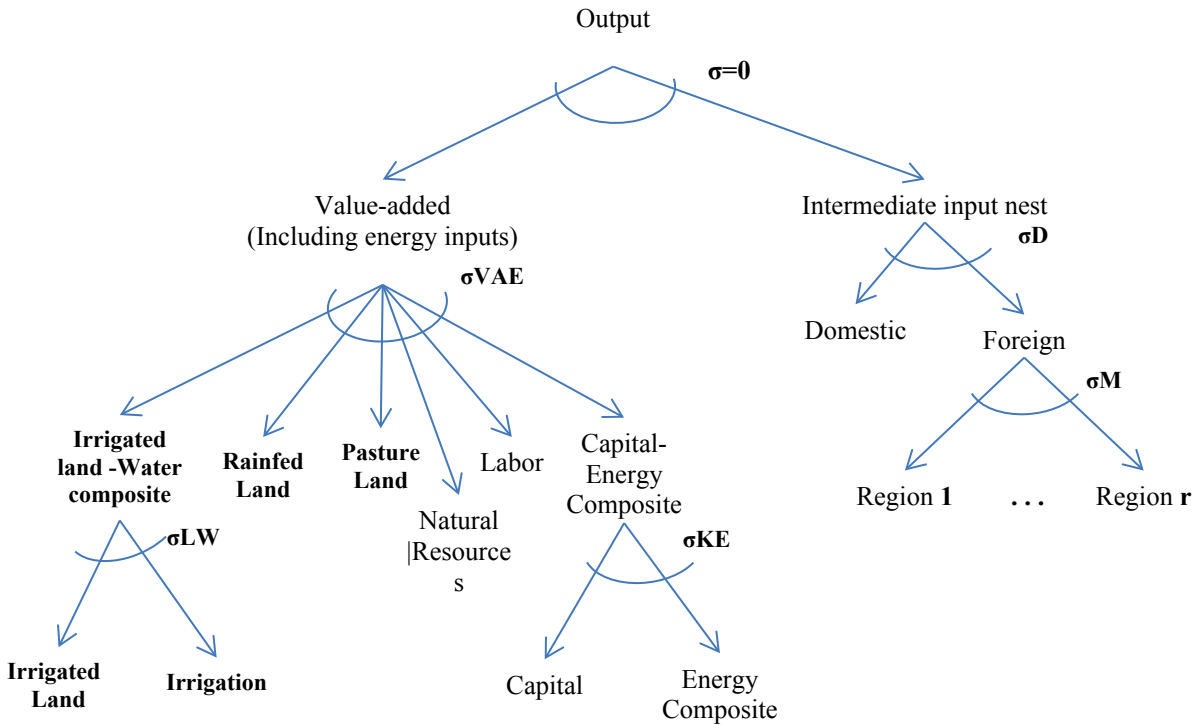
aggregated for the purpose of this study into 17 sectors, of which 8 are agricultural sectors and 9 non-agricultural sectors (see Appendix B).

Figure 2. Schematic overview of the Eastern Nile Basin in the PE model



953
954
955
956
957
958
959
960
961
962
963
964
965
966
967
968
969
970
971
972
973
974
975
976
977
978
979
980
981
982
983
984
985
986
987
988
989
990
991
992
993
994
995
996
997
998
999
1000
1001
1002
1003
1004
1005
1006
1007
1008

Figure 3. GTAP-W nested production structure



Source: Calzadilla et al. (2010).

Explanatory notes:

σ is the constant elasticity of substitution (CES) between value added and intermediate inputs.

σ_{VAE} : CES between primary factors.

σ_{LW} : CES between irrigated land and irrigation water.

σ_{KE} : CES between capital and energy composite.

σ_D : CES between domestic and imported inputs.

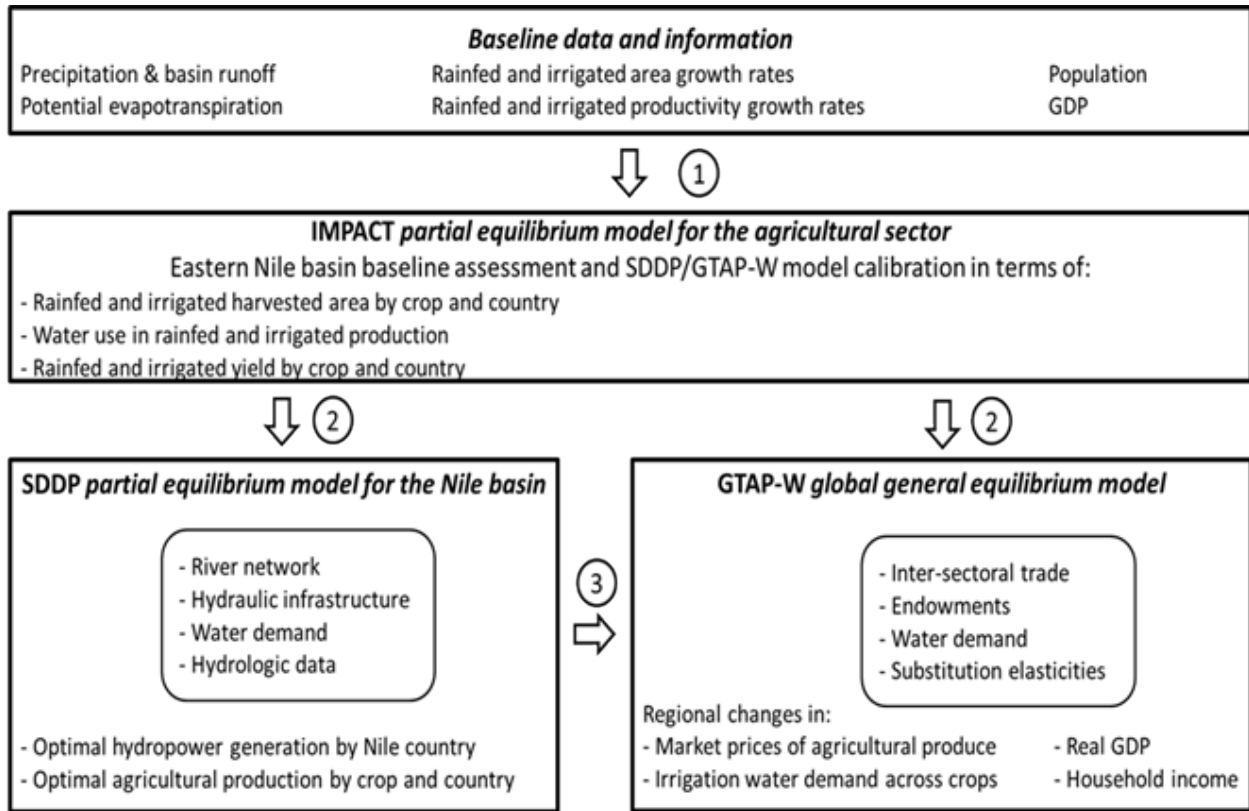
σ_M : CES between imported inputs.

To ensure that the PE and CGE models start from the same baseline conditions in the Nile basin and apply the same crop yield functions, detailed data on land and water use as well as crop yields specified per country are derived from the International Model for Policy Analysis of Agricultural Commodities and Trade (IMPACT) database developed at the International Food Policy Research Institute (IFPRI) (Rosegrant et al., 2008). The IMPACT data provides detailed data for the year 2000 and simulation data until the year 2050 with respect to irrigation water use, crop yields and

1065
1066
1067 cropped area, distinguishing between 20 rainfed and irrigated crops and 281 food processing units
1068 (FPU's) for 115 economies and 126 river basins. The FPU's constitute spatial units defined by
1069 political boundaries and major river basins.
1070
1071
1072
1073

1074 Figure 4 provides a flow diagram of the process of linking the SDDP and GTAP-W models of the
1075 Eastern Nile basin. In a first step, detailed IMPACT data on land use in irrigated and rainfed
1076 agriculture, irrigated and rainfed yield, water use in irrigated and rainfed production specified per
1077 country are used to calibrate and benchmark the baseline of the SDDP and GTAP-W models. The
1078 SDDP model is then employed in a second step to solve the water allocation problem in the Eastern
1079 Nile basin with GERD online in a dynamic setting. The SDDP-derived changes in optimal water
1080 allocation, agricultural output and hydropower generation are then in a final step implemented in
1081 the CGE model to estimate the direct and indirect economic impacts of the dam on the Eastern
1082 Nile countries. In principle, a feedback loop whereby the outputs of the GTAP-W model are fed
1083 back as inputs into the SDDP model could be imagined. This procedure would update land and
1084 water use and crop yield and thereby further refine the optimization procedure. However, this
1085 feedback procedure is deferred to future study.
1086
1087
1088
1089
1090
1091
1092
1093
1094
1095
1096
1097
1098
1099
1100
1101
1102
1103
1104
1105
1106
1107
1108
1109
1110
1111
1112
1113
1114
1115
1116
1117
1118
1119
1120

Figure 4. Integrated modelling framework



3. Results

3.1. Partial equilibrium results

The PE model is employed to identify changes in hydropower generation and irrigation water supply (crop production) in the Eastern Nile countries due to GERD operation. Table 2 lists the main results corresponding to the driest, average and wettest hydrologic conditions in the Eastern Nile Basin. The GERD is not expected to entail a significant reduction of water flowing downstream as the evaporation rates in the Upper Blue Nile are negligible compared to the rest of the Eastern Nile Basin. As a matter of fact, our simulated evaporation losses from GERD (672 MCM/y) correspond to merely 4 percent of the combined evaporation from the other man-made reservoirs in the Eastern Nile basin.

1177
1178
1179 The PE model results indeed reveal that water supply and hence crop production remains
1180 unchanged in Egypt and more or less stable in Ethiopia, while Sudan would gain substantial
1181 improvements in irrigation water use as well as land use and hence crop production with GERD
1182 operating upstream (Table 2). Sudan gains a substantial increase in water and land use and crop
1183 output mainly during dry hydrological conditions and to a lesser extent during average
1184 hydrological conditions. Irrigation water, irrigated land use, and crop output in the country increase
1185 by 2.8-79.5 percent, 1.7-79.5 percent and 0.3-79.5 percent, respectively, during dry hydrological
1186 conditions. The country gains a 0.1 to 47.8 percent increase in irrigation water use, land use and
1187 crop output during average hydrological conditions. However, Sudan's gains in terms of water
1188 and land use and crop output during wet hydrological conditions are relatively low (9.1-15.1%)
1189 and limited to a few crops (other cereals and other crops). Thus, Sudan benefits from increased
1190 water availability during dry years from water stored in the GERD reservoir during wet years.
1191 Overall, Sudan gains 4.6, 2.6 and 0.9 km³ of irrigation water during dry, average and wet
1192 hydrological conditions, respectively, with GERD operating upstream. With the baseline irrigation
1193 water use level in Sudan standing at 12.9, 15.4 and 17.3 km³ during dry, average and wet years,
1194 the total water use in the country due to GERD operation increases to 17.5, 18 and 18.2 km³,
1195 respectively. The baseline water use in Sudan refers to demands in the year 2000. This is also
1196 based on a hypothetical situation that assumes full collaboration occurs across the riparian
1197 countries in the basin. Actual water uses across crops before and after the GERD are reported in
1198 Appendix D. The figures for irrigation land expansion in Sudan are in the order of 616.6, 361.5
1199 and 132.9 thousands of hectares, respectively. The substantial increases in irrigation water and
1200 land use increases total crop output in the country by 117.8, 419.6, and 132.9 tons, respectively,
1201 during dry, average and wet hydrological conditions.
1202
1203
1204
1205
1206
1207
1208
1209
1210
1211
1212
1213
1214
1215
1216
1217
1218
1219
1220
1221
1222
1223
1224
1225
1226
1227
1228
1229
1230
1231
1232

1233
1234
1235 Recent studies (Arjoon et al., 2014; Digna et al., 2018) have shown that if the riparian countries
1236
1237 were to cooperate under a scenario with large irrigation expansion in Sudan, increased water use
1238
1239 in that country could partially be compensated by re-operating the downstream reservoirs at lower
1240
1241 pool elevation in order to reduce evaporation losses. In this study, however, although water
1242
1243 diversions in Sudan are increasing with GERD online, the difference is not significant enough and
1244
1245 HAD does not require to be re-operated at lower pool elevation in order to reduce evaporation
1246
1247 losses.
1248
1249
1250

1251 Table 3 lists the main terms of the mass balance in the basin. Those volumes correspond to the
1252
1253 average annual flows derived from the 30 synthetically-generated hydrologic scenarios used in the
1254
1255 simulation phase of the partial equilibrium model (SDDP). Each simulation is 10 years long and
1256
1257 we only analyze the results of year 5 to avoid distortions caused by boundary conditions. Hence,
1258
1259 for year 5 we have 30 simulations, and the terms of the mass balance are the annual averages over
1260
1261 these 30 simulations. When losses through consumptive uses are accounted for in Sudan and
1262
1263 Ethiopia, the average annual flow entering Egypt is 66 km³. The majority of those losses are due
1264
1265 to irrigation water withdrawals in Sudan. Subtracting the evaporation losses at HAD (10.6 km³),
1266
1267 the annual volume of water available to Egypt is 55.53 km³, which is in accordance with Egypt's
1268
1269 share as per the 1959 treaty (55.5 km³), and very close to IMPACT data on Egypt's water demand
1270
1271 in the agricultural sector (53.7 km³). Our results indicate that a further increase of consumptive
1272
1273 uses upstream, beyond those considered in this study, combined with a lack of cooperation, would
1274
1275 likely affect Egypt's water supply.
1276
1277
1278
1279
1280
1281
1282
1283
1284
1285
1286
1287
1288

Table 2. Estimated percentage change in irrigation water allocation and irrigated land use across crops and optimal crop output due to GERD based on the PE model*

	Change in irrigation water use (%)						Change in irrigated land use (%)						Change in crop output (%)					
	Ethiopia			Sudan (pre 2011)			Ethiopia			Sudan (pre 2011)			Ethiopia			Sudan (pre 2011)		
	Hydrologic condition			Hydrologic condition			Hydrologic condition			Hydrologic condition			Hydrologic condition			Hydrologic condition		
	Dry	Average	Wet	Dry	Average	Wet	Dry	Average	Wet	Dry	Average	Wet	Dry	Average	Wet	Dry	Average	Wet
Rice	0.0	0.0	0.0	19.8	3.5	0.0	0.0	0.0	0.0	19.8	3.5	0.0	0.0	0.0	0.0	19.8	3.5	0.0
Wheat	0.0	0.0	0.0	10.7	0.3	0.0	0.0	0.0	0.0	10.7	0.3	0.0	0.0	0.0	0.0	10.7	0.3	0.0
Other cereals	0.0	0.0	0.0	57.5	29.5	9.2	0.0	0.0	0.0	57.5	29.5	9.1	0.0	0.0	0.0	57.3	29.4	9.1
Other crops	0.0	0.0	0.0	79.5	47.8	15.1	0.0	0.0	0.0	79.5	47.8	15.1	0.0	0.0	0.0	79.5	47.8	15.1
Fruits & vegetables	-3.1	-0.8	0.0	2.8	0.1	0.0	-1.1	-0.3	0.0	1.7	0.1	0.0	-1.3	-0.3	0.0	0.3	0.0	0.0
Oilseeds	0.0	0.0	0.0	9.7	0.3	0.0	0.0	0.0	0.0	9.7	0.3	0.0	0.0	0.0	0.0	9.7	0.3	0.0
Sugar cane, sugar beet	0.0	0.0	0.0	20.3	1.9	0.0	0.0	0.0	0.0	20.3	1.9	0.0	0.0	0.0	0.0	20.3	1.9	0.0
Total	-1.1	-0.3	0.0	35.4	16.6	5.4	-0.5	-0.1	0.0	37.8	18.7	6.0	-0.3	-0.1	0.0	20.7	6.6	2.0

*No changes in irrigation water use, irrigated land use and crop output are observed for Egypt

Table 3. Water balance of the Eastern Nile as used in the PE model (km³/year)

	Without GERD	With GERD
Natural inflow	94.600	94.600
Natural evaporation	7.283	7.123
Evaporation reservoirs ET	0	0.672
Evaporation reservoirs SU	6.412	6.637
Consumptive use ET	0.189	0.189
Consumptive use SU	11.858	13.839
Inflow EG	68.859	66.140
Evaporation HAD	10.337	10.612
Outflow HAD	58.522	55.528

Explanatory note: ET = Ethiopia, SU = Sudan, EG = Egypt, HAD = High Aswan Dam

When GERD is online, the downstream reservoirs on the Blue Nile and Nile can be operated at higher pool elevation since much of the inflows is now regulated. Consequently, the evaporation losses from those reservoirs increase by 1.161 km³/year (Table 3), therefore reducing the inflows reaching Egypt.

The SDDP model results also reveal that the GERD will substantially boost the energy generation in the Eastern Nile countries. With GERD online, hydropower generation in Ethiopia and Sudan will increase by 354.9-765.4 and 4.8-16.6 percent or 10.5 to 17.8 and 0.4 to 0.8 TWh/year respectively depending on the hydrological condition that may prevail in the basin, while Egypt would see little change (0.2-0.7% or 0.03-0.06 TWh/year) in the status quo (Table 4). Under average hydrological conditions, hydropower generation in Ethiopia and Sudan increases by 505.1 and 6.4 percent or 14.4 and 0.5 TWh/year respectively, it remains stable in Egypt. The electricity

sector in the standard GTAP database is an aggregate of different power generation activities. Although the Eastern Nile basin countries derive electricity from different sources, the model has only one electricity sector. Therefore, the change in hydropower supply due to the GERD is simulated as a percentage change in the total supply of electricity. Available data shows regional variation in the source of electric power generation in the Eastern Nile Basin countries. Ethiopia and Sudan rely on hydropower for as much as 99 and 75 percent of their electric power supply, respectively, while Egypt heavily relies on natural gas and derives less than 10 percent of its electricity from hydropower (Table 4). As shown in Table 4, the change in hydropower supply resulting from GERD operation and the relative share of hydropower in total electricity production in these countries is used to induce the required policy intervention in the electricity sector. Details of changes in hydropower generation in Egypt's hydropower facilities induced by GERD are provided in Appendix C.

Table 4. The expected impact of GERD on hydropower generation and overall electricity production based on the PE model

	Hydropower generation**									Share of hydropower in electricity production* (%)	Change in electricity generation due to GERD (%)		
	With GERD (TWh/yr)			Without GERD (TWh/yr)			Change (%)				Hydrologic condition		
	Hydrologic condition			Hydrologic condition			Hydrologic condition				Hydrologic condition		
	Dry	Average	Wet	Dry	Average	Wet	Dry	Average	Wet		Dry	Average	Wet
Egypt	10.1	12.6	15.9	9.4	12.7	15.5	7.9	-0.7	2.5	8.3	0.7	-0.1	0.2
Ethiopia	12.0	17.4	23.0	1.4	2.9	5.0	773.2	510.2	358.5	99.0	765.4	505.1	354.9
Sudan	5.8	6.9	8.6	4.8	6.3	8.1	22.1	8.5	6.4	75.2	16.6	6.4	4.8

Source: *World Development Indicators (2013).

** Tractebel Engineering GDF Suez and Coyne et Bellier, Hydrological and Reservoir Simulations Studies, GERD Project Impounding and Operation Simulations Impact Study on High Aswan Dam. Unpublished Report Commissioned by the Ethiopian Electric Power Corporation (EPCO), Addis Ababa, 2011.

3.2. General equilibrium results

GTAP-W simulations are run with the following assumptions: (1) the construction of the GERD is expected to increase Ethiopia's capital stock and domestic saving by about 10 percent (Kahsay et al., 2015) regardless of the hydrologic conditions; (2) electricity supply, irrigation water use and irrigated lands vary according to the hydrologically-dependent allocations determined by the PE model (see section 3-1). Table 5 presents the simulation scenarios considered for the GTAP-W model implementation, the results of which are presented below.

Table 5. Simulation scenarios in the Eastern Nile basin countries for the GTAP-W model (% change from the baseline conditions)

	Egypt			Ethiopia			Sudan (pre-2011)		
	Hydrologic condition			Hydrologic condition			Hydrologic condition		
	Dry	Average	Wet	Dry	Average	Wet	Dry	Average	Wet
Electricity supply	0.7	-0.1	0.2	765.4	505.1	354.9	16.6	6.4	4.8
Irrigation water use	0.0	0.0	0.0	-1.1	-0.3	0.0	35.4	16.6	5.4
Irrigated land use	0.0	0.0	0.0	-0.5	-0.1	0.0	37.8	18.7	6.0
Capital stock	0.0	0.0	0.0	10.0	10.0	10.0	0.0	0.0	0.0
Domestic saving	0.0	0.0	0.0	10.0	10.0	10.0	0.0	0.0	0.0

This section presents the results of the simulations based on GTAP-W to assess the direct and indirect economic effects of GERD operation on the Eastern Nile economies. We use changes in real GDP, market prices of agricultural produce, irrigation water demand across crops, household income and consumption expenditures and overall welfare effects relative to the baseline situation as indicators of the economic effects of the dam.

The simulation results shown in Table 6 reveal that Sudan is able to withdraw more water, particularly during the dry and average hydrologic conditions, which is the result of more constant flows in the Blue Nile. Water use in irrigated agriculture increases considerably in the agricultural sectors in Sudan. Irrigation water use increases 2.9 to 77.8 percent in Sudan's agricultural sectors

1499
1500
1501 during dry hydrological conditions. During average hydrological conditions, irrigation water use
1502 in Sudan increases substantially in the rice, other cereals and other crops sectors (3.5-47.6%) and
1503 increases lightly in the remaining sectors. In the case of wet hydrological conditions, water use
1504 remains stable in Sudan's agricultural sectors except for other cereals and other crops where it
1505 increases by 5.7 and 15.1 percent, respectively. Increases in irrigation water use in Sudan are more
1506 prominent for dry hydrological conditions than wet hydrological conditions. The results show
1507 demand for irrigation water remains stable in Egypt's agricultural sectors for all hydrological
1508 conditions. Similarly, irrigation water use remains stable in Ethiopia except for Fruits & vegetables
1509 sector where the demand for water decreases by 3.1 and 0.8 percent for dry and average
1510 hydrological conditions, respectively. Water demand across crops before and after the GERD is
1511 reported in Appendix E.
1512
1513
1514
1515
1516
1517
1518
1519
1520
1521
1522
1523
1524
1525
1526
1527
1528
1529
1530
1531
1532
1533
1534
1535
1536
1537
1538
1539
1540
1541
1542
1543
1544
1545
1546
1547
1548
1549
1550
1551
1552
1553
1554

Table 6. The predicted percentage change in water demand in irrigated agriculture in the Eastern Nile countries due to GERD operation relative to the baseline year 2000 based on GTAP-W

Crops	Dry hydrologic condition			Average hydrologic condition			Wet hydrologic condition		
	Egypt	Ethiopia	Sudan	Egypt	Ethiopia	Sudan	Egypt	Ethiopia	Sudan
Rice	0.0	0.0	19.5	0.0	0.0	3.5	0.0	0.0	0.0
Wheat	0.0	0.0	10.6	0.0	0.0	0.4	0.0	0.0	0.0
Other cereals	0.0	0.0	38.4	0.0	0.0	17.6	0.0	0.0	5.7
Other crops	0.0	-0.1	77.8	0.0	0.0	47.6	0.0	0.0	15.1
Fruits & vegetables	0.0	-3.1	2.9	0.0	-0.8	0.2	0.0	0.0	0.0
Oilseeds	0.0	-0.1	9.8	0.0	0.0	0.4	0.0	0.0	0.0
Sugar cane, Sugar beet	0.0	0.0	9.5	0.0	0.0	0.3	0.0	0.0	0.1

The changes in agricultural output due to GERD derived from the SDDP model and implemented in the CGE model as input variables are expected to influence market prices of crops. The simulation results in Table 7 show agricultural prices remain stable in Egypt and fall in Sudan. During dry hydrological conditions, agricultural prices fall in Sudan's agricultural sectors (3.3-80.9%) except in vegetables and fruits where price increases by 2.9 percent. During average hydrological conditions, agricultural prices in Sudan fall by 1 to 69.6 percent except in wheat and oilseeds where prices remain stable and vegetables and fruits where price increases by 2.3 percent. In the case of wet hydrological conditions, agricultural prices in Sudan decrease in other cereals and other crops (5-39.7%), increase in vegetables and fruits and sugar crops (1-7.8%) and remain more or less stable in other sectors. In Ethiopia, depending on the hydrological condition that may exist in the basin, agricultural prices are expected to rise by 2.1 to 15.5 percent.

Table 7. The predicted percentage change in the price of agricultural products in the Eastern Nile countries due to GERD operation relative to the baseline year 2000 based on GTAP-W

Crops	Dry hydrologic condition			Average hydrologic condition			Wet hydrologic condition		
	Egypt	Ethiopia	Sudan	Egypt	Ethiopia	Sudan	Egypt	Ethiopia	Sudan
Rice	0.0	2.4	-5.3	0.0	2.2	-1.0	0.0	2.1	0.1
Wheat	0.0	5.8	-4.0	0.0	4.5	0.0	0.0	3.7	0.1
Other cereals	0.1	7.6	-80.9	0.0	5.8	-69.6	0.0	4.9	-39.7
Other crops	0.0	4.2	-17.0	0.0	3.1	-12.5	0.0	2.6	-5.0
Fruits & vegetables	0.1	15.5	2.9	0.0	7.8	2.3	0.0	5.2	1.0
Oilseeds	0.0	4.4	-3.3	0.0	3.3	0.1	0.0	2.6	0.1
Sugar cane, Sugar beet	0.1	8.0	-67.3	0.0	5.8	-25.4	0.0	4.7	7.8

Table 8 presents the effect of the GERD on real GDP and real return to unskilled labor. The simulation results demonstrate that the dam results in a higher level of real output and hence positive growth for all the Eastern Nile countries. Although all the Eastern Nile countries experience economic growth due to the GERD, the distribution of benefits favor mainly Ethiopia and to a lesser extent Sudan. Economic growth in Egypt remains more or less stable. The basin-wide gain in real GDP due to the GERD relative to the baseline situation is about USD 2.02 to 2.73 billion. The gain in real GDP is more prominent for dry hydrological conditions (2.73 billion USD) compared to the wet hydrological condition (2.02 billion USD). On average, Ethiopia and Sudan gain USD 2.04 and USD 0.26 billion, respectively. The average gains in real GDP correspond to an economic growth rate of 11.3 and 1.5 percent in Ethiopia and Sudan, respectively compared to the baseline.

The economic growth the Eastern Nile countries experience due to the GERD tends to be pro-poor in the sense that it improves the real return for unskilled labor in these countries. The real return to unskilled labor measures the change in return to unskilled labor relative to the price index of household consumption expenditures and hence reflects trends in poverty reduction. Real return for unskilled labor improves in all the Eastern Nile countries (Table 8). Thus, the GERD is of

significant importance in reducing poverty, mainly in Ethiopia and Sudan and to a lesser extent in Egypt.

Table 8. The predicted effect of GERD operation on real GDP and real return to unskilled labor relative to the baseline year 2000 based on GTAP-W

	Dry hydrologic condition			Average hydrologic condition			Wet hydrologic condition		
	Real GDP		Return to unskilled labour (%)	Real GDP		Return to unskilled labour (%)	Real GDP		Return to unskilled labour (%)
	%	US\$ million		%	US\$ million		%	US\$ million	
Egypt	0.1	86	0.1	~ 0.0	-15	~ 0.0	~ 0.0	25	~ 0.0
Ethiopia	12.2	2,204	9.9	11.3	2,033	8.0	10.4	1,879	6.9
Sudan (pre-2011)	2.3	441	10.3	1.5	277	5.0	0.6	118	1.4
Total		2,731			2,294			2,022	

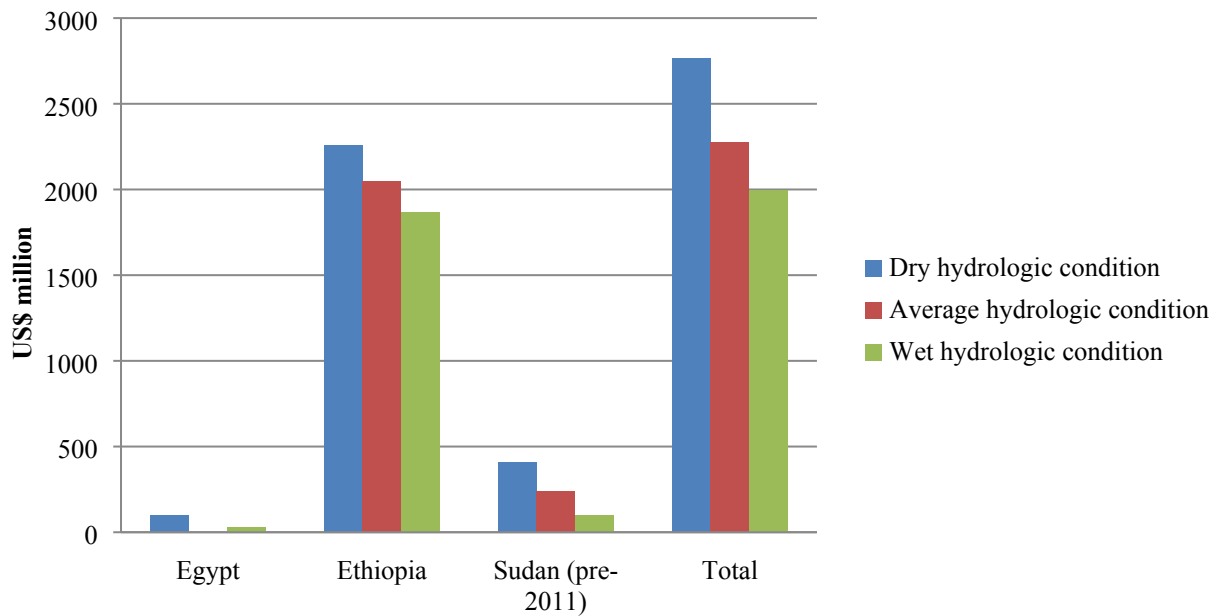
The simulation results for household income and consumption expenditures are depicted in Table 9. The results reveal that Ethiopia, followed by Sudan, enjoys the largest improvement in household income and hence consumption expenditures induced by GERD operation (8.9-13.3% and 9.1-10.7%, respectively). The figures for Sudan stand at 1.2 to 7.7 percent and 0.5 to 2.2 percent, respectively. Household income and consumption expenditure remain stable in Egypt.

Table 9. Predicted percent change in household income and consumption expenditures in the Eastern Nile basin countries relative to the baseline year 2000 based on GTAP-W

	Dry hydrologic condition		Average hydrologic condition		Wet hydrologic condition	
	Household income	Household consumption expenditure	Household income	Household consumption expenditure	Household income	Household consumption expenditure
Egypt	0.1	0.1	~ 0.0	~ 0.0	~ 0.0	~ 0.0
Ethiopia	13.3	10.7	10.5	9.8	8.9	9.1
Sudan (pre-2011)	7.7	2.2	3.8	1.3	1.2	0.5

1723
1724
1725 The overall welfare effects of the GERD, as measured by the equivalent variation (EV), i.e. the
1726 amount of income that would have to be given to an economy before building the dam so as to
1727 leave the economy as well off as it would be after the dam has been built, are substantial (Figure
1728 5). The total welfare gain and its distribution in the Eastern Nile countries due to GERD are more
1729 or less similar to that of real GDP. The results reveal that Egypt's economy is more responsive to
1730 a change in energy supply than water supply. For example, a one percent decline in hydroelectric
1731 supply, on average, results in a US\$116.3 million welfare loss, while a one percent increase in
1732 water supply, on average, results in an almost 10 times smaller welfare gain of US\$12.6 million.
1733 Thus, it appears that Egypt's economy is more constrained by energy supply than water
1734 availability. However, the potential political cost of energy versus water reduction in Egypt
1735 remains an issue that requires due consideration. The results based on a welfare decomposition
1736 analysis (Huff and Hertel, 2000) reveal that the endowment effect (i.e. increase in water stocks
1737 and built infrastructure) and technical change contribute most to the welfare gain in Ethiopia and
1738 Sudan. Welfare gains in Egypt emanate from allocative efficiency, the endowment effect and
1739 technical change.
1740
1741
1742
1743
1744
1745
1746
1747
1748
1749
1750
1751
1752
1753
1754
1755
1756
1757
1758
1759
1760
1761
1762
1763
1764
1765
1766
1767
1768
1769
1770
1771
1772
1773
1774
1775
1776
1777
1778

Figure 5. Expected welfare effects of the GERD in the Eastern Nile countries relative to the baseline year 2000 based on GTAP-W



The results show that the economy of Egypt, measured using multiple indicators including changes in the prices of agricultural products, real GDP, return to unskilled labour, household income, consumptive expenditures and overall welfare, remains stable. Based on these various economic indicators, the results thus indicate that GERD has no adverse negative effect on Egypt.

The SDDP and hence the GTAP-W model results reveal that benefits due to the GERD are more prominent during dry years. Nile flows during wet years stored in the huge GERD reservoir increase water availability downstream during dry years. With limited water storage infrastructure, Sudan located immediately downstream of the GERD benefits the most from GERD water supply during dry years. The impact of GERD is less pronounced during wet years because there is little deficit in water supply in the basin even without the GERD.

4. Discussion and conclusions

This manuscript presents a new modelling framework to assess the regional economic impacts of large hydraulic infrastructure. The proposed framework relies on the coupling of a PE model with a CGE model. The coupling enriches the CGE models and provides policy makers with new information regarding the economic consequences of hydraulic infrastructure that would otherwise be unavailable. The Grand Ethiopian Renaissance Dam on the Blue Nile is used as a case study.

The results of our analysis reveal that the GERD generates substantial economic benefits and enhances economic growth in Ethiopia and Sudan although the distribution of benefits favours mainly Ethiopia. Economic benefits in Egypt improve slightly due to GERD operation during dry hydrological conditions and remain stable during average and wet hydrological conditions. The GERD also generates benefits in terms of lower market prices of agricultural products, increased household income and consumption expenditures. Moreover, the dam improves the real return to unskilled labor and hence contributes to poverty alleviation in the basin.

The substantial economic benefits the GERD generates in Ethiopia mainly emanate from the combined change in the capital stock, domestic saving and immense increase in hydropower supply. The GERD offers Sudan significant economic benefits as it creates regulated flow in the Nile River and as a result ensures increased irrigation water supply. Besides Sudan gains economic benefits from enhanced power generation in its power plants due to reduced sediment load with the GERD operating upstream. The effect of the GERD on Egypt's power supply is found to be limited, it slightly reduces power supply during average hydrological conditions, also because the GERD operation for hydropower generation is a non-consumptive water use and hydropower accounts for a relatively small proportion of the total power supply in the country. Thus, economic growth in Egypt remains more or less stable. Overall, results based on multiple economic

1891 indicators considered in this study reveal that Egypt's economy remains stable, suggesting that
1892
1893 GERD has no negative impact on the country. Egypt's energy-constrained economy would
1894
1895 however benefit substantially if the Eastern Nile countries institute a basin-wide power trade
1896
1897 scheme whereby Egypt imports part of the enormous amount of hydropower generated from the
1898
1899 GERD.
1900
1901
1902
1903
1904

1905 The value-added of the coupled model employed in this study is assessed by comparing the results
1906
1907 of the model to those of two comparable partial equilibrium (PE) models (Arjoon et al., 2014 and
1908
1909 Whittington et al., 2005) and one CGE model (Kahsay et al., 2015). The estimated economic
1910
1911 benefits based on the PE and CGE models are found to be less when evaluated separately compared
1912
1913 to the hybrid coupled model. The coupling of the PE-CGE models allows us to take advantage of
1914
1915 the complementary capabilities of the two models at different levels of detail and at different
1916
1917 spatial scales, and hence provides a more complete and comprehensive assessment of the net
1918
1919 economic benefits involved. At the same time it is important to point out that the PE model is used
1920
1921 for longer term planning purposes to determine the allocation policies throughout the system under
1922
1923 contrasting hydrologic conditions. The ultimate goal of developing and applying the hybrid
1924
1925 coupled model in this study was to assess the hydrologic and economic impacts of a new dam, not
1926
1927 to support the daily operation of the whole water system. The latter would have required more
1928
1929 detailed spatial and temporal data and model simulations. Water allocations to irrigation schemes
1930
1931 may vary in space (irrigation node) and time (year), and our results allow us to determine the
1932
1933 reliability of supply for various development scenarios, which can then be used to analyze the
1934
1935 trade-off between for example irrigation development and the reliability of water supply. Solving
1936
1937 the water resources allocation problem in the Eastern Nile River basin using monthly time steps
1938
1939 (we account for intra-annual variability of hydrologic conditions for crop and hydro production)
1940
1941
1942
1943
1944
1945
1946

1947
1948
1949
1950
1951
1952
1953
1954
1955
1956
1957
1958
1959
1960
1961
1962
1963
1964
1965
1966
1967
1968
1969
1970
1971
1972
1973
1974
1975
1976
1977
1978
1979
1980
1981
1982
1983
1984
1985
1986
1987
1988
1989
1990
1991
1992
1993
1994
1995
1996
1997
1998
1999
2000
2001
2002

is computationally challenging. Working in daily time steps is, to the best of our knowledge, impossible mostly due to the lack of hydro-meteorological data. Simplifications are therefore unavoidable for the longer term planning of hydraulic infrastructure in large-scale water systems.

The overall results of the study are consistent with the findings of previous studies (Strzepek et al., 2008; Aydin, 2010; Kahsay et al., 2018). The findings of the study presented here reveal, like previous studies, that hydropower dams enhance economic growth and improve welfare. Only the findings by Ferrari et al. (2013) seem to indicate that the GERD investment would slow down economic development in Ethiopia, among others due to the risk of ‘Dutch disease’¹. Unlike the study by Ferrari et al. (2013) who conducted a preliminary assessment of the possible economic effects of the GERD on the Ethiopian economy, this study demonstrates a thorough analysis of the basin-wide economic effects of the GERD taking into account the economic interactions between the Eastern Nile countries and the integrative nature of the Blue Nile River basin on which the dam is being built.

The coupled modeling approach applied in this study combines the strengths of partial and general equilibrium models and hence provides a methodological advantage over previous modeling approaches in that water allocation is first optimized in a more realistic bottom-up hydro-economic engineering model and these results are subsequently used to assess the wider direct and indirect impacts of the GERD on the Eastern Nile economies. The coupling of the two modeling approaches increases the credibility of the results on the economy-wide impacts of dams.

¹ Appreciation of the real exchange rate due to increased export of electricity generated from the GERD, leading to a decline in the country’s current exporting sectors by making them less competitive on the export market.

2003
2004
2005
2006
2007
2008
2009
2010
2011
2012
2013
2014
2015
2016
2017
2018
2019
2020
2021
2022
2023
2024
2025
2026
2027
2028
2029
2030
2031
2032
2033
2034
2035
2036
2037
2038
2039
2040
2041
2042
2043
2044
2045
2046
2047
2048
2049
2050
2051
2052
2053
2054
2055
2056
2057
2058

The results of the stochastic PE model employed to design the simulation scenarios for the GTAP-W model are similar, but not identical to those reported in other studies (Goor et al., 2010; Arjoon et al., 2014; Digna et al., 2018). The differences are mainly due to changes to the baseline and input data in the agricultural sector, which were made consistent in this study with the data used for the CGE model based on the IMPACT data. Besides, the SDDP results used in this study, like the stated studies, reveal that irrigation water use increases in Sudan and remains more or less unchanged in Egypt and Ethiopia. As indicated earlier, the PE model was implemented assuming full cooperation among riparian countries. This assumption will be relaxed in future work to assess the direct and indirect benefits of transboundary cooperation in the Eastern Nile River basin using the proposed PE-CGE approach. Our analysis is further more limited in the sense that the CGE model is informed by the PE model, but not (yet) the other way around. The latter would possibly allow us to consider the broader economy-wide impacts of water allocation optimization at water-system scale. Incorporating the feedback of information from the CGE model to the PE model and testing the convergence of the models is deferred to future research.

2059
2060
2061 **References**
2062
2063
2064

- 2065 Arjoon, D., Mohammed, Y., Goor, Q. & Tilmant, A. (2014). Hydro-economic risk assessment in
2066 the eastern Nile River basin. *Water Resources and Economics*, 8:16-31.
2067
2068 Aydin, L. (2010). The Economic and Environmental Impacts of Constructing Hydro Power Plants
2069 in Turkey: A Dynamic CGE Analysis (2004-2020). *Natural Resources*, 1: 69-79.
2070
2071 Basheer, M., Wheeler, K.G., Ribbe, L., Majdalawi, M., Abdo, G. Zagona, E.A., (2018).
2072 Quantifying and evaluating the impacts of cooperation in transboundary river basins
2073 on the Water-Energy-Food nexus: The Blue Nile Basin. *Science of the Total*
2074 *Environment*. 630: 1309–1323.
2075
2076 Beckman, J., Hertel, T., and Tyner, W. (2011). Validating energy-oriented CGE models.
2077 *Energy Economics*, 33: 799-806.
2078
2079 Bekchanov, M., Ringler, C., Bhaduri, A & Jeuland, M. (2015). How would the Rogun Dam affect
2080 water and energy scarcity in Central Asia? *Water International*, 40(5-6): 856-876.
2081
2082 Bielsa, J. and Duarte, R. (2001). An Economic Model for Water Allocation in North Eastern Spain.
2083 *International Journal of Water Resources Development*. 17:3, 397-408, DOI:
2084 10.1080/07900620120065165.
2085
2086 Blackmore, D. and Whittington, D. (2008). Opportunities for Cooperative Water Resources
2087 Development on the Eastern Nile: Risks and Rewards. An Independent Report of the
2088 Scoping Study Team to the Eastern Nile Council of Ministers.
2089
2090 Block, P., Strzepek, K. (2010). Economic Analysis of Large-Scale Upstream River Basin
2091 Development on the Blue Nile in Ethiopia Considering Transient Conditions, Climate
2092 Variability, and Climate Change. *J. Water Resour. Plann. Manage*, 136: 156 – 166.
2093
2094 Brockmeier, M. (2001). A Graphical Exposition of the GTAP Model. GTAP Technical Paper
2095 No. 8 (revised).
2096
2097 Brouwer, R., Hofkes, M. (2008). Integrated hydro-economic modelling: approaches, key issues
2098 and future research directions. *Ecological Economics* 66 (1): 16–22.
2099
2100 Brouwer, R., Hofkes, M. and Linderhof, V. (2008). General equilibrium modelling of the direct
2101 and indirect economic impacts of water quality improvements in the Netherlands at
2102 national and river basin scale. *Ecological Economics*, 66(1): 127-140.
2103
2104 Bureau of Reclamation, US Department of Interior (USBR), Land and Water Resources of the
2105 Blue Nile Basin: Ethiopia, Bureau of Reclamation, US Department of Interior (USBR),
2106 Washington, DC, 1964.
2107
2108
2109
2110
2111
2112
2113
2114

- 2115
2116
2117
2118
2119
2120
2121
2122
2123
2124
2125
2126
2127
2128
2129
2130
2131
2132
2133
2134
2135
2136
2137
2138
2139
2140
2141
2142
2143
2144
2145
2146
2147
2148
2149
2150
2151
2152
2153
2154
2155
2156
2157
2158
2159
2160
2161
2162
2163
2164
2165
2166
2167
2168
2169
2170
- Cai, X., D.C. McKinney, A.M. ASCE, and L.S. Ladson. (2003). Integrated Hydrologic-Agronomic-Economic Model for River Basin management. *Journal of Water Resources Planning and Management*. 129(1): 4-17.
- Calzadilla, A., Rehdanz, K., and Tol, R.S.J. (2010). The economic impact of more sustainable water use in agriculture: A computable general equilibrium analysis. *Journal of Hydrology*, 384: 292-305.
- Calzadilla, A., Rehdanz, K., and Tol, R.S.J. (2011). The GTAP-W model: accounting for water use in agriculture. Working Paper No. 1745. Kiel Institute for the World Economy.
- Dellink, R., Brouwer, R., Linderhof, V. and Stone, K. (2012). Bio-economic modelling of water quality improvements using a dynamic Applied General Equilibrium approach. *Ecological Economics*, 71: 63-79.
- Diao, X., Roe, T., and Doukkali, R. (2005). Economy-wide Gains from Decentralized Water Allocation in a Spatially Heterogeneous Agricultural Economy. *Environment and Development Economics*, 10: 249-269.
- Digna, R.F, Castro-Gama, M.E., van der Zaag, P., Mohamed, A.Y., Corzo, G., and Uhlenbrook, S. (2018). Optimal Operation of the Eastern Nile System Using Genetic Algorithm, and Benefits Distribution of Water Resources Development. *Water*, doi:10.3390/w10070921
- Dinar, A. (2014). Water and economy-wide policy interventions, *Foundations and Trends in Microeconomics*, 10(2): 85–163.
- Dudu, H. and Chumi, S.(2008). Economics of irrigation water management: A literature survey with focus on partial and general equilibrium models, World Bank Policy Research Working Paper 4556, March, 65p.
- EAPP. (2014). EAPP Regional Power System Master Plan, Volume I: Main Report. Addis Ababa, Ethiopia.
- EEPCO. (2013).Ethiopian Power System Expansion Master Plan Study, Volume 3: Generation Planning. Addis Ababa, Ethiopia.
- Ferrari, E., McDonald, S., and Osman, R. (2013). Grand Ethiopian Renaissance Dam: A Global CGE Model to Assess the Economic Effects on the Ethiopian Economy. Paper prepared for the 16th Annual Conference on Global Economic Analysis.
- Gomez, C.M., Tirado, D. and Rey-Maqueira, J. (2004). Water exchanges versus water work: insights from a computable general equilibrium model for the Balearic Islands. *Water Resources Research*, 42, W10520.

- 2171
2172
2173
2174
2175
2176
2177
2178
2179
2180
2181
2182
2183
2184
2185
2186
2187
2188
2189
2190
2191
2192
2193
2194
2195
2196
2197
2198
2199
2200
2201
2202
2203
2204
2205
2206
2207
2208
2209
2210
2211
2212
2213
2214
2215
2216
2217
2218
2219
2220
2221
2222
2223
2224
2225
2226
- Goor, Q., Halleux, C., Mohamed, Y., and Tilmant, A. (2010). Optimal operation of a multipurpose multireservoir system in the Eastern Nile River Basin. *Hydrol. Earth Syst. Sci.*, 14: 1895–1908.
- Harou, J., M. Pulido-Velazquez, D. Rosenberg, J. Medelling-Azuara, J. Lund, and R. Howitt. (2009). Hydro-economic models: Concepts, design, applications, and future prospects, *J. Hydrol.*, 37:627–643.
- Heinz, I., Pulido-Velazquez, M., Lund, J.R., Andreu, J. (2007). Hydro-economic modeling in river basin management: implications and applications for the European water framework directive. *Water Resources Management* 21 (7):1103–1125.
- Hertel, T.W. (1997). *Global Trade Analysis: Modeling and Applications*. Cambridge University Press, Cambridge.
- Huff, K.M. and Hertel, T.W. (2000). Decomposing Welfare Changes in the GTAP Model. GTAP Technical Paper No. 5.
- Jeuland, M. (2010a). Economic implications of climate change for infrastructure planning in transboundary water systems: An example from the Blue Nile. *Water Resources Research*, 46, W11556. Doi:10.1029/2010WR009428.
- Jeuland, M. (2010b). Social Discounting of Large Dams with Climate change Uncertainty. *Water Alternatives*, 3(2): 185-206.
- Jeuland, M., Wu, X., Whittington, D., (2017). Infrastructure development and the economics of cooperation in the Eastern Nile. *Water Int.* (0):1–21 <https://doi.org/10.1080/02508060.2017.1278577>.
- Johansson, R.C. (2005). Micro and macro-level approaches for assessing the value of irrigation water, *World Bank Policy Research Working Paper* 3778, December, 68 p.
- Kahsay, T.N., Kuik, O., Brouwer, R., and van der Zaag, P. (2015). Estimation of the transboundary economic impacts of the Grand Ethiopian Renaissance Dam: A computable general equilibrium analysis. *Water Resources and Economics*, 10:14-30.
- Kahsay, T.N., Kuik, O., Brouwer, R., and van der Zaag, P. (2018). Economic impact assessment of the Grand Ethiopian Renaissance Dam under different climate and hydrological conditions. In *The Grand Ethiopian Renaissance Dam and the Nile Basin: Implications for Transboundary Water Cooperation*. Z. Yihdego, A. Rieu-Clarke and A.E. Cascao (eds.), Routledge.
- Ma, J. Liu, Y., Wang, H., Yan, D.H., Lv, Y.K. & Yang, Z. (2015). Socioeconomic impacts of hydropower development on the Yibin-Chongqing section, upper reaches of the Yangtze River. *Physics and Chemistry of the Earth*, 89-90:73-78.

- 2227
2228
2229 MDI consulting engineers.(2012). The Grand Ethiopian Renaissance Dam Project Report: Initial
2230 Transboundary Environmental Impact Assessment. EEPSCO, Addis Ababa.
2231
2232 MoFED. (2010). Growth and Transformation Plan 2010/11-2014/15. Addis Ababa, Ethiopia.
2233
2234 Robinson, S., Strzepek, K., El-Said, M., and Lofgren, H. (2008). The High Dam at Aswan. In
2235 Bhatia, R., Cestti, R., Scatasta, M. and Malik, R.P.S. (eds.), Indirect Economic Impacts of
2236 Dams: Case Studies from India, Egypt and Brazel. The World Bank.
2237
2238 Rosegrant, M.W., Ringler, C., Msangi, S., Sulser, T.B., Zhu, T., Cline, S.A. (2008). International
2239 Model for Policy Analysis of Agricultural Commodities and Trade (IMPACT): Model
2240 Description. International Food Policy Research Institute, Washington, D.C.
2241
2242 Satti, S., Zaitchik, B., Siddiqui, S., (2015). The question of Sudan: a hydro-economic optimization
2243 model for the Sudanese Blue Nile. *Hydrol. Earth Syst. Sci.* 19:2275–2293.
2244 <https://doi.org/10.5194/hess-19-2275-2015>.
2245
2246 Seung, C.K., Harris, T.R., Englin, J.E., and Netusil, N.R.(2000). Impacts of water reallocation: A
2247 combined computable general equilibrium and recreation demand model approach. *Annals*
2248 *of Regional Science*, 34: 473-487.
2249
2250 Seung, C.K., Harris, T.R., MacDiarmid, T.R., and Shaw, W.D. (1998). Economic impacts of water
2251 reallocation: A CGE analysis for the Walker River Basin of Nevada and California. *Journal*
2252 *of Regional Analysis and Policy*, 28(2): 13-34.
2253
2254 Strzepek, K., Yohe, G.W., Tol, R.S.J., and Rosegrant, M.W. (2008). The value of the high Aswan
2255 Dam to the Egyptian economy. *Ecological Economics*, 66: 117-126.
2256
2257 Tilmant, A., and Kinzelbach, W.(2012). The cost of non-cooperation in international river basins.
2258 *Water Resour. Res.*, 48.
2259
2260 Tilmant, A., Pinte, D., and Goor, Q. (2008). Assessing marginal water values in multipurpose
2261 multireservoir systems via stochastic programming. *Water Resour. Res.*, 44(12),
2262 DOI:10.1029/2008WR007024.
2263
2264 Tractebel Engineering GDF Suez and Coyne et Bellier, Hydrological and Reservoir Simulations
2265 Studies, GERD Project Impounding and Operation Simulations Impact Study on High
2266 Aswan Dam. Unpublished Report Commissioned by the Ethiopian Electric Power
2267 Corporation (EEPSCO), Addis Ababa, 2011.
2268
2269 Whittington, D., Wu, X., and Sadoff, C.(2005). Water resources management in the Nile Basin:
2270 The economic value of cooperation. *Water Policy*, 7: 227-252.
2271
2272 Wittwer, G.(2009). The Economic Impacts of a New Dam in South-East Queensland. *The*
2273 *Australian Economic Review*, 42 (1): 12-23.
2274
2275
2276
2277
2278
2279
2280
2281
2282

Appendix A: Regional aggregation based on the GTAP Africa database

Region	Description
Ethiopia	Ethiopia
Sudan (pre-2011)	Sudan, including South Sudan
Egypt	Egypt
Equatorial Lakes Region	Democratic Republic of Congo (DRC), Uganda, Kenya, United Republic of Tanzania
Rest of North Africa (Rnf)	Morocco, Tunisia, Rest of North Africa
Rest of Sub-Saharan Africa	Cote d'Ivoire, Senegal, Rest of WAEMU, Ghana, Nigeria, Rest of ECOWAS, Cameroon, Rest of CAEMC, Rest of SADC, Rest of COMESA, Botswana, South Africa, Rest of South African CU, Madagascar, Malawi, Mauritius, Mozambique, Zambia, Zimbabwe, Rest of Sub-Saharan Africa
Rest of the World	Oceania, East Asia, Southeast Asia, South Asia, North America, Latin America, European Union 25, Rest of Europe, Middle East,

WAEMU: West African Economic and Monetary Union

ECOWAS: Economic Community of West African States

CAEMC: Central African Economic and Monetary Community

SADC: South African Development Community

COMESA: Common Market for Eastern and Southern Africa

CU: Customs Union

Appendix B: Sectoral aggregation based on the GTAP Africa database

Sector	Description
I. Agricultural Sectors	
Paddy	paddy
Wheat	wheat
Cereal	Cereal grains not elsewhere classified (nec),
Other crops	Plant-based fibers; crops nec; processed rice,
Vegetables and fruits	Vegetables, fruit, nuts
Oilseeds	Oil seeds
Sugar	Sugar cane, sugar beet
Livestock and meat products	Cattle, sheep, goats, horses; animal products nec; raw milk; wool, silk-worm, cocoons; meat: cattle, sheep, goats, horses; meat products nec;
II. Non-agricultural sectors	
Coal	Coal
Crude	Oil
Gas	Gas; gas manufacturing, distribution
Petroleum	Petroleum, coal products
Electricity	Electricity
Processed food	Vegetable oils and fats; dairy products; sugar; food products nec; beverages and tobacco products
Extraction and manufacturing	Forestry; fishing; minerals nec; textiles; wearing apparel; leather products; wood products; paper products, publishing; chemical, rubber, plastic prods; mineral products nec; ferrous metals; metals nec; metal products; motor vehicles and parts; transport equipment nec; electronic equipment; machinery and equipment nec; manufactures nec;
Water	Water

Services	Construction; trade; transport nec; sea transport; air transport; communication; financial services nec; insurance; business services nec; recreation and other services; public administration, defense, health, education; dwellings
----------	--

Explanatory note: nec means 'not elsewhere classified'.

Appendix C: The effect of GERD operation on hydropower generation in Egypt

Hydropower plant	Power generation without GERD (TWh)			Power generation with GERD (TWh)			Change in power generation due to GERD (%)		
	Hydrologic condition			Hydrologic condition			Hydrologic condition		
	Dry	Average	Wet	Dry	Average	Wet	Dry	Average	Wet
HAD	4.5887	7.3426	9.7898	4.4386	6.906	10.182	-3.3	-5.9	4.0
OAD	3.9731	4.4617	4.7838	4.7838	4.7838	4.7838	20.4	7.2	0.0
Esna	0.8028	0.8646	0.88458	0.88458	0.88458	0.88458	10.2	2.3	0.0
Total	9.3646	12.6689	15.45818	10.10698	12.57438	15.85038	7.9	-0.7	2.5

Appendix D: Estimated change in irrigation water allocation (km³) due to GERD based on the SDDP model

Crops	Without GERD									With GERD								
	Dry hydrologic condition			Average hydrologic condition			Wet hydrologic condition			Dry hydrologic condition			Average hydrologic condition			Wet hydrologic condition		
	Egypt	Ethiopia	Sudan	Egypt	Ethiopia	Sudan	Egypt	Ethiopia	Sudan	Egypt	Ethiopia	Sudan	Egypt	Ethiopia	Sudan	Egypt	Ethiopia	Sudan
Rice	13.00	0.00	0.05	13.00	0.00	0.06	13.00	0.00	0.06	13.00	0.00	0.06	13.00	0.00	0.06	13.00	0.00	0.06
Wheat	11.12	0.00	0.71	11.12	0.00	0.78	11.12	0.00	0.79	11.12	0.00	0.79	11.12	0.00	0.79	11.12	0.00	0.79
Other cereals	8.37	0.03	6.43	8.37	0.03	8.00	8.37	0.00	9.52	8.37	0.03	10.13	8.37	0.03	10.36	8.37	0.03	10.39
Other crops	12.79	0.00	0.28	12.79	0.00	0.33	12.79	0.00	0.43	12.79	0.00	0.49	12.79	0.00	0.49	12.79	0.00	0.49
Fruits & vegetables	5.57	0.06	1.13	5.57	0.06	1.20	5.57	0.00	1.20	5.57	0.06	1.16	5.57	0.06	1.20	5.57	0.06	1.20
Oilseeds	0.24	0.01	3.09	0.24	0.01	3.43	0.24	0.00	3.68	0.24	0.01	3.39	0.24	0.01	3.44	0.24	0.01	3.68
Sugar cane, Sugar beet	2.64	0.06	1.29	2.64	0.06	1.63	2.64	0.00	1.67	2.64	0.06	1.55	2.64	0.06	1.67	2.64	0.06	1.67
Total	53.73	0.17	12.97	53.73	0.17	15.44	53.73	0.00	17.35	53.73	0.17	17.57	53.73	0.17	18.01	53.73	0.17	18.29

Appendix E: The predicted change in water demand in irrigated agriculture (km³) in the Eastern Nile countries due to GERD operation relative to the baseline year 2000 based on GTAP-W

Crops	Without GERD									With GERD								
	Dry hydrologic condition			Average hydrologic condition			Wet hydrologic condition			Dry hydrologic condition			Average hydrologic condition			Wet hydrologic condition		
	Egypt	Ethiopia	Sudan	Egypt	Ethiopia	Sudan	Egypt	Ethiopia	Sudan	Egypt	Ethiopia	Sudan	Egypt	Ethiopia	Sudan	Egypt	Ethiopia	Sudan
Rice	13.00	0.00	0.05	13.00	0.00	0.06	13.00	0.00	0.06	13.00	0.00	0.06	13.00	0.00	0.06	13.00	0.00	0.06
Wheat	11.12	0.00	0.71	11.12	0.00	0.78	11.12	0.00	0.79	11.12	0.00	0.78	11.12	0.00	0.79	11.12	0.00	0.79
Other cereals	8.37	0.03	6.43	8.37	0.03	8.00	8.37	0.03	9.52	8.37	0.03	8.79	8.37	0.03	9.40	8.37	0.03	10.06
Other crops	12.79	0.00	0.28	12.79	0.00	0.33	12.79	0.00	0.43	12.79	0.00	0.49	12.79	0.00	0.49	12.79	0.00	0.49
Fruits & vegetables	5.57	0.06	1.13	5.57	0.06	1.20	5.57	0.06	1.20	5.57	0.06	1.16	5.57	0.06	1.20	5.57	0.06	1.20
Oilseeds	0.24	0.01	3.09	0.24	0.01	3.43	0.24	0.01	3.68	0.24	0.01	3.40	0.24	0.01	3.45	0.24	0.01	3.69
Sugar cane, Sugar beet	2.64	0.06	1.29	2.64	0.06	1.63	2.64	0.06	1.67	2.64	0.06	1.41	2.64	0.06	1.64	2.64	0.06	1.67
Total	53.73	0.17	12.97	53.73	0.17	15.44	53.73	0.17	17.35	53.73	0.17	16.08	53.73	0.17	17.03	53.73	0.17	17.96