

Near-field of an experimental turbidity current triggered by an impinging water jet – a preliminary assessment

Buffon, P.; Uijttewaal, W.S.J.; Franca, M.J.; Valero Huerta, Daniel

Publication date

2022

Document Version

Final published version

Published in

Anthropogenic Rivers: Book of Abstracts NCR DAYS 2022 13-14 April | TU Delft

Citation (APA)

Buffon, P., Uijttewaal, W. S. J., Franca, M. J., & Valero Huerta, D. (2022). Near-field of an experimental turbidity current triggered by an impinging water jet – a preliminary assessment. In A. Blom, L. M. Stancanelli, J. A. Dercksen, C. Ylla Arbós, M. K. Chowdhury, S. M. Ahrendt, C. Piccoli, R. M. J. Schielen, K. Sloff, & J. H. Slinger (Eds.), *Anthropogenic Rivers: Book of Abstracts NCR DAYS 2022 13-14 April | TU Delft* (pp. 80-81). (NCR Publication; No. 49-2022).

Important note

To cite this publication, please use the final published version (if applicable). Please check the document version above.

Copyright

Other than for strictly personal use, it is not permitted to download, forward or distribute the text or part of it, without the consent of the author(s) and/or copyright holder(s), unless the work is under an open content license such as Creative Commons.

Takedown policy

Please contact us and provide details if you believe this document breaches copyrights. We will remove access to the work immediately and investigate your claim.

Anthropogenic Rivers

Book of Abstracts

NCR DAYS 2022

13-14 April | TU Delft



*Astrid Blom, Laura M. Stancanelli, Jelle A. Dercksen, Clàudia Ylla Arbós,
M. Kifayath Chowdhury, Shelby M. Ahrendt, Carolina Piccoli,
Ralph M.J. Schielen, Kees Sloff & Jill H. Slinger (eds.)*

NCR Publication: 49-2022

Netherlands
Centre for
River studies **NCR**

Near-field of an experimental turbidity current triggered by an impinging water jet – a preliminary assessment

Patricia Buffon^{a*}, Wim Uijttewaala^a, Mário J. Franca^b, Daniel Valero^b

^a TU Delft, Department of Hydraulic Engineering, Stevinweg 1, 2628 CN, Delft, the Netherlands

^b Karlsruhe Institute of Technology (KIT), Engesserstraße 22, 76131 Karlsruhe, Germany

Keywords — physical modelling, water injection dredging, sediment management

Introduction

The construction of dams in rivers impacts the environment at small to large temporal and spatial scales, and the impacts caused by the changes in sediment fluxes are a major concern. Although efforts have been made to develop more sustainable sediment management techniques, their poor predictability often hinders effective application. With this research, we aim at quantifying key sediment and hydrodynamic processes of an idealized and reduced-scale version of the water injection dredging technique, which can be applied to sustain sediment bypassing through dams. The application of this technique consists of (Winterwerp et al 2002) a) water injection into the bed, typically by a moving boat equipped with a jet array; b) mobilization and suspension of sediment from the bed; c) formation of a turbidity current that can transport sediment to distal areas by natural means. The processes involved in the application of this technique are commonly divided into spatial units, here defined as: injection and impact zone (position A, Figure 1), near-field (position B, Figure 1), and far-field (positions C, D, and E, Figure 1). Within a framework to link the momentum and sediment fluxes between two of these areas, injection and near-field (e. g. Sequeiros et al 2009), the first preliminary results on the near-field characterization of a laboratory experiment are here presented.

Methodology

The experimental setup (Figure 1) consists of a 4 m long, 2 m deep, and 22 cm wide flume; a hydrodynamic diffuser device exiting in a rectangular shape 3 cm high and 20 cm wide, approximately reproducing 2D jet boundary

conditions; and a one meter deep deposit ($\rho_{\text{bulk}} \sim 737 \text{ kg/m}^3$, i.e. 737 kg of sediment per m^3 of deposit) built with lightweight sediment ($\rho_{\text{sediment}} = 1581 \text{ kg/m}^3$; $D_{50} = 0.222 \text{ mm}^1$) and constant slope ($\alpha = 0^\circ$). To measure velocity and concentration profiles, four Ultrasonic Velocity Profilers (UVPs), one Acoustic Doppler velocimetry (ADV), and two Conductivity Concentration Meters (CCMs) were placed at four longitudinal locations. For the experiment presented in this piece of work, the jet boundary conditions were: discharge = 3 l/s and impinging angle = 45° .

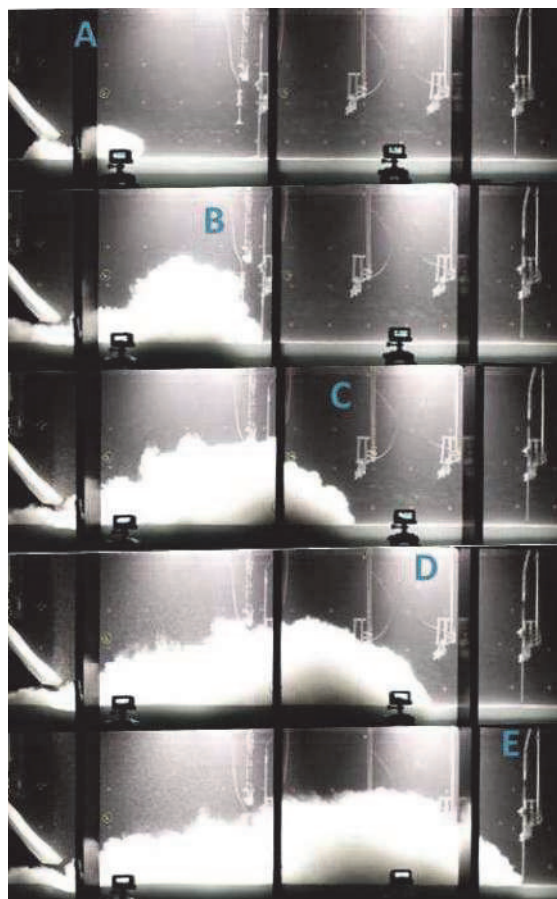


Figure 1. Snapshots of the experimental setup instants after the experiment started (A), and after approximately 5 (B), 10 (C), 15 (D) and 20 (E) seconds after the first snapshot.

* Corresponding author

Email address: p.buffon@tudelft.nl (Patricia Buffon)

¹ Approximately, 4% of the grain sizes are between 0.150 - 0.180 mm, 76% between 0.180 - 0.250 mm, and 19% between 0.250 - 0.300 mm.

Preliminary results

In Figure 1, the development of the turbidity current after the jet impingement is shown in a sequence of snapshots (A to E). Downstream the near-field, the head of the turbidity current travelled with a velocity of ~ 8.5 cm/s. The impact zone at approximately the instant when the snapshot E was taken is shown in greater detail in Figure 2. Roughly, an erosion rate of 40 g/s (across the width of the flume) at the impact zone, triggered a turbidity current with a mean velocity profile at the near-field as shown in Figure 3.

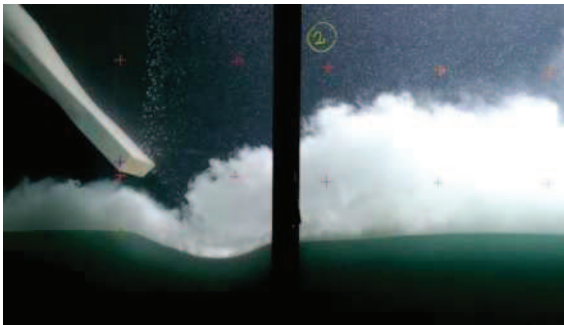


Figure 2. Scour result after approximately 23 seconds from the start of the experiment (snapshot E, Figure 1).

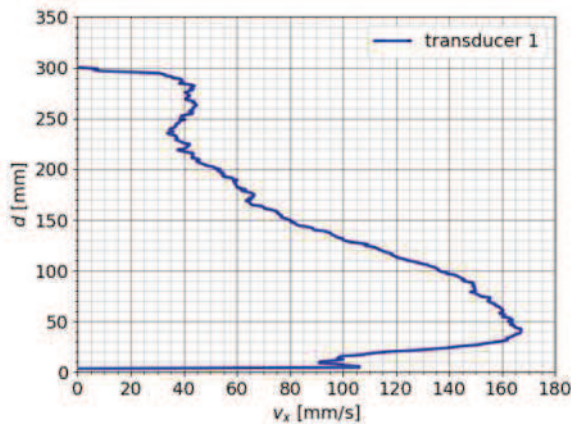


Figure 3. Mean velocity profile at position B (Figure 1). The velocities were averaged from $t \sim 7$ s (snapshot B, Figure 1) to $t \sim 23$ s (snapshot E, Figure 1) from the start of the experiment.

Current and future work

Current and future research aim to characterize the near-field turbidity currents triggered in various initial (bed slope) and boundary conditions (jet discharge and impinging angle) and to link these near-fields with the injection characteristics.

Acknowledgments

CAPES (Coordenação de Aperfeiçoamento de Pessoal de Nível Superior, Brazil).

References

Winterwerp, J. C.; Wang, Z. B.; van Kester, J. A. Th. M. and Verweij, J. F. 2002. Far-field impact of water injection

dredging in the Crouch River. Proceedings of the Institution of Civil Engineers - Water and Maritime Engineering 2002 154:4, 285-296. <https://doi.org/10.1680/wame.2002.154.4.285>

Sequeiros, O. E., Cantero, M. I. and Garcia, M. H. 2009. Sediment management by jets and turbidity currents with application to a reservoir for flood and pollution control in Chicago IL. J. Hydraulic Res., 47(3): 340–348. <https://doi.org/10.1080/00221686.2009.9522005>