

Structural, physiological and regulatory analysis of maltose transporter genes in *Saccharomyces eubayanus* CBS 12357[†]

Brickwedde, Anja; Brouwers, Nick; van den Broek, Marcel; Gallego Murillo, J.S.; Fraiture, Julie L.; Pronk, Jack T.; Daran, Jean Marc G.

DOI

[10.3389/fmicb.2018.01786](https://doi.org/10.3389/fmicb.2018.01786)

Publication date

2018

Document Version

Final published version

Published in

Frontiers in Microbiology

Citation (APA)

Brickwedde, A., Brouwers, N., van den Broek, M., Gallego Murillo, J. S., Fraiture, J. L., Pronk, J. T., & Daran, J. M. G. (2018). Structural, physiological and regulatory analysis of maltose transporter genes in *Saccharomyces eubayanus* CBS 12357[†]. *Frontiers in Microbiology*, 9(AUG), Article 1786. <https://doi.org/10.3389/fmicb.2018.01786>

Important note

To cite this publication, please use the final published version (if applicable).
Please check the document version above.

Copyright

Other than for strictly personal use, it is not permitted to download, forward or distribute the text or part of it, without the consent of the author(s) and/or copyright holder(s), unless the work is under an open content license such as Creative Commons.

Takedown policy

Please contact us and provide details if you believe this document breaches copyrights.
We will remove access to the work immediately and investigate your claim.



Structural, Physiological and Regulatory Analysis of Maltose Transporter Genes in *Saccharomyces eubayanus* CBS 12357^T

Anja Brickwedde[†], Nick Brouwers[†], Marcel van den Broek, Joan S. Gallego Murillo, Julie L. Fraiture, Jack T. Pronk and Jean-Marc G. Daran^{*}

Department of Biotechnology, Delft University of Technology, Delft, Netherlands

OPEN ACCESS

Edited by:

Vittorio Capozzi,
University of Foggia, Italy

Reviewed by:

Diego Libkind,
CONICET Instituto Andino Patagónico
en Tecnologías Biológicas y
Geoambientales (IPATEC), Argentina
EmilyClare P. Baker,
University of Wisconsin-Madison,
United States

*Correspondence:

Jean-Marc G. Daran
j.g.daran@tudelft.nl

[†]These authors have contributed
equally to this work

Specialty section:

This article was submitted to
Food Microbiology,
a section of the journal
Frontiers in Microbiology

Received: 12 May 2018

Accepted: 17 July 2018

Published: 10 August 2018

Citation:

Brickwedde A, Brouwers N, van den
Broek M, Gallego Murillo JS, Fraiture
JL, Pronk JT and Daran J-MG (2018)
Structural, Physiological and
Regulatory Analysis of Maltose
Transporter Genes in *Saccharomyces*
eubayanus CBS 12357^T.
Front. Microbiol. 9:1786.
doi: 10.3389/fmicb.2018.01786

Saccharomyces pastorianus lager brewing yeasts are domesticated hybrids of *Saccharomyces cerevisiae* and cold-tolerant *Saccharomyces eubayanus*. To understand the contribution of both parental genomes to maltose metabolism in brewing wort, this study focuses on maltose transport in the *S. eubayanus* type strain CBS 12357^T/FM1318. To obtain complete sequences of the *MAL* loci of this strain, a near-complete genome assembly was generated using the Oxford Nanopore Technology MinION sequencing platform. Except for *CHRXII*, all sixteen chromosomes were assembled as single contigs. Four loci harboring putative maltose transporter genes (*SeMALT1-4*), located in subtelomeric regions of *CHRII*, *CHRV*, *CHRXIII*, and *CHRXVI*, were completely resolved. The near-identical loci on *CHRV* and *CHRXVI* strongly resembled canonical *S. cerevisiae* *MAL* loci, while those on *CHRII* and *CHRXIII* showed different structures suggestive of gene loss. Overexpression of *SeMALT1-4* in a maltose-transport-deficient *S. cerevisiae* strain restored growth on maltose, but not on maltotriose, indicating maltose-specific transport functionality of all four transporters. Simultaneous CRISPR-Cas9-assisted deletion of only *SeMALT2* and *SeMALT4*, which shared 99.7% sequence identity, eliminated growth of *S. eubayanus* CBS 12357^T on maltose. Transcriptome analysis of *S. eubayanus* CBS 12357^T established that *SeMALT1* and *SeMALT3*, are poorly expressed in maltose-grown cultures, while *SeMALT2* and *SeMALT4* were expressed at much higher levels than *SeMALT1* and *SeMALT3*, indicating that only *SeMALT2/4* are responsible for maltose consumption in CBS 12357^T. These results represent a first genomic and physiological characterization of maltose transport in *S. eubayanus* CBS 12357^T and provides a valuable resource for further industrial exploitation of this yeast.

Keywords: yeast, brewing, domestication, gene regulation, wort, transport, *Saccharomyces eubayanus*

INTRODUCTION

Saccharomyces eubayanus was first isolated from Nothofagus trees and stromata of *Cyttaria hariatii* in North-Western Patagonia (Libkind et al., 2011). Strains of *S. eubayanus* have subsequently been also isolated from locations in North America (Peris et al., 2014), Asia (Bing et al., 2014), and Oceania (Gayevskiy and Goddard, 2016). Initial physiological characterization of the Patagonian

S. eubayanus strain CBS 12357^T revealed that it grows faster than *S. cerevisiae* at temperatures below 10°C (Hebly et al., 2015), shows poor flocculation (Krogerus et al., 2015), and consumes maltose but not maltotriose (Hebly et al., 2015; Gibson et al., 2017).

Isolation and characterization of *S. eubayanus* provided a strong impetus for research on *S. pastorianus* lager brewing yeasts. The hybrid nature of lager yeast genomes was already shown by Southern hybridization (Tamai et al., 1998; Yamagishi et al., 1999); RFLP genotyping, Sanger sequencing (Casaregola et al., 2001; Rainieri et al., 2006), and comparative proteomics (Joubert et al., 2000; Caesar et al., 2007). However, release of the first *S. eubayanus* genome sequence (Libkind et al., 2011) unequivocally established that this cold-tolerant *Saccharomyces* species contributed the non-*cerevisiae* part of *S. pastorianus* genomes (Nakao et al., 2009; Hewitt et al., 2014; Walther et al., 2014; van den Broek et al., 2015). Access to this genome sequence and its updates (Baker et al., 2015; Hebly et al., 2015) proved invaluable for resolving the complex structure of aneuploid *S. pastorianus* genomes. Moreover, access to *S. eubayanus* strains stimulated vigorous research into *de novo* generation of hybrids between *S. cerevisiae* and *S. eubayanus* in the laboratory (Steensels et al., 2014; Hebly et al., 2015; Krogerus et al., 2015, 2017a; Magalhães et al., 2017). This approach has the potential to increase our understanding of the domestication process of lager brewing strains and, moreover, to strongly increase the genetic and phenotypic variety of lager yeast strains available to the brewing industry. *De novo* constructed *S. cerevisiae* × *S. eubayanus* hybrids have been demonstrated to combine advantageous brewing-related properties of both parents (cryotolerance, maltotriose utilization, and strong flocculation) and even exhibited best parent heterosis also referred to as hybrid vigor (Steensels et al., 2014; Hebly et al., 2015; Krogerus et al., 2017a,b; Peris et al., 2017). However, generation of new hybrids is, by itself, not sufficient to understand the genetic basis for the exceptional performance of *S. pastorianus* under brewing conditions.

Lager brewing strains of *S. pastorianus* have, over several centuries, been selected for rapid, near-complete fermentation of all-malt brewer's wort fermentable sugars, which typically comprise 60% maltose, 25% maltotriose, and 15% glucose, with trace amounts of fructose (Zastrow et al., 2001). Lager brewing therefore critically depends on the capacity of *S. pastorianus* strains to efficiently take up and ferment the wort α-glucosides maltose and maltotriose. The required maltose fermentation characteristics of *S. pastorianus* strains are conferred by genes originating from each of the parents and from a set that likely arose during its domestication history (e.g., *MTT1*) (Chow et al., 1989; Dietvorst et al., 2005; Salema-Oom et al., 2005; Vidgren et al., 2005; Alves et al., 2008; Vidgren and Londesborough, 2012; Cousseau et al., 2013; Magalhães et al., 2016).

In *S. cerevisiae*, maltose metabolism and the responsible *MAL* genes are well characterized in term of sequence, genetics, regulation and biochemistry. *S. cerevisiae* *MAL* loci harbor the three key genes essential for maltose utilization, encoding a transcriptional activator (*MALx3*), a maltose permease (*MALx1*) and a maltase (*MAx2*) (Charron et al., 1989). Numbers and

identities of *MAL* loci are highly strain dependent, with up to five *MAL* loci (*MAL1*, 2, 3, 4, and 6) occurring in haploid *S. cerevisiae* genomes. *MAL* loci are typically located in subtelomeric regions, with the structurally identical *MAL1*, 2, 3, 4, and 6 located near telomeres of CHRVII, III, II, XI, and VIII, respectively (Cohen et al., 1985; Dubin et al., 1985; Charron et al., 1989; Chow et al., 1989; Michels et al., 1992; Han et al., 1995; Day et al., 2002b).

Maltose is transported across the *S. cerevisiae* plasma membrane by maltose-proton symport, mediated by *Malx1* transporters (Serrano, 1977; van Leeuwen et al., 1992) and, to a lesser extent, by facilitated diffusion (Day et al., 2002a). All *MALx1* genes are highly similar, with the exception of *MAL11* and its allele *AGT1*, whose DNA sequence shows only 57% identity to the other four *MALx1* transporter genes (Han et al., 1995; Vidgren et al., 2009). This sequence difference is accompanied by a difference in substrate range, with *Agt1* also being able to transport other α-glucosides, such as trehalose (Plourde-Owobi et al., 1999), sucrose (Basso et al., 2011; Marques et al., 2017) and, importantly for brewing applications, maltotriose (Alves et al., 2008; Vidgren et al., 2009). The *S. cerevisiae* genome harbors two additional maltose permease genes, *MPH2* and *MPH3*, which are located subtelomerically on CHRV and X, respectively. Although the transport mechanisms of *Mph2* and *Mph3* have not been experimentally established, both carriers were shown to transport a range of substrates including glucose, maltose, maltotriose, α-methylglucoside, and turanose (Day et al., 2002a).

In contrast to the wealth of information on *S. cerevisiae*, knowledge on maltose transport in *S. eubayanus* is limited. The type strain *S. eubayanus* CBS 12357^T grows on maltose, but not on maltotriose (Hebly et al., 2015). Annotation of its genome sequence revealed four open reading frames sharing similarity with *S. cerevisiae* *MAL31* (*SeMALT1*; *SeMALT2*, *SeMALT3*, and *SeMALT4*) (Baker et al., 2015). The hybrid *S. pastorianus* genome harbors two additional maltose transporter gene variants that were not found in either of the reference parental genomes. The first of these, *MTT1/MTY1*, shares 90 and 54% DNA sequence identity with *S. cerevisiae* *MAL31* and *MAL11*, respectively (Dietvorst et al., 2005; Salema-Oom et al., 2005). The second *S. pastorianus*-specific maltose-transporter gene, *SeAGT1*, shared significant identity with *S. cerevisiae* *AGT1* (85% *ScAGT1*; Vidgren and Londesborough, 2012). *SeAGT1* was unexpectedly found to be located on the *S. eubayanus*-derived CHRVIII-XV, suggesting a *S. eubayanus* origin, despite the absence of similar genes in currently available *S. eubayanus* genome sequences (Nakao et al., 2009; van den Broek et al., 2015). However, genome assembly of an Asian *S. eubayanus* strain (CDFM21L.1; Bing et al., 2014) revealed short (<200 bp) sequences reminiscent of a putative *SeAGT1* gene (Hebly et al., 2015). Both *MTT1/MTY1* and *SeAGT1* were shown to confer low-temperature dependent transport of both maltose and maltotriose (Vidgren et al., 2014). To illustrate the complexity of α-glucoside transport in *S. pastorianus*, the model strain Weihenstephan 34/70 contains all *S. cerevisiae* *MAL* loci except for *MAL2*, a single *MPH* gene (*MPH2*), as well as all four *S. eubayanus* genes (*MAL1* to 4) (Nakao et al., 2009; van den Broek et al., 2015) and the two *S. pastorianus*-specific genes

MTT1 and *SeAGT1* (Magalhães et al., 2016). In this *S. pastorianus* background, the *S. cerevisiae* allele of *AGT1* (*MAL11*) carries a nonsense mutation (Vidgren et al., 2009).

Hitherto, no study has systematically investigated the functionality of the individual α -glucoside transporters in *S. pastorianus*. In addition to the complexity of maltose metabolism in *S. pastorianus* strains, genetic analysis is complicated by the limited genetic accessibility of industrial lager brewing yeasts (Bolat et al., 2013). However, availability of the *S. eubayanus* type strain and of its genome sequence offers an alternative approach to fill existing knowledge gaps on transport of wort sugars. The aim of this study was therefore to investigate the contribution of individual putative maltose-transporter (*SeMALT*) genes in *S. eubayanus* CBS 12357^T. To this end, a new near-complete genome sequence of the strain CBS 12357^T was assembled using Oxford Nanopore Technology's MinION long-read sequencing platform. Subsequently, CRISPR-Cas9 gene editing was used to systematically delete the *MALT* genes in *S. eubayanus*. In a complementary approach, all four *S. eubayanus* *MALT* open reading frames were cloned and constitutively expressed alongside the *S. cerevisiae* *MAL12* maltase gene in a *S. cerevisiae* strain lacking all maltose utilization genes (*MALx1*, *MALx2*, and *MALx3*), *MPH1/2*, *SUC2*, and *IMA1-5* genes; (Marques et al., 2018). Subsequently, growth of the genetically modified yeast strains was analyzed on different carbon sources. Finally, RNA sequencing was performed on glucose- and maltose-grown cultures to study differential expression of the *S. eubayanus* *MALT* genes.

MATERIALS AND METHODS

Strains and Maintenance

S. eubayanus strain CBS 12357^T (alias FM1318, Libkind et al., 2011) was obtained from the Westerdijk Fungal Biodiversity Institute (Utrecht, the Netherlands, <http://www.westerdijkinstitute.nl/>). The *S. cerevisiae* strain IMZ616 (Marques et al., 2018) was derived from the CEN.PK lineage (Entian and Kötter, 2007; Salazar et al., 2017). All strains used in this study are listed in **Table 1**. Stock cultures of *S. eubayanus* and *S. cerevisiae* strains were grown in YPD (10 g L⁻¹ yeast extract, 20 g L⁻¹ peptone, and 20 g L⁻¹ glucose) until late exponential phase, complemented with sterile glycerol to a final concentration of 30% (v/v) and stored at -80°C as 1.5 ml aliquots until further use.

Media and Cultivation

S. eubayanus batch cultures were grown on synthetic medium (SM) containing 3.0 g L⁻¹ KH₂PO₄, 5.0 g L⁻¹ (NH₄)₂SO₄, 0.5 g L⁻¹ MgSO₄, 7 H₂O, 1 mL L⁻¹ trace element solution, and 1 mL L⁻¹ vitamin solution (Verduyn et al., 1992). The pH was set to 6 with 2 M KOH prior to autoclaving at 120°C for 20 min. Vitamin solutions (Verduyn et al., 1992) were sterilized by filtration and added to the sterile medium. Concentrated sugar solutions were autoclaved at 110°C for 20 min and added to the sterile flasks to give a final concentration of 20 g L⁻¹ carbon source [glucose (SMG), maltose (SMM) or maltotriose (SMMt)]. *S. cerevisiae* batch cultures were grown on SM supplemented with 150 mg

L⁻¹ uracil to compensate for loss of plasmid pUDC156 that carried the *cas9* endonuclease gene, and supplemented with 20 g L⁻¹ carbon source [glucose (SM_uG), maltose (SM_uM) or maltotriose (SM_uMt)]. All batch cultures were grown in 500 mL shake flasks with a working volume of 100 mL. The cultures were inoculated at an initial OD_{660nm} of 0.1 and incubated under an air atmosphere and shaken at 200 rpm and at 20°C in a New BrunswickTM Innova44 incubator (Eppendorf Nederland B.V, Nijmegen, The Netherlands).

Selection of the *S. eubayanus* strains transformed with plasmids pUDP062 (gRNA_{SeMALT1}), pUDP063 (gRNA_{SeMALT2}), and pUDP064 (gRNA_{SeMALT3}) was carried out on a modified SMG medium, in which (NH₄)₂SO₄ was replaced by 5 g L⁻¹ K₂SO₄ and 10 mM acetamide (SM_{Acc}G) (Solis-Escalante et al., 2013). SM- based solid medium contained 2% Bacto Agar (BD, Franklin Lakes, NJ). Selection of *S. cerevisiae* integration strains was carried out on SM_{Acc}G. For plasmid propagation, *E. coli* XL1-Blue-derived strains (Agilent Technologies, Santa Clara, CA) were grown in Lysogeny Broth medium (LB, 10 g L⁻¹ tryptone, 5 g L⁻¹ yeast extract, 5 g L⁻¹ NaCl) supplied with 100 mg L⁻¹ ampicillin.

Plasmid and Strain Construction

Plasmid Construction

Guide-RNA (gRNA) sequences for deletion of *SeMALT1*, *SeMALT2/T4* and *SeMALT3* were designed following the guiding principles recommended in Gorter de Vries et al. (2017). The DNA sequences encoding these gRNAs were synthesized at GeneArt (Thermo Fisher Scientific, Waltham, MA) and were delivered in pUD631, pUD632, and pUD633 respectively (**Table 2**). The gRNA spacer sequences (*SeMALT1* 5'-ATTCCAAACGACAATAAAGA3', *SeMALT2/T4* 5'-TACAGGAGAATGGGAGATTT-3' and *SeMALT3* 5'-GTTTTCAAAGCTTGCAGAAG-3') and the structural gRNA sequence were flanked at their 5' ends by the Hammerhead ribozyme (HH) and at their 3' ends by the Hepatitis Delta Virus ribozyme (HDV) (Gao and Zhao, 2014). The HH-gRNA-HDV fragment was flanked on both ends with a BsaI site for further cloning (Gorter de Vries et al., 2017; Jurgens et al., 2018). In the next step, the gRNAs were transferred into the pUDP004 plasmid (Gorter de Vries et al., 2017), which enables combined expression of the gRNA cassette and of *Spcas9*^{D147YP411T} (Bao et al., 2015). The plasmid pUDP062, expressing gRNA_{SeMALT1} was constructed in a one-pot reaction by digesting pUDP004 and pUD631 using BsaI and ligating with T4 ligase. Similarly, pUDP063, expressing gRNA_{SeMALT2/T4} and *Spcas9*^{D147YP411T} was assembled from pUDP004 and pUD632. The plasmid pUDP064 expressing gRNA_{SeMALT3} and *Spcas9*^{D147YP411T} was assembled from pUDP004 and pUD633. Correct assembly of pUDP062-064 was verified by restriction analysis with SspI and PmlI.

The coding regions of *SeMALT1*, *SeMALT2* and *SeMALT3* were amplified from CBS 12357^T genomic DNA with Phusion High-Fidelity DNA polymerase (ThermoFisher Scientific), according to the supplier's instructions with primers pairs 10491/10492, 10632/10633, and 10671/10672 (**Table S5**), respectively. The coding sequence of *ScAGT1* was amplified from CEN.PK113-7D genomic DNA with Phusion High-Fidelity DNA

TABLE 1 | Strains used in this study.

Strain	Genotype	Species	References
CBS 12357 ^T /FM1318	<i>MATa/MATα SeMALT1/SeMALT1 SeMALT2/SeMALT2 SeMALT3/SeMALT3 SeMALT4/SeMALT4</i>	Se ^a	Libkind et al., 2011
IMK816	<i>MATa/MATα Semalt1Δ/Semalt1Δ SeMALT2/SeMALT2 SeMALT3/SeMALT3 SeMALT4/SeMALT4</i>	Se	This study
IMK817	<i>MATa/MATα SeMALT1/SeMALT1 Semalt2Δ/Semalt2Δ SeMALT3/SeMALT3 Semalt4Δ/Semalt4Δ</i>	Se	This study
IMK818	<i>MATa/MATα SeMALT1/SeMALT1 SeMALT2/SeMALT2 Semalt3Δ/Semalt3Δ SeMALT4/SeMALT4</i>	Se	This study
IMZ616	<i>MATa ura3-52 HIS3 LEU2 TRP1 mal1Δ::loxP mal2Δ::loxP mal3Δ::loxP mph2Δ::loxP mph3Δ::loxP suc2Δ::loxP-KanMX-loxP ima1Δ ima2Δ ima3Δ ima4Δ ima5Δ pUDC156 (Spcas9 URA3 ARS4 CEN6)</i>	Sc ^b	Marques et al., 2018
IMX1253	<i>MATa ura3-52 HIS3 LEU2 TRP1 mal1Δ::loxP mal2Δ::loxP mal3Δ::loxP mph2Δ::loxP mph3Δ::loxP suc2Δ::loxP-KanMX-loxP ima1Δ ima2Δ ima3Δ ima4Δ ima5Δ sga1Δ::ScTEF1_{pr}-SeMALT1-ScCYC1_{ter}::ScTDH3_{pr}-ScMAL12- ScADH1_{ter} pUDC156 (Spcas9 URA3 ARS4 CEN6)</i>	Sc	This study
IMX1254	<i>MATa ura3-52 HIS3 LEU2 TRP1 mal1Δ::loxP mal2Δ::loxP mal3Δ::loxP mph2Δ::loxP mph3Δ::loxP suc2Δ::loxP-KanMX-loxP ima1Δ ima2Δ ima3Δ ima4Δ ima5Δ sga1Δ::ScTEF1_{pr}-SeMALT2-ScCYC1_{ter}::ScTDH3_{pr}-ScMAL12- ScADH1_{ter} pUDC156 (Spcas9 URA3 ARS4 CEN6)</i>	Sc	This study
IMX1255	<i>MATa ura3-52 HIS3 LEU2 TRP1 mal1Δ::loxP mal2Δ::loxP mal3Δ::loxP mph2Δ::loxP mph3Δ::loxP suc2Δ::loxP-KanMX-loxP ima1Δ ima2Δ ima3Δ ima4Δ ima5Δ sga1Δ::ScTEF1_{pr}-SeMALT3-ScCYC1_{ter}::ScTDH3_{pr}-ScMAL12- ScADH1_{ter} pUDC156 (Spcas9 URA3 ARS4 CEN6)</i>	Sc	This study
IMX1365	<i>MATa ura3-52 HIS3 LEU2 TRP1 mal1Δ::loxP mal2Δ::loxP mal3Δ::loxP mph2Δ::loxP mph3Δ::loxP suc2Δ::loxP-KanMX-loxP ima1Δ ima2Δ ima3Δ ima4Δ ima5Δ sga1Δ::ScTEF1_{pr}-ScAGT1-ScCYC1_{ter}::ScTDH3_{pr}-ScMAL12- ScADH1_{ter} pUDC156 (Spcas9 URA3 ARS4 CEN6)</i>	Sc	This study

^a*S. eubayanus*.^b*S. cerevisiae*.

polymerase (ThermoFisher Scientific), according to the supplier's instructions with primers pairs 9940/9941. Each primer carried a 40 bp extension complementary to the plasmid backbone of p426-TEF-amdS (Solis-Escalante et al., 2013; Marques et al., 2018), which was PCR amplified using Phusion High-Fidelity DNA polymerase (ThermoFisher Scientific) and primers 7812 and 5921 (**Table S5**). p426-TEF-amdS is an expression plasmid that harbors the promoter of the translational elongation factor EF-1 alpha (*TEF1*) of *S. cerevisiae*. Each *SeMALT* fragment was assembled with the p426-TEF-amdS backbone fragment using NEBuilder HiFi DNA Assembly (New England Biolabs, Ipswich, MA), resulting in plasmids pUD479 (*SeMALT1*), pUD480 (*SeMALT2/T4*), pUD481 (*SeMALT3*), and pUD445 (*ScAGT1*) (**Table 2**).

Strains Construction

S. eubayanus IMK816 (*Semalt1Δ*) was constructed by transforming CBS 12357^T by electroporation (Gorter de Vries et al., 2017) with 200 ng of pUDP062 and 1 μg of 120 bp repair fragment obtained by mixing an equimolar amount of primers 11850 and 11851 (**Table S5**) (Mans et al., 2015) (**Figure 1**). As control, the same transformation was performed without including the repair DNA fragment. Transformants were selected on SM_{Acc}G plates. Strain IMK817 (*Semalt2Δ* *Semalt4Δ*) and IMK818 (*Semalt3Δ*) were constructed in

the same way. The *SeMALT2/T4* deletion was constructed by co-transforming pUDP063 and a repair DNA fragment formed by primers 11328 and 11329, while the *SeMALT3* deletion involved pUDP064 and a repair DNA formed by primers 11330 and 11331 (**Table S5**). Deletion of *SeMALT1*, *SeMALT2/T4*, and *SeMALT3* was verified by diagnostic PCR, using primers pairs 11671/11672, 11673/11674, and 11675/11676 (**Table S5**), respectively (**Figure 1C**). Prior to storing at −80°C, transformants were successively streaked on SM_{Acc}G and YPD plates. The genotype was verified after each plating round with the primers pairs mentioned above.

S. cerevisiae IMZ616 [*mal1Δ mal2Δ mal3Δ mph2Δ mph3Δ suc2Δ ima1Δ ima2Δ ima3Δ ima4Δ ima5Δ pUDC156 (Spcas9 URA3 ARS4 CEN6)*], which cannot grow on α-glucosides (Marques et al., 2018) was used as a host to test the functionality of individual *S. eubayanus* (putative) maltose transporter genes. *S. cerevisiae* IMX1253 was constructed by integrating the *S. cerevisiae* maltase gene *ScMAL12* and the *SeMALT1* transporter gene at the *ScSGA1* locus of strain IMZ616 (**Figure 2**). The *ScSGA1* gene encodes an intracellular sporulation-specific glucoamylase (Yamashita and Fukui, 1985) that is not expressed during vegetative growth (Knijnenburg et al., 2009). This integration site was shown suitable for expression of single or multiple genes as previously demonstrated

TABLE 2 | Plasmids used in this study.

Name	Relevant characteristics	Origin
p426-TEF-amdS	ori (ColE1) <i>bla</i> 2 μ amdSYM <i>TEF1_{pr}</i> - <i>CYC1_{ter}</i>	Solis-Escalante et al., 2013
pUDP004	ori (ColE1) <i>bla</i> panARSopt amdSYM <i>ScTDH3_{pr}</i> -Bsal-Bsal- <i>ScCYC1_{ter}</i> <i>AaTEF1_{pr}</i> - <i>Spcas9</i> ^{D147YP411T} - <i>ScPHO5_{ter}</i>	Gorter de Vries et al., 2017
pUDP052	ori (ColE1) <i>bla</i> panARSopt amdSYM <i>ScTDH3_{pr}</i> - <i>gRNA_{SGA1}</i> - <i>ScCYC1_{ter}</i> <i>AaTEF1_{pr}</i> - <i>Spcas9</i> ^{D147YP411T} - <i>ScPHO5_{ter}</i>	This study
pUDP062	ori (ColE1) <i>bla</i> panARSopt amdSYM <i>ScTDH3_{pr}</i> - <i>gRNA_{SeMALT1}</i> - <i>ScCYC1_{ter}</i> <i>AaTEF1_{pr}</i> - <i>Spcas9</i> ^{D147YP411T} - <i>ScPHO5_{ter}</i>	This study
pUDP063	ori (ColE1) <i>bla</i> panARSopt amdSYM <i>ScTDH3_{pr}</i> - <i>gRNA_{SeMALT2/T4}</i> - <i>ScCYC1_{ter}</i> <i>AaTEF1_{pr}</i> - <i>Spcas9</i> ^{D147YP411T} - <i>ScPHO5_{ter}</i>	This study
pUDP064	ori (ColE1) <i>bla</i> panARSopt amdSYM <i>ScTDH3_{pr}</i> - <i>gRNA_{SeMALT3}</i> - <i>ScCYC1_{ter}</i> <i>AaTEF1_{pr}</i> - <i>Spcas9</i> ^{D147YP411T} - <i>ScPHO5_{ter}</i>	This study
pUDE044	ori (ColE1) <i>bla</i> 2 μ <i>ScTDH3_{pr}</i> - <i>ScMAL12</i> - <i>ScADH1_{ter}</i>	Basso et al., 2011
pUD479	ori (ColE1) <i>bla</i> 2 μ amdSYM <i>ScTEF1_{pr}</i> - <i>SeMALT1</i> - <i>ScCYC1_{ter}</i>	This study
pUD480	ori (ColE1) <i>bla</i> 2 μ amdSYM <i>ScTEF1_{pr}</i> - <i>SeMALT2/4</i> - <i>ScCYC1_{ter}</i>	This study
pUD481	ori (ColE1) <i>bla</i> 2 μ amdSYM <i>ScTEF1_{pr}</i> - <i>SeMALT3</i> - <i>ScCYC1_{ter}</i>	This study
pUD445	ori (ColE1) <i>bla</i> 2 μ amdSYM <i>ScTEF1_{pr}</i> - <i>ScAGT1</i> - <i>ScCYC1_{ter}</i>	This study
pUDR119	ori (ColE1) <i>bla</i> 2 μ AmdSYM <i>SNR52_{pr}</i> - <i>gRNA_{SGA1}</i> - <i>SUP4_{ter}</i>	van Rossum et al., 2016

in Mans et al. (2015), Kuijpers et al. (2016), Verhoeven et al. (2017), and Bracher et al. (2018) The fragment containing *ScMAL12* was PCR amplified using Phusion High-Fidelity DNA polymerase (Thermo Fisher Scientific) from pUDE044 (Basso et al., 2011) with primers 9596 and 9355, which included a 5' extension homologous to the upstream region of the *S. cerevisiae* *SGA1* locus and an extension homologous to the co-transformed transporter fragment, respectively. The DNA fragment carrying the *S. eubayanus* *SeMALT1* maltose symporter was PCR amplified from pUD479 using primers 9036 and 9039, which included a 5' extension homologous to the co-transformed transporter fragment and an extension homologous to the downstream region of the *S. cerevisiae* *SGA1* locus, respectively. To facilitate integration in strain IMZ616, the two PCR fragments were co-transformed with plasmid pUDR119, which expressed a gRNA targeting *ScSGA1* (spacer sequence: 5'-ATTGACCACTGGAATTCTTC-3') (van Rossum et al., 2016) (Figure 2A). The plasmid and repair fragments were transformed using the LiAc protocol (Gietz and Schiestl, 2007) and transformed cells were plated on SM_{Ac}G. Correct integration was verified by diagnostic PCR with primers pairs 4226/5043 and 942/4224 (Figure 2, Table S5). Strains *S. cerevisiae* IMX1254, IMX1255, and IMX1365 were constructed following the same principle, but instead of using pUD479 to generate

the transporter fragment, pUD480 pUD481 and pUD445 were used to PCR amplify *SeMALT2/T4*, *SeMALT3*, and *ScAGT1* respectively. Correct integration was verified by diagnostic PCR with primers pairs 4226/5043 and 942/4224 (Figure 2, Table S5). All PCR-amplified gene sequences were Sanger sequenced (Baseclear, Leiden, The Netherlands).

Genome Sequencing Illumina Sequencing

Genomic DNA from *S. eubayanus* CBS 12357^T was isolated as previously described in van den Broek et al. (2015). Paired-end sequencing (2-fold 150 bp) was performed on a 350 bp PCR-free insert library using Illumina HiSeq2500 (San Diego, CA) by Novogene (HK) Company Ltd (Hong Kong, China) with a sample size of 3.2 Gbase. Sequence data are available at NCBI under Bioproject accession number PRJNA450912.

MinION Sequencing

For Nanopore sequencing, a 1D sequencing library (SQK-LSK108) was prepared according to the manufacturer's recommendation and loaded onto an FLO-MIN106 (R9.4) flow cell, connected to a MinION Mk1B unit (Oxford Nanopore Technology, Oxford, United Kingdom). MinKNOW software (version 1.5.12; Oxford Nanopore Technology) was used for quality control of active pores and for sequencing. Raw files generated by MinKNOW were base called using Albacore (version 1.1.0; Oxford Nanopore Technology). Reads, in fastq format, with a minimum length of 1,000 bp were extracted, yielding 3.26 Gb of sequence with an average read length of 8.07 kb. Sequencing data are available at NCBI under Bioproject accession number PRJNA450912.

De novo Assembly

De novo assembly of the Oxford Nanopore MinION dataset was performed using Canu (v1.4, setting: genomesize = 12 m; Koren et al., 2017). Assembly correctness was assessed using Pilon (Walker et al., 2014) and further correction "polishing" of sequencing/assembly errors was performed by aligning Illumina reads with BWA (Li and Durbin, 2010) using correction of only SNPs and short indels (-fix bases parameter). Genome assembly gene annotation was performed with the MAKER2 annotation pipeline (version 2.31.9) (Holt and Yandell, 2011) using SNAP (version 2013-11-29) (Korf, 2004) and Augustus (version 3.2.3) (Stanke et al., 2006) as *ab initio* gene predictors. *S. cerevisiae* S288C EST and protein sequences were obtained from SGD (Saccharomyces Genome Database, <http://www.yeastgenome.org/>) and were aligned using BLASTX on the obtained polished sequence assembly (BLAST version 2.2.28+) (Camacho et al., 2009). Predicted translated protein sequences of the final gene model were aligned to the *S. cerevisiae* S288C protein Swiss-Prot database using BLASTP (<http://www.uniprot.org/>). Custom-made Perl scripts were used to map systematic names to the annotated gene names. Error rates in the nanopore-sequencing data were estimated from the q score (Phred scaled) per read, as calculated by the base caller Albacore (version 1.1.0) (Oxford Nanopore Technology). Average q score was used to calculate the error $P = 10^{q/10}$.

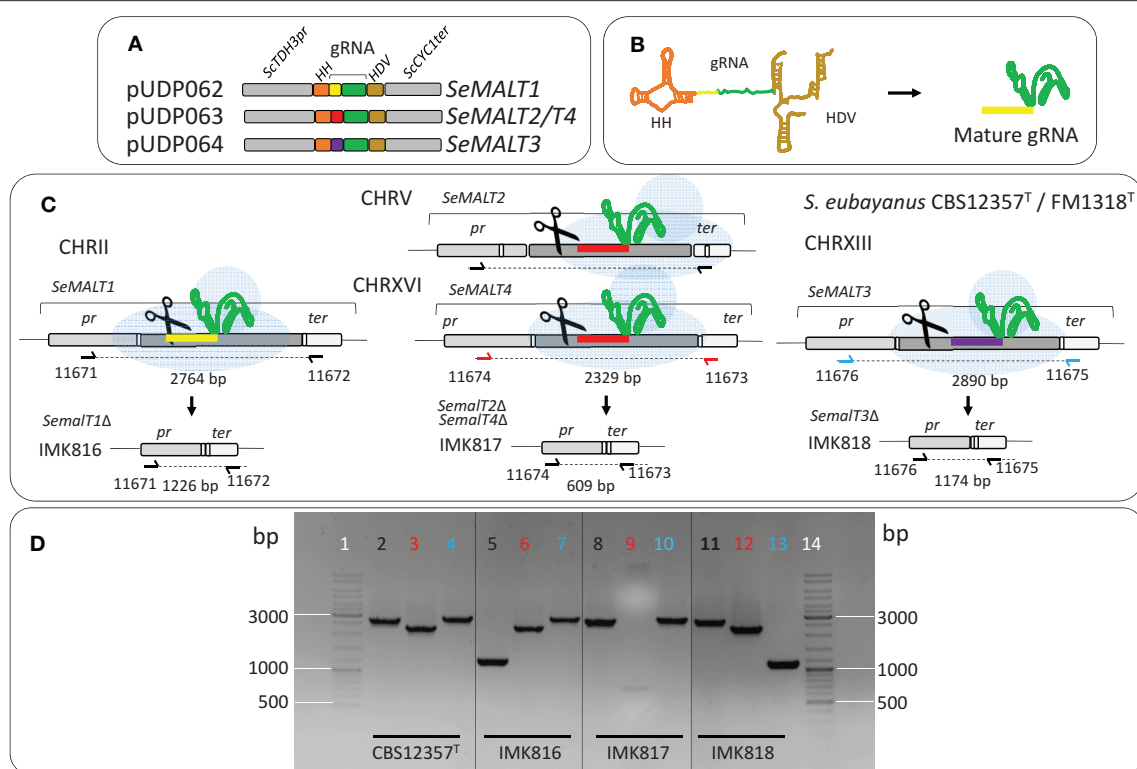


FIGURE 1 | Deletion of *SeMALT* genes using CRISPR-Cas9-assisted genome editing in *S. eubayanus* CBS 12357^T. **(A)** Representation of the gRNA expression cassette in pUDP062, pUDP063, and pUDP064. gRNAs targeting either *SeMALT1*, *SeMALT2/T4* or *SeMALT3* were flanked by a 5' hammerhead ribozyme (HH, orange) and a 3' hepatitis-δ virus ribozyme (HD, bronze). These constructs were expressed from the RNA polymerase II *ScTDH3* promoter and the *ScCYC1* terminator. **(B)** Upon ribozyme self-cleavage, a mature gRNA comprising the *SeMALT* guiding spacer (yellow) and the constant structural gRNA fragment (green) is released. **(C)** Schematic representation of *SeMALT* gene editing upon transformation of pUDP062 or pUDP063 or pUDP064 into *S. eubayanus* CBS 12357^T. Primers used for verification of transformants from transformation are indicated together with the size of the expected PCR products. **(D)** Validation of transformants derived from transformations of *S. eubayanus* CBS 12357^T with either pUDP062, pUDP063 or pUDP064 in presence of the corresponding 120 bp repair DNA fragments. Lanes 1 and 14 GeneRuler DNA Ladder Mix (Thermo Fischer Scientific). Lanes 2, 5, 8, and 11 fragments amplified with primers 11671 and 11672 (black label). Lanes 3, 6, 9, 12 fragments amplified with primers 11674 and 11673 (red label). Lanes 4, 7, 10, and 13 fragments amplified with primers 11676 and 11675 (blue label) from genomic DNA from CBS 12357^T (Lanes 2, 3, and 4), from IMK816 (*SeMALT1Δ*) (Lanes 5, 6, and 7), from IMK817 (*SeMALT2Δ* / *SeMALT4Δ*) (Lanes 8, 9, and 10), and from IMK818 (*SeMALT3Δ*) (Lanes 11, 12, and 13).

Transcriptome Analysis

RNA Isolation

S. eubayanus CBS 12357^T was grown in either SMG or SMM until mid-exponential phase (OD_{660nm} of 12.5). Culture samples corresponding to ca. Two Hundred and Forty Milligram of biomass wet weight were directly quenched in liquid nitrogen. The resulting frozen pellet was gently thawed on ice and spun down at 4700 × g for 5 min at 0°C. Pellets were then resuspended in 1.2 mL of ice-cold AE buffer (50 mM sodium acetate and 10 mM EDTA, pH 5.0), followed by addition of 1.2 mL of acid phenol/chloroform/isoamyl alcohol mix and 0.12 mL 10% sodium dodecyl sulfate. The resulting mix was vortexed for 30 s and incubated for 5 min at 65°C. After homogenizing for 30 s by vortexing, 800 μL aliquots were distributed in RNase-free screw-cap tubes (Tai et al., 2005). After centrifugation (15 min at 10,000 × g), the aqueous phase was transferred to a new tube containing 0.4 mL of acid phenol/chloroform. The mix was vortexed for 30 s, centrifuged (15 min at 10,000 × g) and the

aqueous phase was again transferred to a new tube. RNA was then ethanol precipitated and re-suspended in RNase-free water. Prior to cDNA synthesis, purity, concentration, and integrity of the RNA in the samples was assessed with the Nanodrop (Thermo Fisher Scientific), Qubit (Thermo Fisher Scientific), and Tapestation 220 with RNA Screen Tape (Agilent Technologies), respectively, according the manufacturers' recommendations. cDNA libraries were prepared using the TruSeq RNA V2 kit (Illumina) and sequenced on HiSeq 2500 (Illumina) at Novogene (HK) Company Ltd (Hong Kong, China).

Transcriptome Analysis

Libraries with 300 bp insert size were paired end sequenced (150 bp). Duplicate biological samples were processed, generating an average sequence quantity of 23.7M reads per sample. Reads were aligned to the Oxford Nanopore CBS 12357^T reference assembly using a two-pass STAR (Dobin and Gingeras, 2016) procedure. In the first pass, splice junctions were assembled

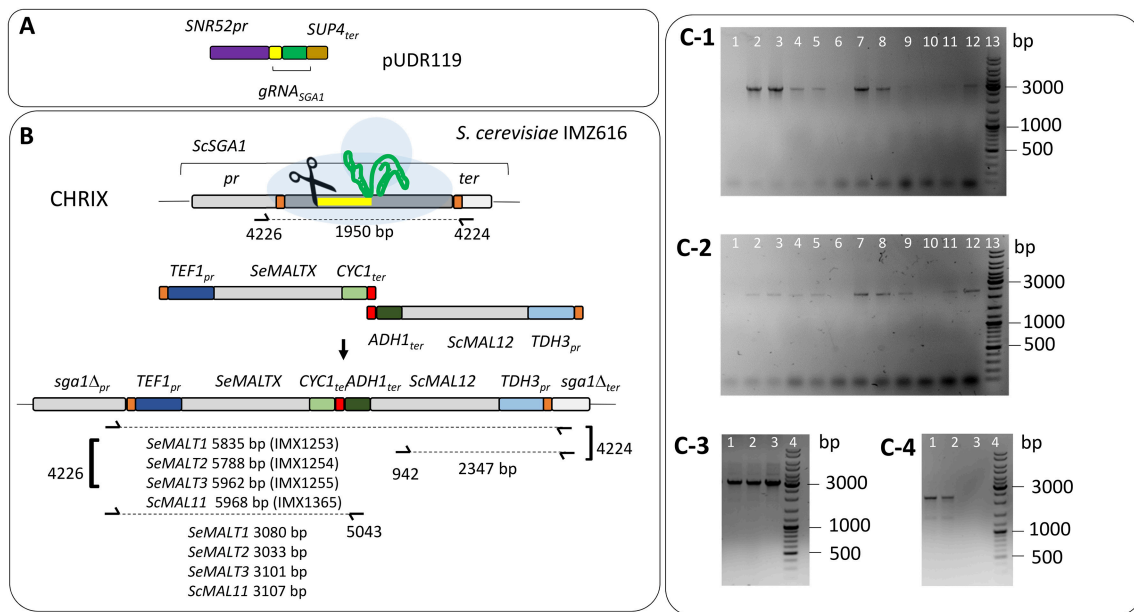


FIGURE 2 | Integration of *S. eubayanus* CBS 12357^T maltose transporter genes at the *ScSGA1* locus of *S. cerevisiae* IMZ616 (*mal1Δ mal2Δ mal3Δ mph2Δ mph3Δ::suc2Δ ima1Δ ima2Δ ima3Δ ima4Δ ima5Δ Spcas9*) (Marques et al., 2018). **(A)** Integration at the *ScSGA1* locus by Cas9-assisted genome editing. The Cas9-targeting gRNA was expressed from pUDR119 (van Rossum et al., 2016). **(B)** Schematic representation of the integration of *SeMALT* expression cassettes at the *ScSGA1* locus. Upon cleavage, the Cas9-induced double strand break was repaired by the two co-transformed fragments harboring a transporter gene expression cassette and the *S. cerevisiae* maltase gene *MAL12*, respectively. Primers used for verification of transformants from transformation are indicated together with the size of the expected PCR products. Integration of *SeMALT1*, *SeMALT2*, *SeMALT3* or *ScMAL11* resulted in *S. cerevisiae* strains IMX1253, IMX1254, IMX1255, and IMX1365 respectively. **(C)** Validation of the *S. cerevisiae* IMX1253, IMX1254, IMX1255, and IMX1365. **(C-1)** Lane 13 GeneRuler DNA Ladder Mix (Thermo Fischer Scientific). Lanes 1 to 12 fragments amplified with primers 4226 and 5043. Lanes 1, 2, 3, and 4 fragments amplified from clones transformed with *SeMALT1*. The strain corresponding to lane 3 was renamed IMX1253. Lanes 5, 6, 7, and 8 fragments amplified from clones transformed with *SeMALT2*. The strain corresponding to lane 7 was renamed IMX1254. Lanes 9, 10, 11, and 12 fragments amplified from clones transformed with *SeMALT3*. The strain corresponding to lane 12 was renamed IMX1255. **(C-2)** Lane 13 GeneRuler DNA Ladder Mix (Thermo Fischer Scientific). Lanes 1 to 12 fragments amplified with primers 942 and 4224. Lanes 1, 2, 3, and 4 fragments amplified from clones transformed with *SeMALT1*. Lane 3 corresponds to IMX1253. Lanes 5, 6, 7, and 8 fragments amplified from clones transformed with *SeMALT2*. Lane 7 corresponds to IMX1254. Lanes 9, 10, 11, and 12 fragments amplified from clones transformed with *SeMALT3*. Lane 12 corresponds to IMX1255. **(C-3)** Lanes 1 to 3 fragments amplified with primers 4226 and 5043. Lanes 1, 2, 3, and 4 fragments amplified from clones transformed with *ScMAL11*. The strain corresponding to lane 3 was renamed IMX1365. Lane 4 GeneRuler DNA Ladder Mix (Thermo Fischer Scientific). **(C-4)** Lanes 1 to 4 fragments amplified with primers 942 and 4224. Lanes 1, 2, and 3 fragments amplified from clones transformed with *ScMAL11*. Lane 3 corresponds to IMX1365. Lane 4 GeneRuler DNA Ladder Mix (Thermo Fischer Scientific).

and used to inform the second round of alignments. Introns between 15 and 4,000 bp were allowed, and soft clipping was disabled to prevent low-quality reads from being spuriously aligned. Ambiguously mapped reads were removed from the dataset. Expression level for each transcript were quantified using htseq-count (Anders et al., 2015) in union mode. Fragments per kilo-base of feature (gene) per million reads mapped (FPKM) values were calculated by “Applying the rpk method” from the edgeR package (Robinson et al., 2010; McCarthy et al., 2012). Differential expression analysis was performed using DESeq (Anders et al., 2013). Transcript data can be retrieve at the Genome Omnibus Database (GEO: <https://www.ncbi.nlm.nih.gov/geo/>) under accession number: GSE117246.

Analytical Methods

Optical densities of yeast cultures were measured with a Libra S11 spectrophotometer (Biochrom, Cambridge, UK) at a wavelength

of 660 nm. Biomass dry weight was measured by filtering 10-mL culture samples over pre-weighed nitrocellulose filters with a pore size of 0.45 μm. Filters were washed with 10 mL water, dried in a microwave oven (20 min at 350 W) and reweighed. Each measurement was performed in duplicate. For glucose, maltose, maltotriose, and ethanol analysis, culture samples were centrifuged 5 min at 10,000 g and supernatants were analyzed by high-performance liquid chromatography (HPLC) analysis on an Agilent 1260 HPLC equipped with a Bio-Rad HPX 87 H column (Bio-Rad, Hercules, CA). Elution was performed at 65°C with 5 mM H₂SO₄ at a flow rate of 0.8 mL min⁻¹. Detection was by means of an Agilent refractive-index detector and an Agilent 1260 VWD detector.

Viability Measurements Using Fluorescence-Assisted Cell Sorting

Cultures were analyzed on a BD FACSariaTM II SORP Cell Sorter (BD Biosciences, Franklin Lakes, NJ) equipped with 355, 445,

488, 561, and 640 nm lasers and a 70 μ m nozzle, and operated with filtered FACSFlow™ (BD Biosciences). Correct cytometer performance was evaluated prior to each experiment by running a CST cycle with corresponding CS&T Beads (BD Biosciences). Drop delay for sorting was determined by running an Auto Drop Delay cycle with Accudrop Beads (BD Biosciences). Morphology of the cells was analyzed by plotting forward scatter (FSC) against side scatter (SSC). Ninety-Six single cells were sorted onto 96-well format Nunc omnitray (Thermo Scientific) plates containing YPD agar using a “single cell” sorting mask, corresponding to a yield mask of 0, a purity mask of 32 and a phase mask of 16. Viability was measured as the average percentage of sorted cells able to form a colony after 48 h incubation at 30°C on three triplicate plates.

RESULTS

A High-Quality *S. eubayanus* Genome Assembly With 330 kb of Previously Unexplored Sequence Including Four *MAL* Loci

Owing to advances in genome sequencing technology, the quality of genome sequence data of *S. eubayanus* CBS 12357^T/FM1318 has gradually improved (Libkind et al., 2011; Baker et al., 2015; Hebly et al., 2015; Okuno et al., 2016). The currently available reference sequence is based on second generation sequencing technology (Illumina generated data), obtained from libraries with different insert sizes that were co-assembled into a 11.66 Mb genome, comprising 144 contigs forming 22 scaffolds. While representing an important resource for research on *S. eubayanus* and *S. pastorianus*, this most advanced draft genome sequence is incomplete (Baker et al., 2015). In particular multiple repeated regions, such as subtelomeric regions, are not yet fully resolved due to limitations of short-read sequencing technology. In total, approximately 122 kb of the scaffolded genome remain undefined.

To generate a near-complete, chromosome-level *de novo* assembly of *S. eubayanus* CBS 12357^T, we used long-read sequencing with third-generation single-molecule technology (Oxford Nanopore Technology MinION platform). A single flow cell was used to generate 3.3 Gb of sequence reads, with an average read length of 8 kb and an estimated average error rate of 9.6%. These data represented a genome coverage of 135 fold of the estimated diploid genome size (24 Mb). An assembly exclusively based on the MinION reads was generated with the Canu program (Koren et al., 2017). This assembly yielded 19 contigs, which is 8-fold fewer than obtained in the short-read-only assembly of the latest CBS 12357^T draft genome (Baker et al., 2015). In the MinION-based assembly, the mitochondrial genome and all chromosomes except for CHRXII were assembled as single contigs. CHRXII was manually reconstructed by joining three contigs, with a 1,000 N residues gaps introduced between the contigs. The sequence discontinuity was caused by the inability of the assembly software to handle the highly repetitive DNA organization of the rDNA locus

(Figure 3). This approach yielded a nearly complete 11.9 Mb genome assembly.

Prior to annotation, the assembly based on MinION sequencing data was “polished” with additional Illumina sequencing data using Pilon (Walker et al., 2014). *In fine* this polished genome assembly included 330 kb of sequence which were not assembled in the previous genome assembly. With the exception of a region on chromosome XII that corresponded to a partially reconstructed rDNA locus, additional sequences were mainly located in the subtelomeric regions (Figure 3A). A total of 5,444 ORFs were annotated, including 41 previously unassembled ORFs (Baker et al., 2015). Additionally, 60 ORFs were modified relative to the earlier draft genome, often leading to a redefinition of start and stop codons (Figure 3A, Table S6). For 65 of the 101 new genes, a paralog or an identical copy of the gene had already been assembled at a different location in the previous assembly. Gene ontology analysis using Fischer’s Exact Test revealed an overrepresentation among the new genes of three GO categories related to sugar transport and cell wall (Table 3). This is not that surprising since, subtelomeres are acknowledged to be the major chromosomal regions involved functional evolution as they are sites for large rearrangement in term of structure, gene content and copy number (not only gain but also loss-of-function variants; Brown et al., 2010; Bergström et al., 2014).

Four subtelomeric regions harbored complete sequences of putative maltose transporters. Two of these, which contained *SeMALT1* and *SeMALT3*, showed structural features that differed from those of canonical *S. cerevisiae* *MAL* loci. The CHRII locus only contained a transporter gene (*SeMALT1*) while the CHRXIII “*SeMAL* locus” consisted of a transporter gene (*SeMALT3*) flanked by two non-identical genes that strongly resembled the *S. cerevisiae* regulator genes *MAL33* and *MAL63* (Figure 3B). In contrast, the *S. eubayanus* *MAL* loci on CHRV and CHRXVI showed the same organization as the well described *S. cerevisiae* *MAL* loci. Starting from their telomeric ends, they contained a maltase gene (*SeMAL32*), followed by the transporter gene (*SeMALT2* on CHRV and *SeMALT4* on CHRXVI), which shared a bi-directional promoter with the maltase gene, and a *MAL* regulator gene (Figure 3B, Figure S8). Similarity between the right-arm CHRV and left-arm CHRXVI subtelomeric regions extended beyond the *SeMAL* genes, with a sequence identity of 94% and shared gene synteny over a 20 kb region (Figure 3B). The fully assembled *SeMALT4* gene shared 99.7% identity with *SeMALT2*, from which it differed by only five nucleotides. None of these five nucleotide variations affected the predicted amino acid sequence of the encoded transporters.

Systematic Deletion of *MALT* Genes Revealed That *SeMALT2/SeMALT4* Are Essential for Growth Maltose

To explore the contribution of the four *S. eubayanus* *MALT* genes to maltose consumption, deletion strains were constructed. Because the high sequence similarity of *SeMALT2* and

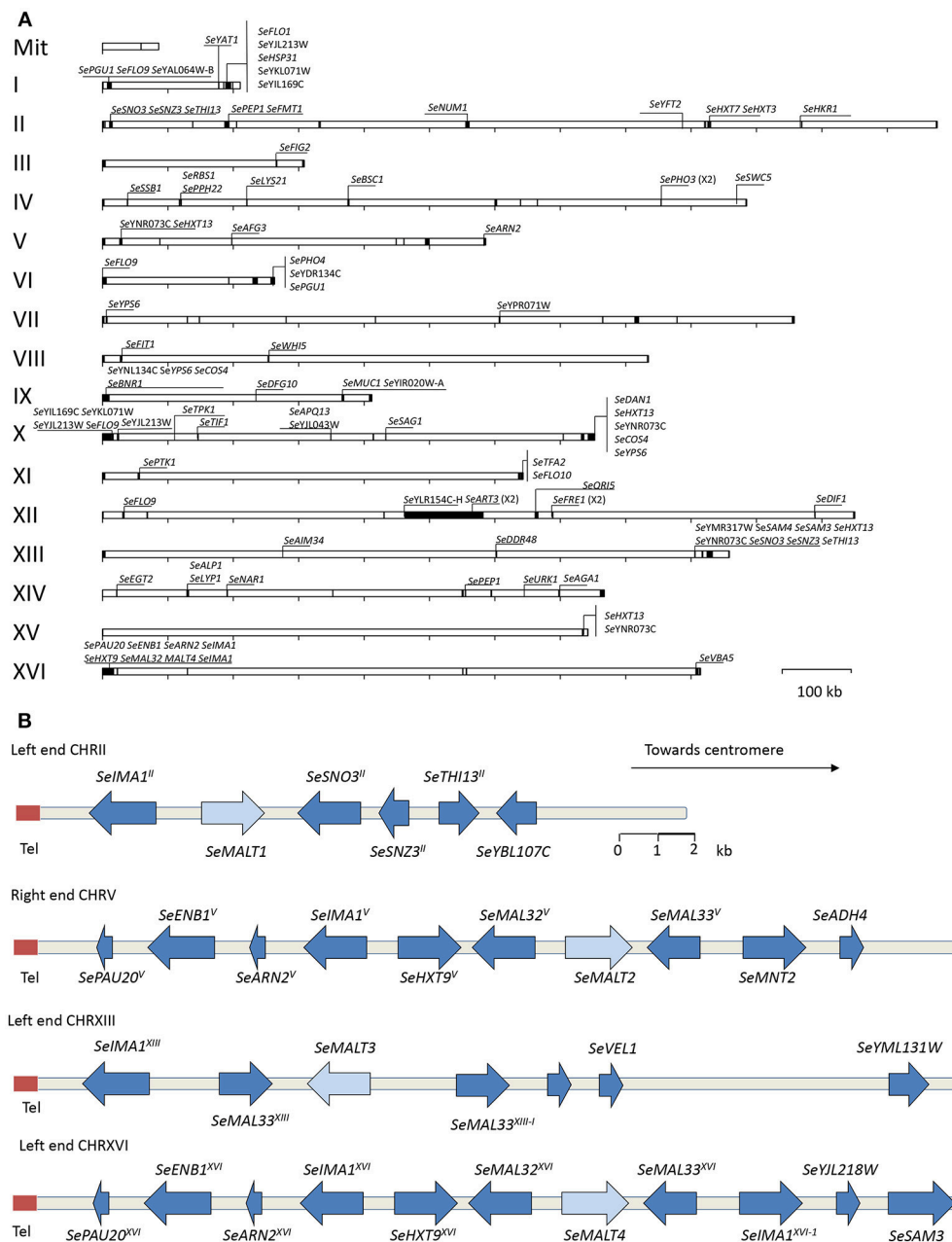


FIGURE 3 | High-quality *S. eubayanus* CBS12357^T genome assembly with 330 kb of unexplored sequence including four MAL loci. **(A)** Representation of the assembled *S. eubayanus* chromosomes, the black boxes denote newly added sequences. New annotated open reading frames and gene entries modified relative to the earlier draft genome (Baker et al., 2015) often leading to a redefinition of start and stop codons. **(B)** Organization of subtelomeric regions including maltose metabolism genes. Arrows denote the direction of transcription. The label “Tel” indicates the position of the telomere. The *SeMALT* genes are indicated in light blue. The gene and interval sizes are approximately to scale.

SeMALT4 complicated individual deletion of these genes, three strains were constructed with either a single deletion of *SeMALT1* or *SeMALT3* or a double deletion of *SeMALT2* and *SeMALT4* (Figure 1). The option offered by CRISPR-Cas9 to simultaneously delete of multiple gene copies in a single transformation step (Mans et al., 2015) is especially helpful in diploid strains such as *S. eubayanus* CBS 12357^T.

To explore the use of this methodology in *S. eubayanus*, we used a broad-host-range yeast plasmid for co-expression of *Spcas9* and a cassette encoding a ribozyme-flanked gRNA, which was successfully used in the *Saccharomycotina* yeasts *S. pastorianus* (Gorter de Vries et al., 2017), *Kluyveromyces* sp. and *Ogataea* sp. (Juergens et al., 2018). Cloning of specific gRNA cassettes targeting *SeMALT1*, *SeMALT2/T4*, and *SeMALT3* in

TABLE 3 | Overrepresented GO functional categories among 101 newly identified genes in a MinION-sequencing based *S. eubayanus* CBS 12357 genome assembly annotation.

GO	Function	Genes	P-value*
GO:0031225	Anchored component of membrane (15)	<i>SeFLO1</i> , <i>SeFLO9</i> (X4), <i>SeFLO10</i> , <i>SeFIG2</i> , <i>SeYPS6</i> (X3), <i>SeSAG1</i> , <i>SeDAN1</i> , <i>SeEGT2</i> , <i>SeAGA1</i> ,	1.78E–10
GO:0005618	Cell wall (15)	<i>SeYIL169C</i>	7.04E–09
GO:0008645	Hexose transport (8)	<i>SeHXT7</i> , <i>SeHXT3</i> , <i>SeHXT13</i> (X4), <i>SeMAL31/SeMALT4</i> , <i>SeHXT9</i>	4.77E–4

*Enrichment of functional categories was assessed by Fisher's exact test using Bonferroni correction.

pUDP002 resulted in pUDP062, pUDP063, and pUDP064, respectively. These plasmids were then transformed into *S. eubayanus* CBS 12357^T, either alone or in combination with a 120-bp double stranded repair DNA fragment for the targeted *SeMALT* gene (Figure 1). In the absence of a repair fragment, transformation with a gRNA-expressing construct was expected to be fatal if both gene copies were cut, unless both breaks were repaired by non-homologous end joining (NHEJ) of the induced double strand breaks. However, transformation of *S. eubayanus* CBS 12357^T with pUDP062, pUDP063 or pUDP064 alone yielded 1100, 128, and 9 transformants, respectively. These numbers were not substantially different from those observed upon co-transformation of the corresponding repair fragments (3000, 114, and 13 colonies, respectively). Based on a set of 30 transformants, genome editing with the gRNA_{*SeMALT1*} yielded the lowest frequency of transformants in which both gene copies were deleted (3%). The *SeMALT3* gRNA performed better with a 7% frequency out of 13 transformants tested, while the gRNA targeting *SeMALT2/T4* showed an efficiency of 40% of accurate deletion of both copies of the two genes out of a set of eight transformants.

The resulting *S. eubayanus* deletion strains IMK816 (*SeMALT1*Δ), IMK817 (*SeMALT2*Δ *SeMALT4*Δ), and IMK818 (*SeMALT3*Δ), as well as the wild-type strain CBS 12357^T, were grown in SMG and SMM media. While specific growth rates of all four strains in SMG were the same (0.22 h⁻¹ at 20°C, Table 4), strain IMK187 (*SeMALT2*Δ *SeMALT4*Δ) did not grow on maltose (Figure 4). Conversely, strains IMK816 and IMK818 exhibited the same specific growth rate on maltose as the reference strain (0.17 h⁻¹ at 20°C, Table 4). These data suggested that only *SeMALT2* and/or *SeMALT4* only contributed to growth on maltose of wild-type *S. eubayanus* CBS 12357^T.

SeMALT1, SeMALT2/T4, and SeMALT3 All Support Maltose Uptake

For further functional analysis, *SeMALT1*, *SeMALT2*, and *SeMALT3* were expressed in a maltose-transporter negative *S. cerevisiae* strain background. *SeMALT4* was not included in this comparison, as it encodes a protein with the same amino

acid sequence as *SeMALT2*. The maltose-negative *S. cerevisiae* strain IMZ616 originates from *S. cerevisiae* CEN.PK102-3A, which carries three *MAL* loci (*MAL1*, *MAL2*, and *MAL3*) (Basso et al., 2011). To eliminate growth on α-glucosides, these three *MAL* loci, *MPH2*, and *MPH3* as well as the α-glucoside hydrolase-encoding genes *SUC2* and *IMA1-5* were deleted, yielding *S. cerevisiae* IMK291 (Marques et al., 2017). Introduction of *cas9* into this strain yielded IMZ616 (Marques et al., 2018).

Restoration of growth on maltose of *S. cerevisiae* IMZ616 requires simultaneous expression of a maltose transporter and a maltase. Therefore, the three *S. eubayanus* transporter genes were cloned behind the constitutive *ScTEF1* promoter and, together with an expression cassette for the *ScMAL12* maltase gene, integrated at the *SGA1* locus of *S. cerevisiae* IMZ616 (Figure 2). The resulting *S. cerevisiae* strains IMX1253, IMX1254, IMX1255, which expressed *SeMALT1*, *SeMALT2*, and *SeMALT3*, respectively, were grown on SMJM. As expected, the host strain IMZ616 did not show any growth on maltose, while the three *SeMALT*-expressing strains showed different growth profiles on this disaccharide. Strain IMX1255 (*SeMALT3*) resumed growth after a lag phase of ~10 h and consumed half of the maltose supplied (Figure 5). Strains IMX1253 (*SeMALT1*) and IMX1254 (*SeMALT2*) showed lag phases of 100 and 250 h, respectively. However, after these lag phases, maltose was consumed. Strain IMX1254 (*SeMALT2*) consumed 75% of the supplied maltose in 150 h. In the same conditions the control strain IMX1365 co expressing *ScAGT1* and *ScMAL12* showed a short lag phase of 10 h and that was immediately followed by exponential growth, IMX1365 reached stationary phase and full maltose consumption in less than 100 h a performance comparable to the IMX1255 (*SeMALT3*) (Figure 5).

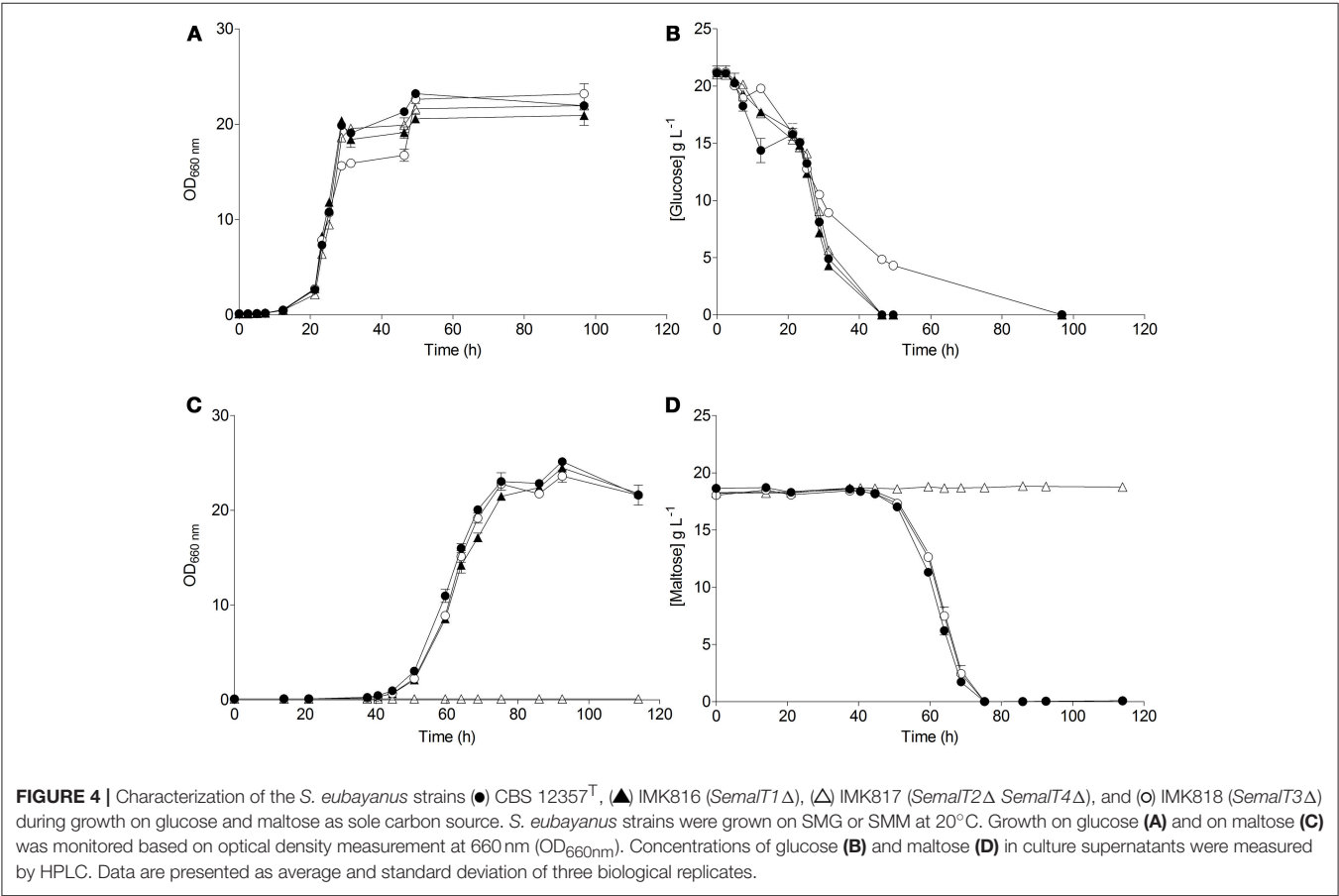
These delayed growth phenotypes of the *SeMALT*-expressing strains resemble those observed during growth on lactose of *S. cerevisiae* strains expressing the β-galactosidase (*LAC4*) and the lactose permease (*LAC12*) genes of *Kluyveromyces marxianus* and *Kluyveromyces lactis* (Domingues et al., 1999; Guimarães et al., 2008). In those studies, lactose utilization first had to be improved by laboratory evolution which resulted in lowering copy number of the plasmid harboring the permease and hydrolase genes as well as a short internal deletion located in the bi-directional promoter driving expression of the two genes (Guimarães et al., 2008). The same way, an adaptation step have been included in the workflow for complementation of the hexose transporter null (*hxt*⁰) strain EBYWV4000 with human glucose transporter (*GLUT*) (Boles and Oreb, 2018) suggesting that swapping transporter or implementing new assimilatory pathway remains non-trivial.

When, at the end of a first round of batch cultivation on maltose, cells of the *SeMALT*-expressing strains were transferred to fresh maltose medium, they all showed instantaneous growth at a specific growth rate of 0.13 h⁻¹ (Table 4). Under the same conditions, *S. eubayanus* CBS 12357^T grew on maltose at a specific growth rate of 0.17 h⁻¹ (Figure 5, Table 4). Even after transfer to fresh maltose medium, none of the

TABLE 4 | Specific growth rates (h^{-1}) of *S. eubayanus* CBS 12357^T (Libkind et al., 2011), *S. eubayanus* (Se) maltose transporter deletion mutants, *S. cerevisiae* (Sc) strains overexpressing individual *S. eubayanus* maltose transporter genes and the maltose-consumption-deficient host strain *S. cerevisiae* IMZ616 (Marques et al., 2017).

Strain	Species	Relevant genotype or phenotype	Specific growth rate (h^{-1})	
			Glucose	Maltose
CBS 12357 ^T	Se	<i>SeMALT1 SeMALT2 SeMALT3 SeMALT4</i>	0.24 ± 0.003	0.17 ± 0.001
IMK816	Se	<i>SemalT1Δ SeMALT2 SeMALT3 SeMALT4</i>	0.22 ± 0.001	0.17 ± 0.000
IMK817	Se	<i>SeMALT1 SemalT2Δ SeMALT3 SemalT4Δ</i>	0.22 ± 0.002	0.002 ± 0.000
IMK818	Se	<i>SeMALT1 SeMALT2 SemalT3Δ SeMALT4</i>	0.22 ± 0.001	0.17 ± 0.002
IMZ616	Sc	"mal Δ "	0.19 ± 0.002	0.00 ± 0.000
IMX1253	Sc	"mal Δ " <i>ScTEF1_{pr}-SeMALT1-ScCYC1_{ter} ScMAL12</i>	0.20 ± 0.003	0.13 ± 0.002
IMX1254	Sc	"mal Δ " <i>ScTEF1_{pr}-SeMALT2-ScCYC1_{ter} ScMAL12</i>	0.18 ± 0.002	0.13 ± 0.001
IMX1255	Sc	"mal Δ " <i>ScTEF1_{pr}-SeMALT3-ScCYC1_{ter} ScMAL12</i>	0.19 ± 0.002	0.13 ± 0.004
IMX1365	Sc	"mal Δ " <i>ScTEF1_{pr}-ScMAL11-ScCYC1_{ter} ScMAL12</i>	0.19 ± 0.001	0.099 ± 0.005

S. eubayanus strains were grown on SMG and SMM media at 20°C. *S. cerevisiae* strains were grown on SM_UG and SM_UM at 20°C. Data represent average and standard deviation of three biological replicates. "mal Δ " denotes the following genotype *mal1 Δ mal2 Δ mal3 Δ mph2 Δ mph3 Δ suc2 Δ ima1 Δ ima2 Δ ima3 Δ ima4 Δ ima5 Δ .*



heterologously expressed *SeMALT* transporters enabled full maltose consumption in these cultures. Similarly to the first cycle of batch cultivation on maltose, strain IMX1254 (*MALT2*) consumed 75% of the maltose supplied, while strains IMX1255 (*SeMALT3*) and IMX1253 (*SeMALT1*) consumed ca. 50 and 35 percentage even after prolonged incubation, none of the *S. cerevisiae* strains expressing

an *SeMALT* gene nor *S. eubayanus* CBS 12357^T showed growth on maltotriose, while the positive control IMX1365 (*ScAGT1*) showed growth at a rate of $0.08 \pm 0.007 \text{ h}^{-1}$ (Figure S9). In contrast to the deletion study, which suggested that only *SeMalt2* and/or *SeMalt4* were able to transport maltose, heterologous expression in the *Mal*[−] *S. cerevisiae* strain

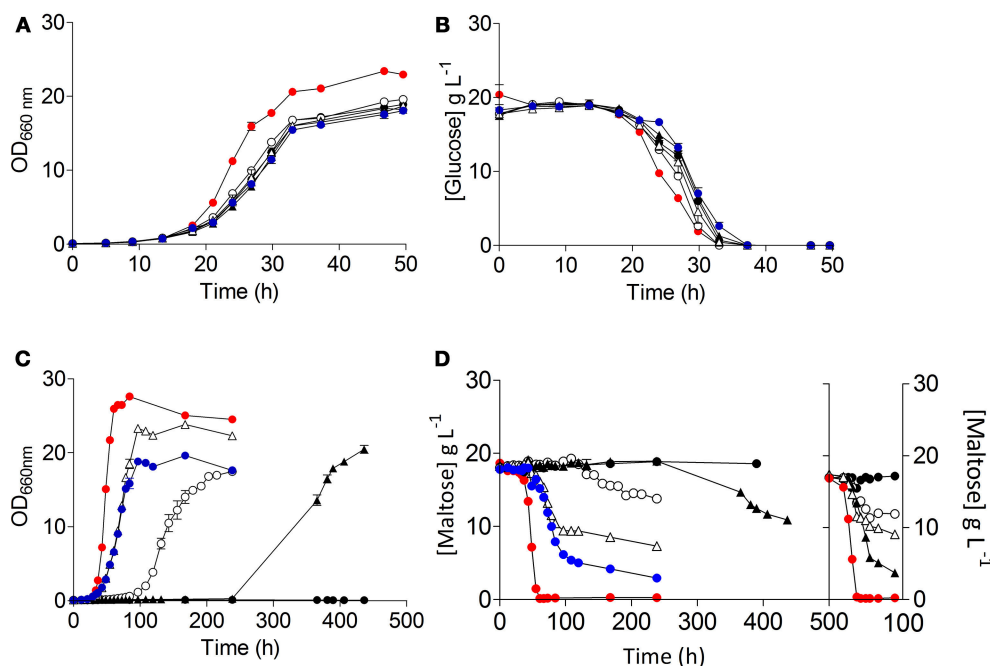


FIGURE 5 | Characterization of the *S. cerevisiae* strains (●) IMZ616 (Marques et al., 2018), (○) IMX1253 (*ScTEF1_{pr}-SeMALT1-ScCYC1_{ter}*), (▲) IMX1254 (*ScTEF1_{pr}-SeMALT2-ScCYC1_{ter}*), (△) IMX1255 (*ScTEF1_{pr}-SeMALT3-ScCYC1_{ter}*), (●) IMX1365 (*ScTEF1_{pr}-ScMAL11-ScCYC1_{ter}*), and (●) *S. eubayanus* CBS 12357^T. The strains were grown in SM_UG and SM_UM at 20°C. Growth on glucose (A) and on maltose (C) was monitored based on optical density measurement at 660 nm (OD_{660nm}). Concentrations of glucose (B) and maltose (D) in culture supernatants were measured by HPLC. (D) Shows the data of two consecutive batches. Data are presented as average and standard deviation of three biological replicates.

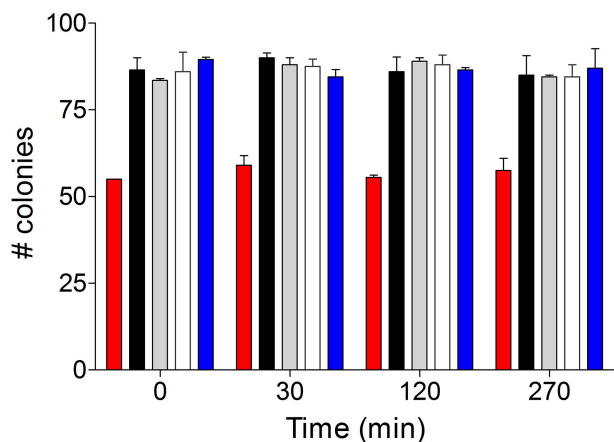


FIGURE 6 | Cell viability after exposure to maltose of glucose-pregrown cultures of *S. eubayanus* CBS 12357^T (■), *S. cerevisiae* IMZ616 (■), IMX1253 (*SeMALT1*) (■), IMX1254 (*SeMALT2*) (□) and IMX1255 (*SeMALT3*) (■). Cells from glucose-grown batch cultures were resuspended in SM. Prior addition of 20 g L⁻¹ of maltose, the initial viability was measured by sorting 96 cells per strain on SM_UG plates. The SM_UG cultures were sampled after 30, 120 and 270 min. The viability data are represented as averages ± mean deviations of three independent experiments for each strain.

IMZ616 showed that all four transporter genes encode transporters that, in combination with a maltase, allow growth on maltose.

Slow Growth of *SeMALT*-Expressing *S. cerevisiae* Strains Is Not Caused by Maltose Accelerated Death

Since maltose is imported by proton symporters energized by the plasma-membrane proton-motive force (Serrano et al., 1986; van den Broek et al., 1994), an unrestricted influx of maltose can lead to a fast influx of protons (Jansen et al., 2004). Unless the resulting rate of proton influx can be countered by the proton-pumping plasma-membrane ATPase (Pma1; Serrano et al., 1986), dissipation of the proton motive force and cytosolic acidification can cause maltose-induced cell death. Indeed, pronounced maltose-accelerated death has been observed *S. cerevisiae* evolved an increased maltose-transport capacity (Jansen et al., 2004). To test whether this phenomenon was responsible for the observed delayed growth of *S. cerevisiae* strains expressing *S. eubayanus* maltose transporters, the corresponding *S. cerevisiae* strains (IMX1243, IMX1254, and IMX1255) were first grown on SMG. Upon reaching late exponential phase, cells after washing were transferred to SM medium (without C-source) to give an OD₆₆₀ of 1.0. The resulting cell suspension was then sampled before and 30, 120, and 270 min after addition of 20 g L⁻¹ maltose. From each sample, 96 cells were sorted using gated Forward scatter signal and side scatter signal intensities on SMG medium and the viability was estimated based on the number of growing colonies. Neither the three *SeMALT*-expressing *S. cerevisiae* strains, nor *S. eubayanus* CBS 12357^T or the

Mal⁻ *S. cerevisiae* IMZ616 showed a decreased viability over a period of 270 min exposure to maltose (Figure 6). This result indicated that delayed growth of the *SeMALT*-expressing *S. cerevisiae* strains was not due to maltose accelerated death.

In Contrast to *SeMALT2/T4*, the Transporter Genes *SeMALT3* and *SeMALT1* Were not Efficiently Transcribed in Maltose Grown Cells

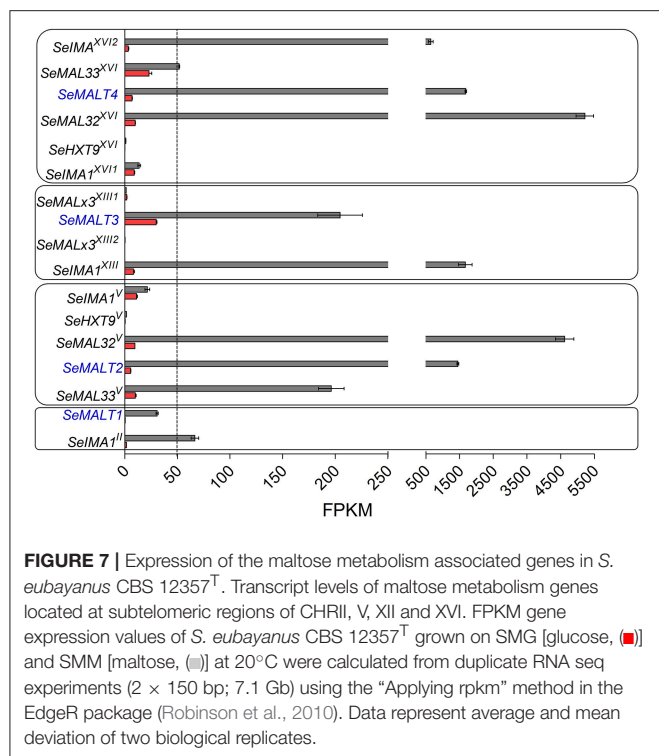
The inability of the double deletion mutant *S. eubayanus* IMK817 (*SeMALT2Δ-SeMALT4Δ*) to grow on maltose, despite the demonstration that *SeMALT1* and *SeMALT3* have the potential to encode functional maltose transporters, might indicate that *SeMALT1* and *SeMALT3* are not expressed in maltose-grown cultures. To investigate the impact of carbon sources on genome-wide transcript profiles and, more specifically, on transcriptional regulation of maltose metabolism genes, duplicate cultures of the *S. eubayanus* wild-type strain CBS 12357^T were grown on SMG and SMM and sampled in mid-exponential phase (OD_{660nm} = 12.5 ± 1.0). After mRNA isolation and processing, cDNA

libraries were sequenced with Illumina sequencing technology. cDNA sequencing reads were mapped onto the newly annotated *S. eubayanus* CBS 12357^T genome assembly and used to calculate FPKM (fragments per kilobase of feature (gene) per million reads mapped) expression values. FPKM results represent normalized expression values that take into account gene length and sequencing depth. Statistical analysis showed that 125 genes were differentially expressed in the glucose- and maltose-grown cultures with a fold difference > 4 (Table S7). All four *S. eubayanus* *MALT* transporters were significantly upregulated during growth on maltose and three (*SeMALT2*, *SeMALT4*, and *SeMALT1*) were found among the ten most upregulated genes (Table 5). *SeMALT2* and *SeMALT4* exhibited 262- and 244-fold higher transcript levels during growth on maltose than during growth on glucose. *SeMALT1* and *SeMALT3* represented a substantially lower fold-difference between maltose- and glucose-grown cultures (67- and 6.8- fold, respectively; Figure 7, Table 5). The most pronounced difference between *SeMALT2/SeMALT4* and *SeMALT1/SeMALT3* concerned their expression level. The FPKM value of *SeMALT1* in maltose-grown cultures was 48-fold lower than that of *SeMALT2* and *SeMALT4* value (FPKM_{*SeMALT1*} = 30; FPKM_{*SeMALT2*} = 1,683,

TABLE 5 | Transcript level of the 15 most strongly upregulated genes in maltose-grown *S. eubayanus* CBS 12357^T.

CHR	Coordinates	Gene name	Description	FPKM		Fold-change	Adjusted p-value
				Glucose	Maltose		
CHRXVI	13815–15572	<i>SeMAL32^{XVI}</i>	Maltase (alpha-D-glucosidase)	9.9 ± 0.2	5218.4 ± 365	525.6	0
CHRV	569448–571205	<i>SeMAL32^V</i>	Maltase (alpha-D-glucosidase)	9.6 ± 0.0	4620.4 ± 384	481.3	0
CHRV	566765–568606	<i>SeMALT2</i>	Maltose permease-member of the 12 TMB domain family of sugar transporters	5.5 ± 0.4	1451 ± 39	262.7	0
CHRXVI	16413–18254	<i>SeMALT4</i>	Maltose permease-member of the 12 TMB domain family of sugar transporters	6.9 ± 0.4	1683.8 ± 30	244.5	0
CHRV	971754–973529	<i>SeDAK2</i>	Dihydroxyacetone kinase required for detoxification of dihydroxyacetone	19.2 ± 0.6	3342.3 ± 171	174.1	0
CHRII	8497–10338	<i>SeMALT1</i>	Maltose permease-member of the 12 TMB domain family of sugar transporters	0.5 ± 0.0	30.8 ± 1	67.7	3.2E–82
CHRXVI	25036–25626	<i>SeYJL218W</i>	Putative acetyltransferase	8.3 ± 2.3	528.3 ± 4	63.9	2.1E–246
CHRV	968740–970695	<i>SeYFL054C</i>	Putative channel-like protein; similar to Fps1p	10.7 ± 2.2	529.6 ± 22	49.3	0
CHRII	5766–7535	<i>SeIMA1^{II}</i>	Isomaltase, α–1,6-glucosidase; required for isomaltose utilization	1.6 ± 0.1	66.6 ± 5	41.7	2.7E–150
CHRV	974654–975250	<i>SeREE1</i>	Cytoplasmic protein involved in the regulation of enolase	27.0 ± 1.1	1079.8 ± 76	40.0	2.3E–293
CHRV	564762–565970	<i>SeMAL33^V</i>	MAL-activator protein	10.0 ± 1.2	196.3 ± 17	19.6	4.4E–171
CHRV	512918–513952	<i>SeYRO2</i>	Protein with a putative role in response to acid stress	128.1 ± 6.9	2348.5 ± 110	18.3	2.5E–238
CHRXVI	732395–734113	<i>SeHXT13^{XVI}</i>	Putative transmembrane polyol transporter	14.2 ± 3.9	202.2 ± 19	14.3	3.4E–113
CHRV	552424–553068	<i>SeHSP26</i>	Small heat shock protein (sHSP) with chaperone activity	137.5 ± 19.5	1520.3 ± 33	11.1	1.2E–147
CHRVII	934199–934486	<i>SeSPG1</i>	Protein required for high temperature survival during stationary phase	6.3 ± 1.6	65.3 ± 5	10.3	2.3E–31

FPKM gene expression values of *S. eubayanus* CBS 12357^T grown on SMG (glucose) and SMM (Maltose) were calculated from duplicate RNA seq experiments (2 × 150 bp; 7.1 Gb) using the “Applying rpkm” method from the EdgeR package (Robinson et al., 2010). p-values were calculated using DESeq and adjusted for multi-testing. The descriptions were based on similarity with *S. cerevisiae* orthologs.



FPKM_{SeMAL4} = 1451). Similarly *SeMAL3* exhibited a FPKM value of only 200. In the same analysis, *SeACT1* and the glycolytic gene *SeTDH3*, genes commonly used as internal standard in transcript analysis exhibited substrate-independent FPKM values of 1600 and 6000, respectively. The maltase genes that were physically associated to *SeMAL2* and *SeMAL4* (Figure 3) were also strongly overexpressed in maltose-grown cultures, representing the highest upregulation fold difference in expression in glucose- and maltose-grown cultures of *S. eubayanus* (Table 5). This result confirms the functionality of the bidirectional promoters controlling the maltase and transporter genes in the *S. eubayanus* MAL loci harboring *SeMAL2* and *SeMAL4*.

DISCUSSION

S. eubayanus is not only a key contributor to the hybrid genomes of current *S. pastorianus* lager brewing strain and a basis for developing new brewing yeast hybrids (Gibson et al., 2017) but is also directly used for brewing specialty lager beer (<https://www.cnbc.com/2017/09/26/heineken-unveils-h41-a-beer-that-puts-yeast-into-focus.html>) (Hittinger et al., 2018). This study provided an upgraded, near-complete genome sequence of the *S. eubayanus* type strain CBS 12357^T and the first characterization of its four maltose transporter genes.

Complete and accurate *de novo* assembly of eukaryotic genomes has long been a major challenge. While short-read, high-coverage technologies such as the popular Illumina platforms enable accurate sequencing and assembly of unique

genomic sequences, they cannot resolve repetitive sequences. As previously demonstrated for *S. cerevisiae* CEN.PK113-7D (Nijkamp et al., 2012; Salazar et al., 2017; Jenjaroenpun et al., 2018), use of the Oxford Nanopore MinION platform generated long-reads that enabled a near-complete assembly of 15 of the 16 chromosomes of *S. eubayanus* CBS 12357^T (Figure 3A). Correct assembly of subtelomeric regions, which are known for their high sequence redundancy, was especially important in the context of this study in view of the subtelomeric location of the four MAL loci in this strain (Figure 3B). Despite the massive sequencing coverage yielded by a single flow cell, which was invaluable for genome scaffold construction, the intrinsic higher error rate of MinION sequencing (Goodwin et al., 2015) required polishing with additional Illumina sequencing data. Although highly effective, as illustrated by the complete assembly of the four MAL loci and the use of resulting high-quality genome sequence information for transcriptome analysis, this approach could not correct all errors. In particular, INDELs causing omissions of single nucleotides in homopolymer regions were left in the final assembly, which is a known pitfall of the single molecule nanopore sequencing (Oxford Nanopore Technology MinION). Manual curation and, in particular, validation of relevant sequences by Sanger sequencing will be required to further refine the current genome sequence of *S. eubayanus* CBS 12357^T.

Also the first application of CRISPR-Cas9-assisted genome editing in *S. eubayanus* reported in this study was greatly facilitated by the availability of an accurate genome sequence. Resolution of the sequences of the four *SeMAL* genes enabled optimization of the gRNA spacer selection, thereby minimizing the risk of undesirable off-target events. Although targeting efficiencies of the employed ribozyme-flanked-gRNA expression system (Gorter de Vries et al., 2017), which ranged from 3 to 40% were not ideal, Cas9-assisted gene deletion offered clear advantages over traditional methods that rely on a double crossover event that inserts a DNA fragment containing a selection marker in the recipient strain's genome (Baudin et al., 1993; Wilson et al., 2000). Cas9-assisted genome editing in *S. eubayanus* did not make use of a marker cassette and, most importantly, enabled simultaneous marker-free editing both alleles of the *SeMAL1* or the *SeMAL3* gene. In the case of *SeMAL2* and *SeMAL4*, a single transformation was even sufficient to delete both alleles of two genes (DiCarlo et al., 2013; Mans et al., 2015). Achieving these objectives with conventional techniques would have been extremely time consuming as multiple rounds of transformation and marker recovery would be required. Depending on consumer acceptance and regulations in place (Hall, 2016; Waltz, 2016), marker-free, Cas9-assisted genome editing of *S. eubayanus* may be combined with the generation of new *Saccharomyces* hybrids to accelerate development to novel brewing strains.

Cas9-mediated gene disruption and transcriptome analysis in *S. eubayanus* CBS 12357 showed that, in maltose-grown cultures, *SeMAL2* and *SeMAL4* were predominantly responsible for maltose uptake. These transporters are located within two nearly identical (97% identity) *SeMAL* loci that strongly resemble canonical *S. cerevisiae* MAL

loci (Charron et al., 1989; Chow et al., 1989; Vidgren et al., 2005). Although two other genes, *SeMALT3* and *SeMALT1*, could restore growth upon their expression in the *Mal*[−] *S. cerevisiae* strain IMZ616, their low expression levels in *S. eubayanus* CBS 12357^T were apparently not sufficient to support growth on maltose when *SeMALT2* and *SeMALT4* were both deleted (Figures 3, 7). This study did not provide new insights into the origin of *MTT1/MTY1* (Dietvorst et al., 2005; Salema-Oom et al., 2005) and *SeAGT1* (Nakao et al., 2009; Vidgren and Londesborough, 2012; Hebly et al., 2015) in industrial *S. pastorianus* strains as, consistent with earlier observations (Baker et al., 2015), no genes with strong sequence similarity to these maltose transporter genes were identified in the improved genome sequence of *S. eubayanus* CBS 12357^T.

The low expression levels of *SeMALT1* and *SeMALT3* may be related to their genomic context, as they were located in atypical *SeMAL* loci on CHRII and CHR XIII, respectively (Figure 3B). Assuming that these two atypical *SeMAL* loci evolved from a complete *MAL* locus, loss of the maltase gene may have disrupted the bi-directional promoter that, in *S. cerevisiae*, controls expression of both the maltose and the maltose transporter genes (Levine et al., 1992). In *S. cerevisiae*, the maltose regulator Mal63 binds two regulatory sites (5′MGSN₉MGS3′) located between positions −465 and −579 in the region separating the two divergent genes (Sirenko et al., 1995). While two of these elements were also found in the promoter regions of *SeMALT2* and *SeMALT4* (Figure S8), the *SeMALT1* and *SeMALT3* promoters each harbored only a single element (Figure S8). Alternatively, low expression of *SeMALT1* and *SeMALT3* in maltose-grown cultures may reflect a sub-functionalization that, during evolution, led to a different regulation and/or catalytic properties of the encoded transporters (Ohno, 1970; Hughes, 1994). Indeed, such a sub-functionalization has been experimentally reconstructed for yeast α-glucoside hydrolases (Voordeckers et al., 2012).

None of the four *SeMAL* genes identified in *S. eubayanus* CBS 12357^T were found to encode a functional maltotriose transporter. Although, the *S. eubayanus* Patagonian lineage is unlikely to have contributed the *S. eubayanus* subgenome of *S. pastorianus* lager brewing strains (Nakao et al., 2009), this observation would be consistent with the notion that *S. cerevisiae* has contributed the vital ability to ferment this trisaccharide, which is abundantly present in wort as in contrast multiple *S. cerevisiae* ale strains mainly issued from the beer 1 and

2 groups have been shown to use this sugar (Gallone et al., 2016). However, CBS 12357 is a representative of sole the Patagonia B group, one of five groups defined based of the phylogenetic distribution of *S. eubayanus* strains isolated so far (Peris et al., 2016). Therefore, we cannot at all exclude the possibility that this brewing relevant phenotypic trait of lager yeast would originate from the *S. eubayanus* parent. The only elements so far that could tilt toward this hypothesis are very fragmented sequencing data of an isolate from the Holartic group, that suggested occurrence of *S. eubayanus* ortholog of the *S. cerevisiae* *AGT1/MAL11* gene (Hebly et al., 2015). Therefore, the resource and methodology used in this study paved the way for further exploration of the diversity of *S. eubayanus* population and elucidation of *S. eubayanus* parental lineage of *S. pastorianus*.

AUTHOR CONTRIBUTIONS

J-MD, JP, AB, NB designed experiments. AB, NB, JG performed experiments. MB, NB, and J-MD performed bioinformatics work. J-MD, JP, AB, NB, JG analyzed result data. J-MD and JP wrote the manuscript. All authors read and approved the final manuscript.

ACKNOWLEDGMENTS

This project was funded by the Seventh Framework Programme of the European Union in the frame of the SP3 people support for training and career development of researchers (Marie Curie), Networks for Initial Training (PITN-GA-2013 ITN-2013-606795) YeastCell (<https://yeastcell.eu/>) and the BE-Basic R&D Program (<http://www.be-basic.org/>), which was granted an FES subsidy from the Dutch Ministry of Economic Affairs, Agriculture and Innovation (EL&I). We thank Alex Salazar, Niels Kuijpers (Heineken Supply Chain B.V.) and Jan-Maarten Geertman (Heineken Supply Chain B.V.) for their support and Arthur Gorter de Vries for critically reading the manuscript.

SUPPLEMENTARY MATERIAL

The Supplementary Material for this article can be found online at: <https://www.frontiersin.org/articles/10.3389/fmicb.2018.01786/full#supplementary-material>

REFERENCES

- Alves, S. L., Herberts, R. A., Hollatz, C., Trichez, D., Miletti, L. C., de Araujo, P. S. et al. (2008). Molecular analysis of maltotriose active transport and fermentation by *Saccharomyces cerevisiae* reveals a determinant role for the *AGT1* permease. *Appl. Environ. Microbiol.* 74, 1494–1501. doi: 10.1128/AEM.02570-07
- Anders, S., McCarthy, D. J., Chen, Y., Okoniewski, M., Smyth, G. K., Huber, W. et al. (2013). Count-based differential expression analysis of RNA sequencing data using R and Bioconductor. *Nat. Protoc.* 8, 1765–1786. doi: 10.1038/nprot.2013.099
- Anders, S., Pyl, P. T., and Huber, W. (2015). HTSeq—a Python framework to work with high-throughput sequencing data. *Bioinformatics* 31, 166–169. doi: 10.1093/bioinformatics/btu638
- Baker, E., Wang, B., Bellora, N., Peris, D., Hulfachor, A. B., Koshalek, J. A. et al. (2015). The genome sequence of *Saccharomyces eubayanus* and the domestication of lager-brewing yeasts. *Mol. Biol. Evol.* 32, 2818–2831. doi: 10.1093/molbev/msv168

- Bao, Z., Xiao, H., Lang, J., Zhang, L., Xiong, X., Sun, N. et al. (2015). Homology-integrated CRISPR-Cas (HI-CRISPR) system for one-step multigene disruption in *Saccharomyces cerevisiae*. *ACS Synth. Biol.* 4, 585–594. doi: 10.1021/sb500255k
- Basso, T. O., de Kok, S., Dario, M., do Espirito-Santo, J. C., Müller, G., Schlögl, P. S. et al. (2011). Engineering topology and kinetics of sucrose metabolism in *Saccharomyces cerevisiae* for improved ethanol yield. *Metab. Eng.* 13, 694–703. doi: 10.1016/j.ymben.2011.09.005
- Baudin, A., Ozier-Kalogeropoulos, O., Denouel, A., Lacroute, F., and Cullin, C. (1993). A simple and efficient method for direct gene deletion in *Saccharomyces cerevisiae*. *Nucleic Acids Res.* 21, 3329–3330. doi: 10.1093/nar/21.14.3329
- Bergström, A., Simpson, J. T., Salinas, F., Barré, B., Parts, L., Zia, A. et al. (2014). A high-definition view of functional genetic variation from natural yeast genomes. *Mol. Biol. Evol.* 31, 872–888. doi: 10.1093/molbev/msu037
- Bing, J., Han, P. J., Liu, W. Q., Wang, Q. M., and Bai, F. Y. (2014). Evidence for a far East Asian origin of lager beer yeast. *Curr. Biol.* 24, R380–R381. doi: 10.1016/j.cub.2014.04.031
- Bolat, I., Romagnoli, G., Zhu, F., Pronk, J. T., and Daran, J. M. (2013). Functional analysis and transcriptional regulation of two orthologs of ARO10, encoding broad-substrate-specificity 2-oxo-acid decarboxylases, in the brewing yeast *Saccharomyces pastorianus* CBS1483. *FEMS Yeast Res.* 13, 505–517. doi: 10.1111/1567-1364.12051
- Boles, E., and Oreb, M. (2018). A growth-based screening system for hexose transporters in yeast. *Methods Mol. Biol.* 1713, 123–135. doi: 10.1007/978-1-4939-7507-5_10
- Bracher, J. M., Verhoeven, M. D., Wisselink, H. W., Crimi, B., Nijland, J. G., Driessen, A. J. M. et al. (2018). The *Penicillium chrysogenum* transporter PcAraT enables high-affinity, glucose-insensitive L-arabinose transport in *Saccharomyces cerevisiae*. *Biotechnol. Biofuels* 11:63. doi: 10.1186/s13068-018-1047-6
- Brown, C. A., Murray, A. W., and Verstrepen, K. J. (2010). Rapid expansion and functional divergence of subtelomeric gene families in yeasts. *Curr. Biol.* 20, 895–903. doi: 10.1016/j.cub.2010.04.027
- Caesar, R., Palmfeldt, J., Gustafsson, J. S., Pettersson, E., Hashemi, S. H., and Blomberg, A. (2007). Comparative proteomics of industrial lager yeast reveals differential expression of the cerevisiae and non-cerevisiae parts of their genomes. *Proteomics* 7, 4135–4147. doi: 10.1002/pmic.200601020
- Camacho, C., Coulouris, G., Avagyan, V., Ma, N., Papadopoulos, J., Bealer, K., et al. (2009). BLAST+: architecture and applications. *BMC Bioinformatics* 10:421. doi: 10.1186/1471-2105-10-421
- Casaregola, S., Nguyen, H. V., Lapathitis, G., Kotyk, A., and Gaillardin, C. (2001). Analysis of the constitution of the beer yeast genome by PCR, sequencing and subtelomeric sequence hybridization. *Int. J. Syst. Evol. Microbiol.* 51, 1607–1618. doi: 10.1099/00207713-51-4-1607
- Charron, M. J., Read, E., Haut, S. R., and Michels, C. A. (1989). Molecular evolution of the telomere-associated MAL loci of *Saccharomyces*. *Genetics* 122, 307–316.
- Chow, T. H., Sollitt, P., and Marmur, J. (1989). Structure of the multigene family of MAL loci in *Saccharomyces*. *Mol. Gen. Genet.* 217, 60–69. doi: 10.1007/BF00330943
- Cohen, J. D., Goldenthal, M. J., Chow, T., Buchferer, B., and Marmur, J. (1985). Organization of the MAL loci of *Saccharomyces*. Physical identification and functional characterization of three genes at the MAL6 locus. *Mol. Gen. Genet.* 200, 1–8. doi: 10.1007/BF00383304
- Cousseau, F. E., Alves, S. L., Trichez, D., and Stambuk, B. U. (2013). Characterization of maltotriose transporters from the *Saccharomyces eubayanus* subgenome of the hybrid *Saccharomyces pastorianus* lager brewing yeast strain Weihenstephan 34/70. *Lett. Appl. Microbiol.* 56, 21–29. doi: 10.1111/lam.12011
- Day, R. E., Higgins, V. J., Rogers, P. J., and Dawes, I. W. (2002a). Characterization of the putative maltose transporters encoded by YDL247w and YJR160c. *Yeast* 19, 1015–1027. doi: 10.1002/yea.894
- Day, R. E., Rogers, P. J., Dawes, I. W., and Higgins, V. J. (2002b). Molecular analysis of maltotriose transport and utilization by *Saccharomyces cerevisiae*. *Appl. Environ. Microbiol.* 68, 5326–5335. doi: 10.1128/AEM.68.11.5326-5335.2002
- DiCarlo, J. E., Norville, J. E., Mali, P., Rios, X., Aach, J., and Church, G. M. (2013). Genome engineering in *Saccharomyces cerevisiae* using CRISPR-Cas systems. *Nucleic Acids Res.* 41, 4336–4343. doi: 10.1093/nar/gkt135
- Dietvorst, J., Londesborough, J., and Steensma, H. Y. (2005). Maltotriose utilization in lager yeast strains: MTT1 encodes a maltotriose transporter. *Yeast* 22, 775–788. doi: 10.1002/yea.1279
- Dobin, A., and Gingeras, T. R. (2016). Optimizing RNA-Seq Mapping with STAR. *Methods Mol. Biol.* 1415, 245–262. doi: 10.1007/978-1-4939-3572-7_13
- Domingues, L., Teixeira, J. A., and Lima, N. (1999). Construction of a flocculent *Saccharomyces cerevisiae* fermenting lactose. *Appl. Microbiol. Biotechnol.* 51, 621–626. doi: 10.1007/s002530051441
- Dubin, R. A., Needleman, R. B., Gossett, D., and Michels, C. A. (1985). Identification of the structural gene encoding maltase within the MAL6 locus of *Saccharomyces carlsbergensis*. *J. Bacteriol.* 164, 605–610.
- Entian, K.-D., and Kötter, P. (2007). “25 yeast genetic strain and plasmid collections,” in *Methods in Microbiology*, Vol. 36, eds Stansfield, I., and Stark, M. J. R. (London, UK: Academic Press), 629–66.
- Gallone, B., Steensels, J., Prahl, T., Soriaga, L., Saels, V., Herrera-Malaver, B. et al. (2016). Domestication and divergence of *Saccharomyces cerevisiae* beer yeasts. *Cell* 166, 1397–1410.e16. doi: 10.1016/j.cell.2016.08.020
- Gao, Y., and Zhao, Y. (2014). Self-processing of ribozyme-flanked RNAs into guide RNAs *in vitro* and *in vivo* for CRISPR-mediated genome editing. *J. Int. Plant Biol.* 56, 343–349. doi: 10.1111/jipb.12152
- Gayevskiy, V., and Goddard, M. R. (2016). *Saccharomyces eubayanus* and *Saccharomyces arboricola* reside in North Island native New Zealand forests. *Environ. Microbiol.* 18, 1137–1147. doi: 10.1111/1462-2920.13107
- Gibson, B., Geertman, J. A., Hittinger, C. T., Krogerus, K., Libkind, D., Louis, E. J. et al. (2017). New yeasts-new brews: modern approaches to brewing yeast design and development. *FEMS Yeast Res.* 17:fox038. doi: 10.1093/femsyr/fox038
- Gietz, R. D., and Schiestl, R. H. (2007). High-efficiency yeast transformation using the LiAc/SS carrier DNA/PEG method. *Nat. Protoc.* 2, 31–34. doi: 10.1038/nprot.2007.13
- Goodwin, S., Gurtowski, J., Ethe-Sayers, S., Deshpande, P., Schatz, M. C., and McCombie, W. R. (2015). Oxford Nanopore sequencing, hybrid error correction, and *de novo* assembly of a eukaryotic genome. *Genome Res.* 25, 1750–1756. doi: 10.1101/gr.191395.115
- Gorter de Vries, A. R., de Groot, P. A., van den Broek, M., and Daran, J. G. (2017). CRISPR-Cas9 mediated gene deletions in lager yeast *Saccharomyces pastorianus*. *Microb. Cell Fact.* 16: 222. doi: 10.1186/s12934-017-0835-1
- Guimarães, P. M., François, J., Parrou, J. L., Teixeira, J. A., and Domingues, L. (2008). Adaptive evolution of a lactose-consuming *Saccharomyces cerevisiae* recombinant. *Appl. Environ. Microbiol.* 74, 1748–1756. doi: 10.1128/AEM.00186-08
- Hall, S. S. (2016). Editing the mushroom. *Sci. Am.* 314, 56–63. doi: 10.1038/scientificamerican0316-56
- Han, E. K., Cotty, F., Sottas, C., Jiang, H., and Michels, C. A. (1995). Characterization of *AGT1* encoding a general alpha-glucoside transporter from *Saccharomyces*. *Mol. Microbiol.* 17, 1093–1107. doi: 10.1111/j.1365-2958.1995.mmi_17061093.x
- Hebly, M., Brickwedde, A., Bolat, I., Driessen, M. R., de Hulster, E. A., van den Broek, M. et al. (2015). *S. cerevisiae* x *S. eubayanus* interspecific hybrid, the best of both worlds and beyond. *FEMS Yeast Res.* 15:fov005. doi: 10.1093/femsyr/fov005
- Hewitt, S. K., Donaldson, I. J., Lovell, S. C., and Delneri, D. (2014). Sequencing and characterisation of rearrangements in three *S. pastorianus* strains reveals the presence of chimeric genes and gives evidence of breakpoint reuse. *PLoS ONE* 9: e92203. doi: 10.1371/journal.pone.0092203
- Hittinger, C. T., Steele, J. L., and Ryder, D. S. (2018). Diverse yeasts for diverse fermented beverages and foods. *Curr. Opin. Biotechnol.* 49, 199–206. doi: 10.1016/j.copbio.2017.10.004
- Holt, C., and Yandell, M. (2011). MAKER2: an annotation pipeline and genome-database management tool for second-generation genome projects. *BMC Bioinformatics* 12:491. doi: 10.1186/1471-2105-12-491
- Hughes, A. L. (1994). The evolution of functionally novel proteins after gene duplication. *Proc. Biol. Sci.* 256, 119–124. doi: 10.1098/rspb.1994.0058
- Jansen, M. L., Daran-Lapujade, P., de Winde, J. H., Piper, M. D., and Pronk, J. T. (2004). Prolonged maltose-limited cultivation of *Saccharomyces cerevisiae* selects for cells with improved maltose affinity and hypersensitivity. *Appl. Environ. Microbiol.* 70, 1956–1963. doi: 10.1128/AEM.70.4.1956-1963.2004

- Jenjaroenpun, P., Wongsurawat, T., Pereira, R., Patumcharoenpol, P., Ussery, D. W., Nielsen, J., et al. (2018). Complete genomic and transcriptional landscape analysis using third-generation sequencing: a case study of *Saccharomyces cerevisiae* CEN.PK113-7D. *Nucleic Acids Res.* 46:e38. doi: 10.1093/nar/gky014.
- Joubert, R., Brignon, P., Lehmann, C., Monribot, C., Gendreau, F., and Boucherie, H. (2000). Two-dimensional gel analysis of the proteome of lager brewing yeasts. *Yeast* 16, 511–222. doi: 10.1002/(SICI)1097-0061(200004)16:6<511::AID-YEA544>3.0.CO;2-I
- Juergens, H., Varela, J. A., de Vries, A. R. G., Perli, T., Gast, V. J. M., Gyurchev, N. Y. et al. (2018). Genome editing in *Kluyveromyces* and *Ogataea* yeasts using a broad-host-range Cas9/gRNA co-expression plasmid. *FEMS Yeast Res.* 18: foy012. doi: 10.1093/femsyr/foy012
- Knijnenburg, T. A., Daran, J. M., van den Broek, M. A., Daran-Lapujade, P. A., de Winde, J. H., Pronk, J. T., et al. (2009). Combinatorial effects of environmental parameters on transcriptional regulation in *Saccharomyces cerevisiae*: a quantitative analysis of a compendium of chemostat-based transcriptome data. *BMC Genomics* 10:53. doi: 10.1186/1471-2164-10-53
- Koren, S., Walenz, B. P., Berlin, K., Miller, J. R., Bergman, N. H., and Phillippy, A. M. (2017). Canu: scalable and accurate long-read assembly via adaptive k-mer weighting and repeat separation. *Genome Res.* 27, 722–736. doi: 10.1101/gr.215087.116
- Korf, I. (2004). Gene finding in novel genomes. *BMC Bioinformatics* 5:59. doi: 10.1186/1471-2105-5-59
- Krogerus, K., Magalhães, F., Vidgren, V., and Gibson, B. (2015). New lager yeast strains generated by interspecific hybridization. *J. Ind. Microbiol. Biotechnol.* 42, 769–778. doi: 10.1007/s10295-015-1597-6
- Krogerus, K., Magalhães, F., Vidgren, V., and Gibson, B. (2017a). Novel brewing yeast hybrids: creation and application. *Appl. Microbiol. Biotechnol.* 101, 65–78. doi: 10.1007/s00253-016-8007-5
- Krogerus, K., Seppänen-Laakso, T., Castillo, S., and Gibson, B. (2017b). Inheritance of brewing-relevant phenotypes in constructed *Saccharomyces cerevisiae* x *Saccharomyces eubayanus* hybrids. *Microb. Cell Fact.* 16:66. doi: 10.1186/s12934-017-0679-8
- Kuijpers, N. G., Solis-Escalante, D., Luttik, M. A., Bisschops, M. M., Boonekamp, F. J., van den Broek, M. et al. (2016). Pathway swapping: toward modular engineering of essential cellular processes. *Proc. Natl. Acad. Sci. U.S.A.* 113, 15060–15065. doi: 10.1073/pnas.1606701113
- Levine, J., Tanouye, L., and Michels, C. A. (1992). The UAS(MAL) is a bidirectional promoter element required for the expression of both the MAL61 and MAL62 genes of the *Saccharomyces* MAL6 locus. *Curr. Genet.* 22, 181–189. doi: 10.1007/BF00351724
- Li, H., and Durbin, R. (2010). Fast and accurate long-read alignment with Burrows-Wheeler transform. *Bioinformatics* 26, 589–595. doi: 10.1093/bioinformatics/btp698
- Libkind, D., Hittinger, C. T., Valério, E., Gonçalves, C., Dover, J., Johnston, M. et al. (2011). Microbe domestication and the identification of the wild genetic stock of lager-brewing yeast. *Proc. Natl. Acad. Sci. U.S.A.* 108, 14539–14544. doi: 10.1073/pnas.1105430108
- Magalhães, F., Krogerus, K., Vidgren, V., Sandell, M., and Gibson, B. (2017). Improved cider fermentation performance and quality with newly generated *Saccharomyces cerevisiae* x *Saccharomyces eubayanus* hybrids. *J. Ind. Microbiol. Biotechnol.* 44, 1203–1213. doi: 10.1007/s10295-017-1947-7
- Magalhães, F., Vidgren, V., Ruohonen, L., and Gibson, B. (2016). Maltose and maltotriose utilisation by group I strains of the hybrid lager yeast *Saccharomyces pastorianus*. *FEMS Yeast Res.* 16:fow053. doi: 10.1093/femsyr/fow053
- Mans, R., van Rossum, H. M., Wijsman, M., Backx, A., Kuijpers, N. G., van den Broek, M. et al. (2015). CRISPR/Cas9: a molecular Swiss army knife for simultaneous introduction of multiple genetic modifications in *Saccharomyces cerevisiae*. *FEMS Yeast Res.* 15:fov004. doi: 10.1093/femsyr/fov004
- Marques, W. L., Mans, R., Henderson, R. K., Marella, E. R., Horst, J. T., Hulster, E. et al. (2018). Combined engineering of disaccharide transport and phosphorylation for enhanced ATP yield from sucrose fermentation in *Saccharomyces cerevisiae*. *Metab. Eng.* 45, 121–133. doi: 10.1016/j.ymben.2017.11.012
- Marques, W. L., Mans, R., Marella, E. R., Cordeiro, R. L., van den Broek, M., Daran, J.-M., et al. (2017). Elimination of sucrose transport and hydrolysis in *Saccharomyces cerevisiae*, a platform strain for engineering sucrose metabolism. *FEMS Yeast Res.* 17:fox006. doi: 10.1093/femsyr/fox006
- McCarthy, D. J., Chen, Y., and Smyth, G. K. (2012). Differential expression analysis of multifactor RNA-Seq experiments with respect to biological variation. *Nucleic Acids Res.* 40, 4288–4297. doi: 10.1093/nar/gks042
- Michels, C. A., Read, E., Nat, K., and Charron, M. J. (1992). The telomere-associated MAL3 locus of *Saccharomyces* is a tandem array of repeated genes. *Yeast* 8, 655–665. doi: 10.1002/yea.320080809
- Nakao, Y., Kanamori, T., Itoh, T., Kodama, Y., Rainieri, S., Nakamura, N. et al. (2009). Genome sequence of the lager brewing yeast, an interspecies hybrid. *DNA Res.* 16, 115–129. doi: 10.1093/dnares/dsp003
- Nijkamp, J. F., van den Broek, M., Datema, E., de Kok, S., Bosman, L., Luttik, M. A., et al. (2012). *De novo* sequencing, assembly and analysis of the genome of the laboratory strain *Saccharomyces cerevisiae* CEN.PK113-7D, a model for modern industrial biotechnology. *Microb. Cell Fact.* 11:36. doi: 10.1186/1475-2859-11-36
- Ohno, S. (1970). *Evolution by Gene Duplication*. Berlin: Springer-Verlag.
- Okuno, M., Kajitani, R., Ryusui, R., Morimoto, H., Kodama, Y., and Itoh, T. (2016). Next-generation sequencing analysis of lager brewing yeast strains reveals the evolutionary history of interspecies hybridization. *DNA Res.* 23, 67–80. doi: 10.1093/dnares/dsv037
- Peris, D., Langdon, Q. K., Moriarty, R. V., Sylvester, K., Bontrager, M., Charron, G., et al. (2016). Complex ancestries of lager-brewing hybrids were shaped by standing variation in the wild yeast *Saccharomyces eubayanus*. *PLoS Genet.* 12:e1006155. doi: 10.1371/journal.pgen.1006155
- Peris, D., Moriarty, R. V., Alexander, W. G., Baker, E., Sylvester, K., Sardi, M. et al. (2017). Hybridization and adaptive evolution of diverse *Saccharomyces* species for cellulosic biofuel production. *Biotechnol. Biofuels* 10: 78.
- Peris, D., Sylvester, K., Libkind, D., Gonçalves, P., Sampaio, J. P., Alexander, W. G., et al. (2014). Population structure and reticulate evolution of *Saccharomyces eubayanus* and its lager-brewing hybrids. *Mol. Ecol.* 23, 2031–2045. doi: 10.1111/mec.12702
- Plourde-Owobi, L., Durner, S., Parrou, J. L., Wiczorke, R., Goma, G., and Francois, J. (1999). *AGT1*, encoding an alpha-glucoside transporter involved in uptake and intracellular accumulation of trehalose in *Saccharomyces cerevisiae*. *J. Bacteriol.* 181, 3830–3832.
- Rainieri, S., Kodama, Y., Kaneko, Y., Mikata, K., Nakao, Y., and Ashikari, T. (2006). Pure and mixed genetic lines of *Saccharomyces bayanus* and *Saccharomyces pastorianus* and their contribution to the lager brewing strain genome. *Appl. Environ. Microbiol.* 72, 3968–3974. doi: 10.1128/AEM.02769-05
- Robinson, M. D., McCarthy, D. J., and Smyth, G. K. (2010). edgeR: a Bioconductor package for differential expression analysis of digital gene expression data. *Bioinformatics* 26, 139–140. doi: 10.1093/bioinformatics/btp616
- Salazar, A. N., Gorter de Vries, A. R., van den Broek, M., Wijsman, M., de la Torre Cortés, P., Brickwedde, A., et al. (2017). Nanopore sequencing enables near-complete *de novo* assembly of *Saccharomyces cerevisiae* reference strain CEN.PK113-7D. *FEMS Yeast Res.* 17:fox074. doi: 10.1093/femsyr/fox074
- Salema-Oom, M., Valadao Pinto, V., Gonçalves, P., and Spencer-Martins, I. (2005). Maltotriose utilization by industrial *Saccharomyces* strains: characterization of a new member of the alpha-glucoside transporter family. *Appl. Environ. Microbiol.* 71, 5044–5049. doi: 10.1128/AEM.71.9.5044-5049.2005
- Serrano, R., Kielland-Brandt, M. C., and Fink, G. R. (1986). Yeast plasma membrane ATPase is essential for growth and has homology with (Na⁺, K⁺), K⁺- and Ca²⁺-ATPases. *Nature* 319, 689–693. doi: 10.1038/319689a0
- Serrano, R. (1977). Energy-requirements for maltose transport in yeast. *Eur. J. Biochem.* 80, 97–102. doi: 10.1111/j.1432-1033.1977.tb11861.x
- Sirenko, O. I., Ni, B., and Needleman, R. B. (1995). Purification and binding properties of the Mal63p activator of *Saccharomyces cerevisiae*. *Curr. Genet.* 27, 509–516. doi: 10.1007/BF00314440
- Solis-Escalante, D., Kuijpers, N. G., Bongaerts, N., Bolat, I., Bosman, L., Pronk, J. T. et al. (2013). amdSYM, a new dominant recyclable marker cassette for *Saccharomyces cerevisiae*. *FEMS Yeast Res.* 13, 126–139. doi: 10.1111/1567-1364.12024
- Stanke, M., Keller, O., Gunduz, I., Hayes, A., Waack, S., and Morgenstern, B. (2006). AUGUSTUS: *ab initio* prediction of alternative transcripts. *Nucleic Acids Res.* 34, W435–W439. doi: 10.1093/nar/gkl200
- Steensels, J., Meersman, E., Snoek, T., Sael, V., and Verstrepen, K. J. (2014). Large-scale selection and breeding to generate industrial yeasts

- with superior aroma production. *Appl. Environ. Microbiol.* 80, 6965–6975. doi: 10.1128/AEM.02235-14
- Tai, S. L., Boer, V. M., Daran-Lapujade, P., Walsh, M. C., de Winde, J. H., Daran, J. M. et al. (2005). Two-dimensional transcriptome analysis in chemostat cultures - combinatorial effects of oxygen availability and macronutrient limitation in *Saccharomyces cerevisiae*. *J. Biol. Chem.* 280, 437–447. doi: 10.1074/jbc.M410573200
- Tamai, Y., Momma, T., Yoshimoto, H., and Kaneko, Y. (1998). Co-existence of two types of chromosome in the bottom fermenting yeast, *Saccharomyces pastorianus*. *Yeast* 14, 923–933. doi: 10.1002/(SICI)1097-0061(199807)14:10<923::AID-YEA298>3.0.CO;2-I
- van den Broek, M., Bolat, I., Nijkamp, J. F., Ramos, E., Luttik, M. A. H., Koopman, F. et al. (2015). Chromosomal copy number variation in *Saccharomyces pastorianus* is evidence for extensive genome dynamics in industrial lager brewing strains. *Appl. Environ. Microbiol.* 81, 6253–6267. doi: 10.1128/AEM.01263-15
- van den Broek, P. J., van Leeuwen, C. C., Weusthuis, R. A., Postma, E., van Dijken, J. P., Karssies, R. H. et al. (1994). Identification of the maltose transport protein of *Saccharomyces cerevisiae*. *Biochem. Biophys. Res. Com.* 200, 45–51. doi: 10.1006/bbrc.1994.1411
- van Leeuwen, C. C. M., Weusthuis, R. A., Postma, E., van den Broek, P. J. A., and Van Dijken, J. P. (1992). Maltose proton cotransport in *Saccharomyces cerevisiae* - comparative-study with cells and plasma-membrane vesicles. *Biochem. J.* 284, 441–445. doi: 10.1042/bj2840441
- van Rossum, H. M., Kozak, B. U., Niemeijer, M. S., Duine, H. J., Luttik, M. A., Boer, V. M. et al. (2016). Alternative reactions at the interface of glycolysis and citric acid cycle in *Saccharomyces cerevisiae*. *FEMS Yeast Res.* 16:fow017. doi: 10.1093/femsyr/fow017
- Verduyn, C., Postma, E., Scheffers, W. A., and Vandijken, J. P. (1992). Effect of benzoic-acid on metabolic fluxes in yeasts - a continuous-culture study on the regulation of respiration and alcoholic fermentation. *Yeast* 8, 501–517. doi: 10.1002/yea.320080703
- Verhoeven, M. D., Lee, M., Kamoen, L., van den Broek, M., Janssen, D. B., Daran, J. G., et al. (2017). Mutations in PMR1 stimulate xylose isomerase activity and anaerobic growth on xylose of engineered *Saccharomyces cerevisiae* by influencing manganese homeostasis. *Sci. Rep.* 7:46155. doi: 10.1038/srep46155
- Vidgren, V., Huuskonen, A., Virtanen, H., Ruohonen, L., and Londesborough, J. (2009). Improved fermentation performance of a lager yeast after repair of its *AGT1* maltose and maltotriose transporter genes. *Appl. Environ. Microbiol.* 75, 2333–2345. doi: 10.1128/AEM.01558-08
- Vidgren, V., and Londesborough, J. (2012). Characterization of the *Saccharomyces bayanus*-type *AGT1* transporter of lager yeast. *J. Inst. Brew.* 118, 148–151. doi: 10.1002/jib.22
- Vidgren, V., Ruohonen, L., and Londesborough, J. (2005). Characterization and functional analysis of the *MAL* and *MPH* loci for maltose utilization in some ale and lager yeast strains. *Appl. Environ. Microbiol.* 71, 7846–7857. doi: 10.1128/AEM.71.12.7846-7857.2005
- Vidgren, V., Viljanen, K., Mattinen, L., Rautio, J., and Londesborough, J. (2014). Three *Agt1* transporters from brewer's yeasts exhibit different temperature dependencies for maltose transport over the range of brewery temperatures (0–20 degrees C). *FEMS Yeast Res.* 14, 601–613. doi: 10.1111/1567-1364.12147
- Voordeckers, K., Brown, C. A., Vanneste, K., van der Zande, E., Voet, A., Maere, S., et al. (2012). Reconstruction of ancestral metabolic enzymes reveals molecular mechanisms underlying evolutionary innovation through gene duplication. *PLoS Biol.* 10: e1001446.
- Walker, B. J., Abeel, T., Shea, T., Priest, M., Abouelliel, A., Sakthikumar, S., et al. (2014). Pilon: an integrated tool for comprehensive microbial variant detection and genome assembly improvement. *PLoS ONE* 9: e112963. doi: 10.1371/journal.pone.0112963
- Walther, A., Hesselbart, A., and Wendland, J. (2014). Genome sequence of *Saccharomyces carlsbergensis*, the world's first pure culture lager yeast. *G3* 4, 783–793. doi: 10.1534/g3.113.010090
- Waltz, E. (2016). Gene-edited CRISPR mushroom escapes US regulation. *Nature* 532:293. doi: 10.1038/nature.2016.19754
- Wilson, R. B., Davis, D., Enloe, B. M., and Mitchell, A. P. (2000). A recyclable *Candida albicans* URA3 cassette for PCR product-directed gene disruptions. *Yeast* 16, 65–70. doi: 10.1002/(SICI)1097-0061(20000115)16:1<65::AID-YEA508>3.0.CO;2-M
- Yamagishi, H., Otsuta, Y., Funahashi, W., Ogata, T., and Sakai, K. (1999). Differentiation between brewing and non-brewing yeasts using a combination of PCR and RFLP. *J. Appl. Microbiol.* 86, 505–513. doi: 10.1046/j.1365-2672.1999.00691.x
- Yamashita, I., and Fukui, S. (1985). Transcriptional control of the sporulation-specific glucoamylase gene in the yeast *Saccharomyces cerevisiae*. *Mol. Cell. Biol.* 5, 3069–3073. doi: 10.1128/MCB.5.11.3069
- Zastrow, C. R., Hollatz, C., de Araujo, P. S., and Stambuk, B. U. (2001). Maltotriose fermentation by *Saccharomyces cerevisiae*. *J. Ind. Microbiol. Biotechnol.* 27, 34–38. doi: 10.1038/sj.jim.7000158

Conflict of Interest Statement: The authors declare that the research was conducted in the absence of any commercial or financial relationships that could be construed as a potential conflict of interest.

Copyright © 2018 Brickwedde, Brouwers, van den Broek, Gallego Murillo, Fraiture, Pronk and Daran. This is an open-access article distributed under the terms of the Creative Commons Attribution License (CC BY). The use, distribution or reproduction in other forums is permitted, provided the original author(s) and the copyright owner(s) are credited and that the original publication in this journal is cited, in accordance with accepted academic practice. No use, distribution or reproduction is permitted which does not comply with these terms.