



Delft University of Technology

Amstel

Future projection

Caso, Olindo

Publication date

2019

Document Version

Final published version

Published in

Amsterdam 2050

Citation (APA)

Caso, O. (2019). Amstel: Future projection. In K. Kaan, I. Stancic, M. Triggianese, H. Smidhen, J. van Zalingen, & A. Keng Yee Oh (Eds.), *Amsterdam 2050: Complex Projects* (pp. 479-484). TU Delft OPEN Publishing.

Important note

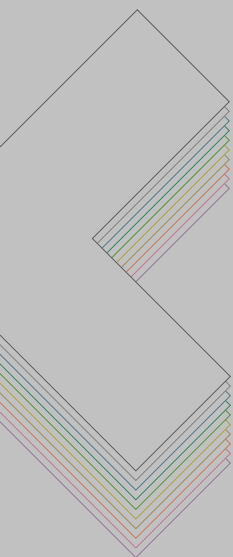
To cite this publication, please use the final published version (if applicable).
Please check the document version above.

Copyright

Other than for strictly personal use, it is not permitted to download, forward or distribute the text or part of it, without the consent of the author(s) and/or copyright holder(s), unless the work is under an open content license such as Creative Commons.

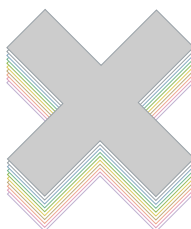
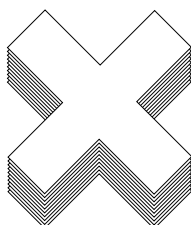
Takedown policy

Please contact us and provide details if you believe this document breaches copyrights.
We will remove access to the work immediately and investigate your claim.



AMSTERDAM **2050**

Complex Projects



AMSTERDAM

2050



Editorial Board

Kees Kaan
Ivana Stancic
Manuela Triggianese
Hrvoje Smidihien
Jelmer van Zalingen
Alexis Keng Yee Oh

Chief editor

Ivana Stancic

Texts' Authors

Complex Projects students
Hrvoje Smidihien
Ivana Stancic
Kees Kaan
Manuela Triggianese
Olindo Caso
Ruud Brouwers
Sven Jansse

Graphics' Authors

Complex Projects students
Alexis Keng Yee Oh
Hana Marissa Mohar
Maruli Heijman

Photographers

Jelmer van Zalingen
Mariapaola Michelotto
Sebastian van Damme

Cover design

Ivana Stancic
Alice Colombo

Texts' editing

Ivana Stancic
Alexis Keng Yee Oh

Graphics' editing

Alexis Keng Yee Oh
Ivana Stancic
Jelmer van Zalingen

Invited lecturers and guest critics

Arjan Snellenberg / City of Amsterdam
Arjan van Timmeren / AMS Institute
Bas Koppers / City of Amsterdam
Darrel Ronald / KCAP
Eelco Thielier / Royal Haskoning DHV
Esther Reith / City of Amsterdam
Flora Nycolaas / City of Amsterdam
Gerd Kortuem / AMS Institute
Kenneth Heijns / AMS Institute
Lars van Hoften / UNStudio
Marlies van der Maarel / City of Amsterdam
Martijn de Wit / City of Amsterdam
Maurits de Hoog / City of Amsterdam
Pieter Klomp / City of Amsterdam
Rick Vermeulen / City of Amsterdam
Sebastian Janusz / Rijnboutt
Stephan van Dijk / AMS Institute
Tamara Smit / City of Amsterdam
Tanner Merkeley / OMA
Tijs Roelofs / City of Amsterdam
Tom Kuipers / AMS Institute

With the special contribution of

KAAN Architecten

Project leaders

Hrvoje Smidihen
Manuela Triggianese

Tutors

Hrvoje Smidihen
Luc Willekens
Manuela Triggianese
Olindo Caso
Stefan de Koning
Steven Steenbruugen
Sven Jansse

Complex Projects Students**Amstel**

Agnieszka Borowska
Chenxi Dai
Hendrik Vogelpoel
Lisanne Rissik
Rosa Steenkamp
Sjoerd Boomars
Wietse Elswijk

Amsterdam Totaal

Guus van Gemert
Ines Anic
Qiongjun Hu
Roel Schiffers
Yuan Guo

Centraal

Davide Niccolini
Erik Stigter
Eva Heldeweg
Maruli Heijman
Nick Wenham
Sebastiaan van Arkel
Victor Koot
Yana Daynovich

City Islands

Dan Jing
Daphne Delissen

George Ikilikjan
Gjalt van Koten
Shushen Zhang
Wim van Heeswijk
Xiangqian Feng

Oud Zuid

Blanka Borbély
Dermot Horgan
Eldin Geldenhuys
Jingling Du
Michal Strupinski
Selene Zhuang
Yishan Du
Yucheng Wu

Sloterdijk

Boris van Hattum
Caroline van Stelten
Chunxu Jin
Floris Dreesmann
Jip Vorstermans
Leevan Huang
Rafaël Woudenberg
Steven van der Woude
Wai Loo

Schiphol Corridor

Andrew Jackson
Brygida Zawadzka
Christiaan Frankin
Daan Zandbergen
Hana Mohar
Mingru Zhuang
Peiwen Ren
René Görtz

Schiphol Terminal

Chi Hang Wong
Kasia Soltysiak
Lorraine Hooijschuur
Nick Huizenga
Sietske van der Meulen
Tom van Lint

Zaanstad

Alexis Keng Yee Oh
Andris Otisons
Cas de Heij
Charlotte Kok
Dennis Merkens
Lydia Giokari
Miaolan Lin
Petter Habostad
Yitang Meng

Zuid Oost

Anna van Oers
Duowen Chen
Eric Eisma
Lou Krabshuis
Tom Hulsman

Index

8	Book concept	231	Living future typology
11	0. INTRO	242	Work
13	Imagining Amsterdam 2050 and beyond	243	Work present typology
15	Recovering the future with architecture	251	Work Trends
23	AMS Mid-City Research	267	Work future typology
26	AMS Mid-City Methodology	278	Health
41	1. AMS PRESENT	279	Health present typology
43	Site index	287	Health Trends
45	Zaanstad	303	Health future typology
49	Centraal	314	Nature
53	City Islands	315	Nature present typology
57	Amstel	323	Nature trends
61	Sloterdijk	339	Nature future typology
65	Oud Zuid	350	Resources
69	Schiphol Corridor	351	Resources present typology
73	Zuid Oost	359	Resources trends
77	Schiphol Terminal	375	Resources future typology
82	Ams Present Mapping	386	Infrastructure
83	XL Mapping	387	Infrastructure present typology
85	L Mapping	395	Infrastructure trends
87	M Mapping	411	Infrastructure future typology
89	S Mapping	422	Mobility
91	XS Mapping	423	Mobility present typology
93	2. AMS TRENDS	431	Mobility trends
95	Location map	447	Mobility future typology
98	Lifestyle	457	3. AMS FUTURE
98	Lifestyle present typology	459	Site index
107	Lifestyle trends	461	Zaanstad
123	Lifestyle future typology	467	Centraal
134	Entertainment	473	City Islands
135	Entertainment present typology	479	Amstel
143	Entertainment trends	485	Sloterdijk
159	Entertainment future typology	491	Oud Zuid
170	Art	497	Schiphol Corridor
171	Art present typology	503	Zuid Oost
179	Art trends	509	Schiphol Terminal
195	Art future typology	515	Amsterdam Totaal
206	Living	518	Ams future mapping
207	Living present typology	519	XL Mapping
215	Living trends	521	L Mapping
		523	M Mapping
		527	S Mapping
		531	XS Mapping
		535	Materialisation Mapping

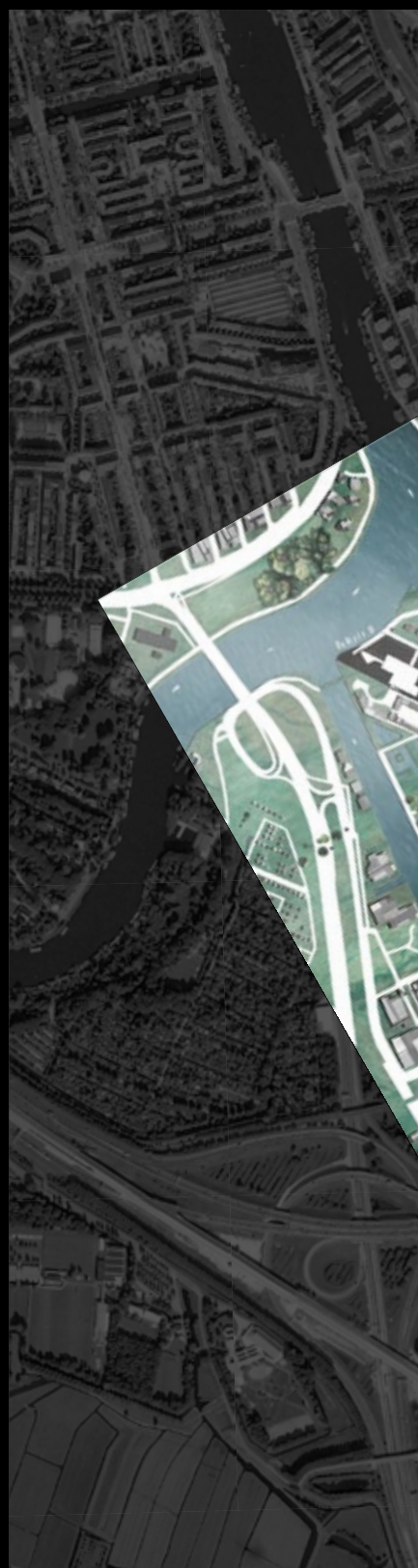
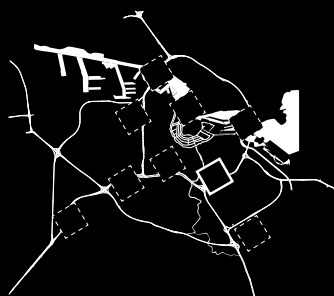
Amstel

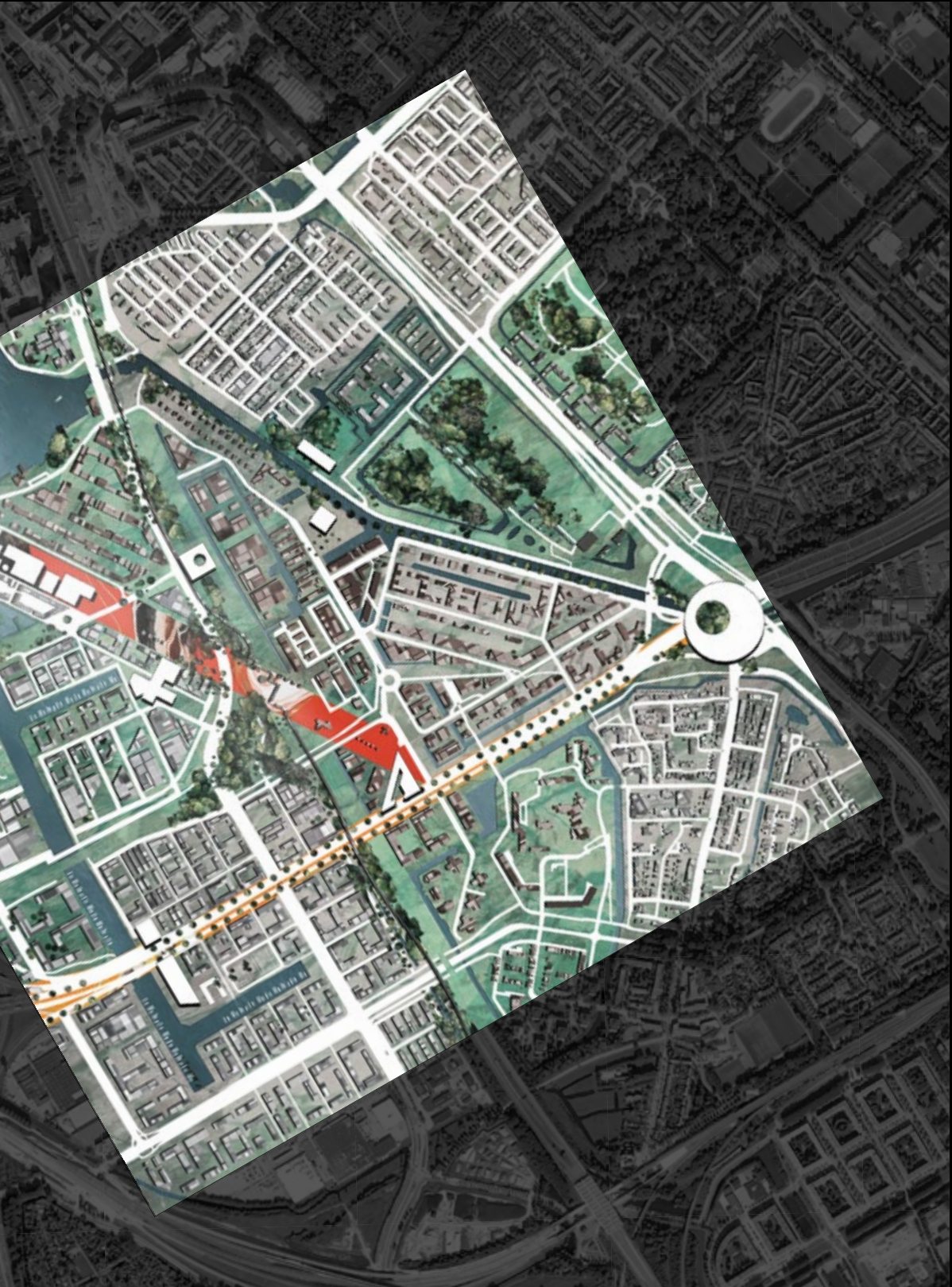
Future projection; Text by Olindo Caso

For the site of the Overamstel area, there are two goals that run in parallel: to resolve the remnants of social fragmentation from the past; and to create a local urban identity that is able to provide some level of spatial coherence as we move towards 2050. With these two goals in mind, the group adopted a strategy that encompasses four overarching themes. Mobility and infrastructure remain more urgent as there is a need to rethink, and in some cases, downgrade the services to make way for more pedestrian and bike friendly paths.

Part of the proposal calls for the removal of train traffic through the area, stopping the trains to Amstel at Duivendrecht, while allowing the metros to run unaffected. In tandem to this, the area has well-established infrastructure for production which can be supplemented by new technology in the future to support plans for densification while still maintaining its identity of being a place for production.

As the areas around the infrastructural nodes densify with living-working typologies, a unique and distinguishable perception of the site in both program and appearance will be established, creating a strong local identity currently lacking in Amstel.





Amstel

Future Model

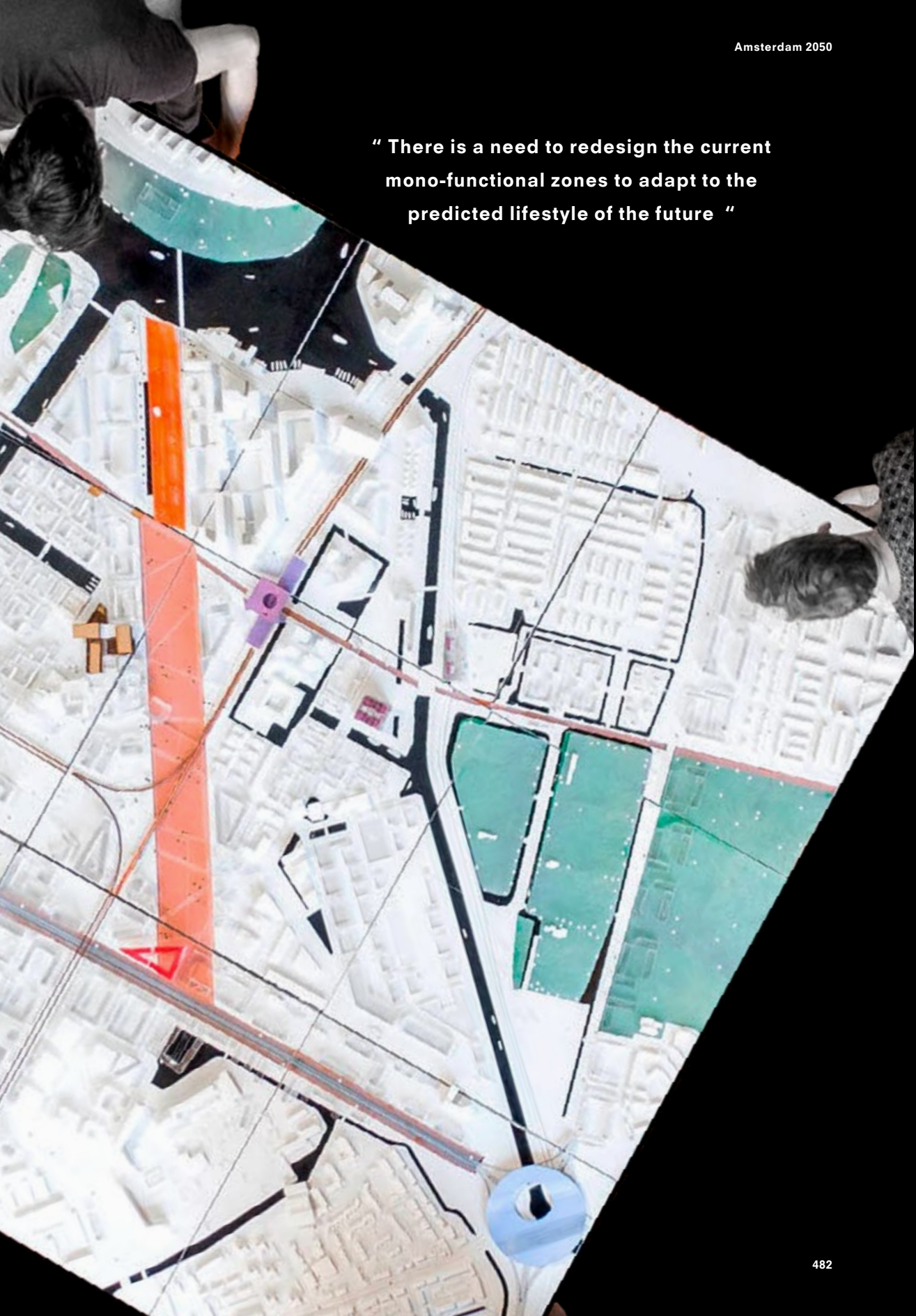
There is a need to redesign the current mono-functional zones to adapt to the predicted lifestyle of the future without completely demolishing the existing building grain. A series of interventions predominantly in the theme of health, mobility and work act as activators at key locations across the site.

The Park Diagonal – a public space that runs across the site is an exercise in adaptation, introduces an accessible public space, providing a sense of hierarchy can be discerned and with it a semblance of socio-spatial centrality needed to provide orientation in the area.

The metro station is re-centralised and merged with a maker's library and supplemented by a productive centre for healthy food and research aims to inject knowledge into daily functions. Several living-working combinations explores the potentialities of introducing creative and productive industries into living spaces, re-emphasizing production as the core of the Amstel identity.

“ A series of interventions predominantly in the theme of health, mobility and work act as activators at key locations across the site ”

“ There is a need to redesign the current mono-functional zones to adapt to the predicted lifestyle of the future ”



Amstel

The vision

A NEW WAY TO
LIVE & WORK

CREATING
CONNECTIONS

LINK THE CITY

***“ As the areas around the infrastructural nodes
density with living-working typologies, a unique and
distinguishable perception of the site in both program
and appearance will be established, creating a
strong local identity currently lacking in Amstel ”***

***“ The area has well-established infrastructure for
production which can be supplemented by new technology
in the future to support plans for densification while still
maintaining its identity of being a place for production ”***