

**Quantitative fracture imaging using least-squares migration and linear-slip model
theory and application to single-well reflection imaging**

Minato, Shohei; Ghose, Ranajit; Wapenaar, Kees

Publication date
2019

Document Version
Accepted author manuscript

Published in
Fifth EAGE Workshop on Borehole Geophysics

Citation (APA)

Minato, S., Ghose, R., & Wapenaar, K. (2019). Quantitative fracture imaging using least-squares migration and linear-slip model: theory and application to single-well reflection imaging. In *Fifth EAGE Workshop on Borehole Geophysics : 18 -20 November 2019, The Hague, Netherlands* EAGE.

Important note

To cite this publication, please use the final published version (if applicable).
Please check the document version above.

Copyright

Other than for strictly personal use, it is not permitted to download, forward or distribute the text or part of it, without the consent of the author(s) and/or copyright holder(s), unless the work is under an open content license such as Creative Commons.

Takedown policy

Please contact us and provide details if you believe this document breaches copyrights.
We will remove access to the work immediately and investigate your claim.

Quantitative reflection imaging of fractures using least-squares migration and linear-slip model: theory and numerical example for single-well reflection imaging

Shohei Minato, Delft University of Technology and OYO Corporation,
Ranajit Ghose, and Kees Wapenaar, Delft University of Technology

Summary

Characterizing subsurface fractures is a key to exploring hydrocarbon and water resources, developing geothermal field, and assessing seismic hazard in seismotectonics. Seismic characterization of fractures has been based on the seismic anisotropy using effective medium approach, which considers seismically invisible, small fractures. There is a considerable scale gap between the fracture properties obtained by seismic methods and those from borehole logging. Recent developments of single well reflection imaging show that the use of acoustic borehole logging data successfully delineates detailed structures around a borehole up to a few tens of meter away from the borehole. This shows the potential of filling the scale gap by providing quantitative fracture properties around the borehole. In the context of reflection imaging of individual fractures, we explore least-squares migration (LSM) coupling linear-slip interface model. LSM solves a linearized waveform inversion in order to estimate quantitative properties

Introduction

Recent development of single well reflection imaging using acoustic logging data shows the potential of detailed imaging of structures around a borehole. For example, dipole acoustic data successfully detect the azimuth angle of reflectors, and also images structures around a borehole a few tens of meters away from the borehole (Lee et al., 2019). This shows the potential of filling the scale gap between the surface seismic, VSP, and borehole sonic logging.

Seismic characterization of fractures is crucial for hydrocarbon exploration and geothermal field development. Characterization of fractures using seismic anisotropy is based on effective medium theory assuming seismically invisible small fractures. We argue that the use of single well reflection imaging technique with frequency range between 2kHz – 10kHz enables locating individual fractures, joints and faults around a borehole as seismically visible, thin structures. When such seismically-thin structures are treated as individual scatterers and reflectors, the linear-slip interface model (Schoenberg, 1980) is useful to relate the seismic scattering and the mechanical compliances at the thin structure. The mechanical compliances reflect the small-scale properties at the structure, e.g., surface shape, contact asperities and fracture infill materials (e.g., Worthington and Hudson, 2000). Our recent laboratory experiments (Minato et al., 2018a) successfully characterize the fluid-filled, spatially varying fracture using wave reflection and linear-slip model.

Toward quantitative, high-resolution imaging of thin structures/fractures around a borehole, in this study, we explore the potential of the least-squares migration (e.g., Chen and Sacchi, 2017, and references therein) coupled with the linear-slip interface model. The least-squares migration (LSM) solves linearized waveform inversion, and offers high-resolution, quantitative images. We show numerical modelling results considering a vertical fracture with coupling compliances, and a dipping fracture in the dipole acoustic logging geometry, in order to show the advantages of the new LSM over the conventional LSM and reverse-time migration (RTM).

Elastic least-squares migration coupling linear-slip model

The linear slip boundary condition at a horizontal fracture can be written as,

$$\Delta u_j = Z_{ij} \tau_{zi} \quad (i, j = x, y, z), \quad (1)$$

where Δu_j is a displacement discontinuity across the fracture, τ_{zi} is a traction vector acting on the fracture plane, and Z_{ij} is the fracture compliance tensor. Z_{ij} contains small-scale properties at the fracture, e.g., fracture aperture, contact asperity distribution, and elasticity of fracture infill materials (Worthington and Hudson, 2000). The simplest form of Z_{ij} is the diagonal matrix with rotational symmetry (Schoenberg, 1980), i.e., $\mathbf{Z} = \text{diag}(\eta_T, \eta_T, \eta_N)$, where η_T is the tangential compliance η_N is the normal compliance. The off-diagonal components in \mathbf{Z} or coupling compliances reflect the shape of the fracture surface, and they are sensitive to the shear-induced coupling changes (Nakagawa et al., 2000).

For high-resolution, quantitative reflection imaging we propose a new LSM coupling the linear-slip interface model by considering the linearized equation:

$$\mathbf{d} = \mathbf{L}\mathbf{m}, \quad (2)$$

where \mathbf{d} contains reflection waveform data, \mathbf{m} the fracture compliances, and \mathbf{L} a Born approximation operator. We derive equation (2) using the general formulation for the boundary integral representation of seismic wavefield including linear-slip interfaces (Wapenaar, 2007). We consider 2D problem, i.e., P-SV and SH wavefields, but an extension to 3D is straightforward. More details of equation (2) for P-SV wavefield can be found in Minato et al. (2018b). In the case of P-SV wavefield, the data vector \mathbf{d} contains a particle velocity vector (v_x and/or v_z), and the compliance matrix becomes $Z_{xx} = \eta_T$, $Z_{zz} = \eta_N$, and $Z_{xz} = Z_{zx} = \eta_C$ where η_C is the coupling compliance. For the 2D SH wavefield,

the data vector \mathbf{d} contains the horizontal particle velocity (v_y) and the fracture compliance matrix becomes a scalar function of η_T . Elastic least-squares migration (LSM) involves solving equation (2) for \mathbf{m} . In this study, we solve equation (2) in the frequency domain using the conjugate gradient method. Note that in this study we construct full matrix \mathbf{L} which requires large memory storage. It is also possible to use matrix-free approach to solve equation (2), e.g., using least-squares reverse-time migration (e.g., Chen and Sacchi, 2017).

Numerical modelling results: a vertical fracture

We first show how the proposed elastic LSM works when a vertical fracture is represented by linear-slip interface with coupling compliance. We consider the experimental configuration (Figure 1a) similar to our previous ultrasonic laboratory experiments (Minato et al., 2018a). We install two sources in order to consider uneven illumination of the fracture from sources (Figure 1a). The fracture compliance values along the fracture (Figure 1b) are taken from the laboratory experiments (Lubbe et al., 2000) assuming the relative magnitude of the coupling compliance (Nakagawa et al., 2000) to be 0.5. The example of the calculated shot gather is shown in Figure 1c where we assume the horizontal force sources, i.e., f_x in P-SV wavefield and f_y in SH wavefield.

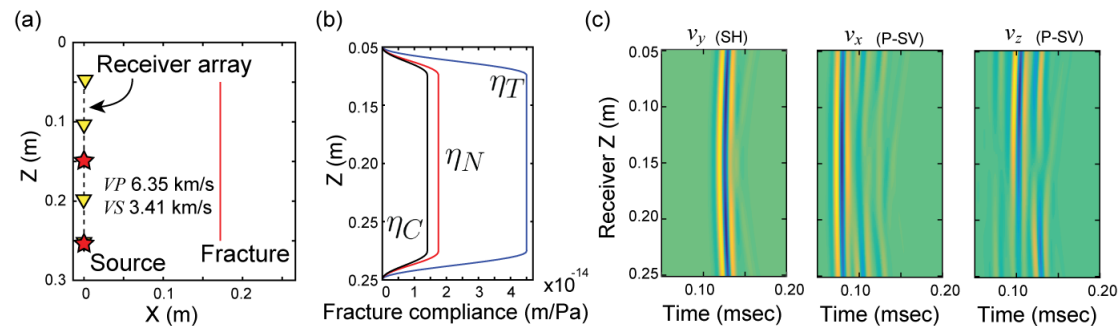


Figure 1 (a) Configuration of sources, receivers and a fracture. (b) Fracture compliances. (c) Example of modelled shot gathers.

The imaging results using SH wavefield are shown in Figure 2. Compared to the result of RTM (Figure 2a) or that using the conjugate operator $\mathbf{L}^\dagger \mathbf{d}$, the proposed LSM (Figure 2b) using the conjugate gradient method (CGLS) improves the imaging result by suppressing the migration artefacts. Furthermore, LSM estimates the quantitative values of the fracture compliance. The derived compliance (Figure 2b) is smaller than the true values and there are three main reasons; (1) Born approximation overpredicts amplitudes and underestimates compliance, (2) the conjugate gradient method estimates the fracture compliances including negative values, and (3) due to the limited bandwidth, a single interface with true compliance is represented almost equally well by multiple interfaces with smaller compliances. In order to mitigate the effect of the second reason, we constrain the solution of \mathbf{m} to be only positive compliance values in solving equation (2). To this end, we use the Krylov subspace based approach (Gazzola and Wiaux, 2018). The result (Figure 2c) shows that the additional constraint greatly improves the resolution, and consequently almost the true compliance values are obtained; the fracture is represented nearly as a single interface. Figure 2d is the imaging result using the conventional LSM for the volumetric distribution of elastic constant (μ), e.g., see Beydoun and Mendes (1989). We see that the result of the new LSM (Figure 2c) shows similar resolution to the conventional LSM (Figure 2d), which corresponds to the fact that the linear-slip interface model includes a thin layer of isotropic material in the long wavelength assumption ($\eta_T = h/\mu$, where h is the layer thickness). We conclude that in the case of SH wavefield illuminating a vertical fracture, the new LSM gives high-resolution information of the fracture compliance.

The imaging results using P-SV wavefield (Figure 3) show distinct differences between the proposed LSM (Figure 3a) and the conventional LSM (Figure 3b). This is because the coupling fracture

compliance produces converted shear waves due to normally incident P wave (Nakagawa et al., 2000), which may not be properly described by a thin layer of isotropic material. In this case, the proposed LSM gives accurate imaging results than conventional LSM, and provides detailed insights of the mechanical compliance of the fracture.

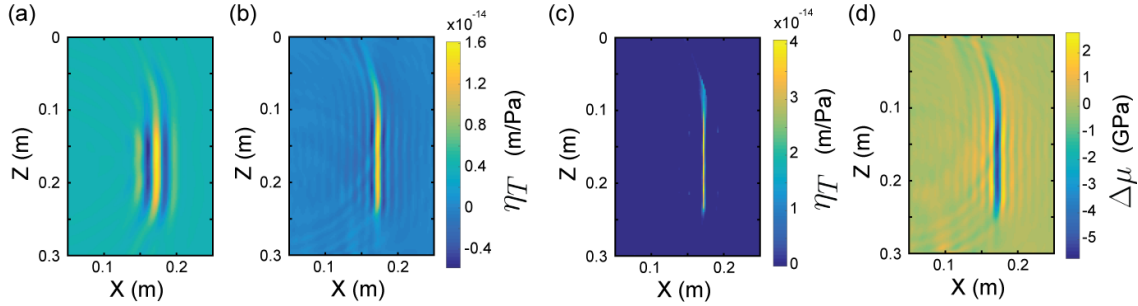


Figure 2 Imaging results for SH waves using (a) RTM, (b) proposed LSM, (c) proposed LSM with positive constraint, and (d) conventional LSM.

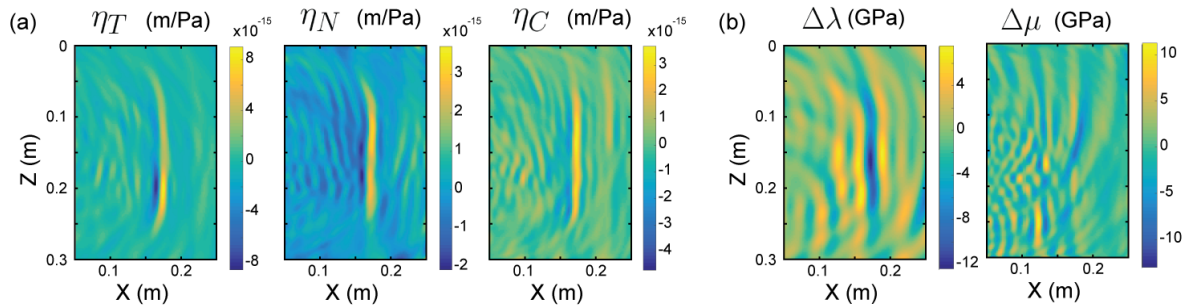
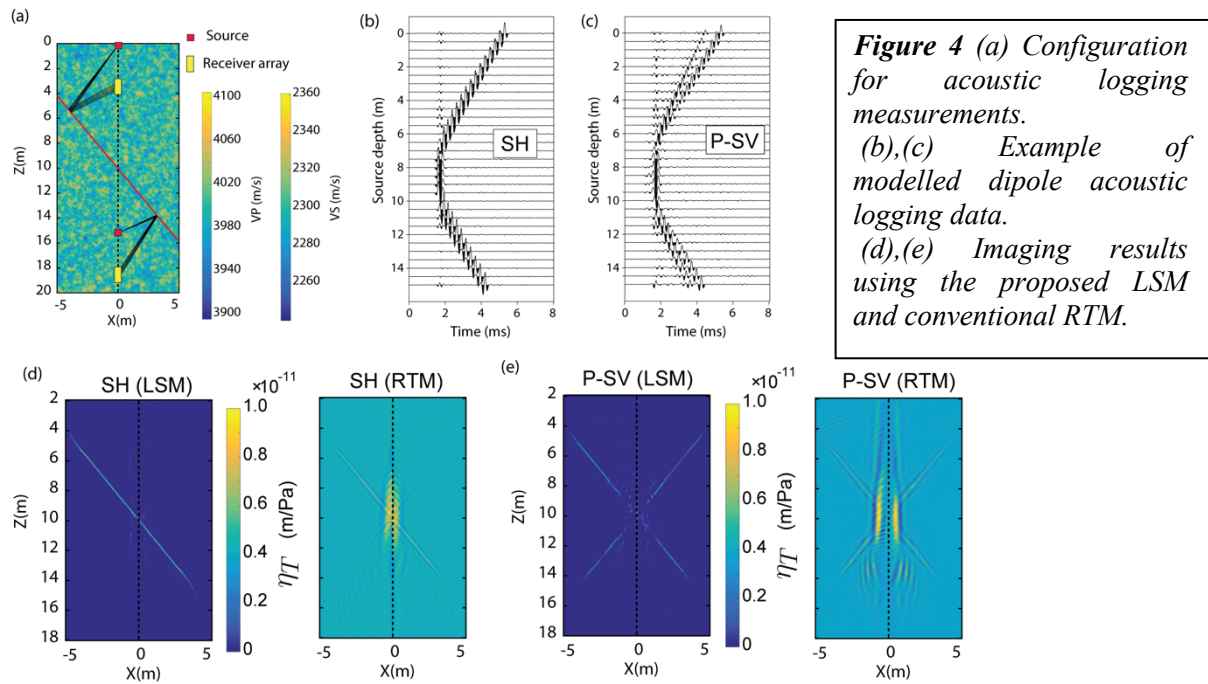


Figure 3 (a) Imaging results for P-SV waves using the proposed LSM, and (b) conventional LSM.

Numerical modelling results: Acoustic logging geometry

We consider the application of the proposed LSM to the dipole acoustic logging geometry. We consider the complex background model represented as a random velocity distribution (Figure 4a). We image a single dipping fracture intersecting the borehole. For simplicity, we ignore the effect of the presence of the fluid-filled borehole, and we assume that the data has been filtered to suppress direct body waves and borehole waves. The fracture compliance values are $\eta_T=1\times10^{-11}$ m/Pa and $\eta_N=1\times10^{-12}$ m/Pa, respectively, assuming a fluid-filled rotationally invariant fracture. The magnitude of the compliances are calculated from the scaling behaviour of fracture compliances (Hobday and Worthington, 2012). The realistic source and receiver spacing is considered; receiver array consists of 5 receivers with minimum offset 0.3 m and receiver spacing 0.15 m, and the tool moves along the borehole in steps of 0.5m (e.g., Li et al., 2017). The dominant frequency of dipole measurements is considered in the source wavelet (3 kHz). Figures 4b and 4c show the modelled pseudo dipole acoustic logging data (receiver gather); the each data are the responses of horizontal particle velocity due to horizontal force source. The response in the homogeneous medium has been subtracted in order to obtain the reflected waves. Due to the random background velocity, however, the subtraction is not perfect, and therefore the data is contaminated by the scattered waves.

We apply the proposed LSM to each dataset where Green's function in the homogeneous background medium is used for the Born operator. The results of the proposed LSM using the positive-compliance constraint (Figure 4d and 4e) show the higher resolution images than RTM, and successfully image the fracture compliances in the condition of the random background medium.



Conclusion

Towards high-resolution, quantitative imaging of fractures around a borehole, we propose the least-squares migration (LSM) coupling the linear-slip interface model. Numerical experiments show that the proposed LSM provides higher resolution images than RTM, and more accurate images than conventional LSM when a fracture is represented by coupling fracture compliance. Numerical experiments considering dipole acoustic logging geometry shows the potential of the proposed LSM to imaging fractures around a borehole.

References

- Beydoun, W. B. and Mendes, M. [1989] Elastic ray-Born 1 2-migration/inversion. *Geophysical Journal International*, **97**(1), 151–160.
- Chen, K. and Sacchi, M. D. [2017] Elastic least-squares reverse time migration via linearized elastic full-waveform inversion with pseudo-Hessian preconditioning. *Geophysics*, **82**(5), S341–S358.
- Gazzola, S. and Wiaux, Y. [2017] Fast nonnegative least squares through flexible Krylov subspaces. *SIAM Journal on Scientific Computing*, **39**, A655–A679.
- Hobday, C., and Worthington, M. [2012] Field measurements of normal and shear fracture compliance. *Geophysical Prospecting*, **60**, 488–499.
- Lee, S. Q., Tang, X. M. and Su, Y. D. [2019] Shear wave imaging to determine near-borehole faults for ocean drilling exploration. *Geophysical Journal International*, **217**, 288–293.
- Li, J., Innanen, K. A. and Tao, G. [2017] Extraction of reflected events from sonic-log waveforms using the Karhunen-Loève transform. *Geophysics*, **82**(5), D265–D277.
- Lubbe, R., Sothcott, J., Worthington, M. and McCann, C. [2008] Laboratory estimates of normal and shear fracture compliance. *Geophysical Prospecting*, **56**, 239–247.
- Minato, S., Ghose, R. and Osukuku, G. [2018a] Experimental verification of spatially varying fracture-compliance estimates obtained from amplitude variation with offset in version coupled with linear slip theory. *Geophysics*, **83**, WA1–WA8.
- Minato, S., Ghose, R. and Wapenaar, K. [2018b] Seismic modelling and inversion of nonwelded interfaces using the boundary integral equation. *Proceedings of the 13th SEGJ International Symposium*.
- Nakagawa, S., Nihei, K. and Myer, L. [2000] Shear-induced conversion of seismic waves across single fractures. *International Journal of Rock Mechanics and Mining Sciences*, **37**, 203–218.
- Schoenberg, M. [1980] Elastic wave behavior across linear slip interfaces. *The Journal of the Acoustical Society of America*, **68**, 1516–1521.
- Wapenaar, K. [2007] General representations for wavefield modeling and inversion in geophysics. *Geophysics*, **72**, SM5–SM17.
- Worthington, M. H., and Hudson, J. A. [2000] Fault properties from seismic Q. *Geophysical Journal International*, **143**, 937–944.