

Evaluating residual dyke resistance using the Random Material Point Method

Remmerswaal, Guido; Vardon, Philip J.; Hicks, Michael A.

DOI

[10.1016/j.compgeo.2021.104034](https://doi.org/10.1016/j.compgeo.2021.104034)

Publication date

2021

Document Version

Final published version

Published in

Computers and Geotechnics

Citation (APA)

Remmerswaal, G., Vardon, P. J., & Hicks, M. A. (2021). Evaluating residual dyke resistance using the Random Material Point Method. *Computers and Geotechnics*, 133, Article 104034. <https://doi.org/10.1016/j.compgeo.2021.104034>

Important note

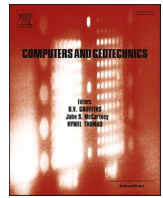
To cite this publication, please use the final published version (if applicable).
Please check the document version above.

Copyright

Other than for strictly personal use, it is not permitted to download, forward or distribute the text or part of it, without the consent of the author(s) and/or copyright holder(s), unless the work is under an open content license such as Creative Commons.

Takedown policy

Please contact us and provide details if you believe this document breaches copyrights.
We will remove access to the work immediately and investigate your claim.



Research Paper

Evaluating residual dyke resistance using the Random Material Point Method

Guido Remmerswaal, Philip J. Vardon, Michael A. Hicks^{*}

Section of Geo-Engineering, Faculty of Civil Engineering and Geosciences, Delft University of Technology, Delft, the Netherlands

ARTICLE INFO

Keywords:

Dyke
Large deformations
Random Material Point Method
Reliability analysis
Slope stability
Spatial variability

ABSTRACT

Due to a lack of large deformation dyke assessment models, primary failure mechanisms, such as inner slope failure, are often used as a proxy to assess the probability of failure of a dyke. However, a dyke continues to fulfil its main function unless, or until, flooding occurs. The Random Material Point Method (RMPM) is used here to investigate residual dyke resistance, which is the resistance against flooding after initial failure. RMPM combines random fields with MPM in a Monte Carlo simulation and has been extended here to include the effects of an external hydrostatic pressure on a dyke's outer slope. The residual resistance of an idealised dyke (computed using RMPM) is shown to reduce the probability of flooding by 25% with respect to the initial failure. A lower degree of anisotropy of the spatial variability increases the residual dyke resistance. RMPM simulates, as expected, a lower residual dyke resistance for larger initial failures and/or a higher water level. A 'safe' remaining geometry has not been found, since even small initial failures can result in an unacceptable probability of flooding, highlighting the importance of modelling the entire failure process.

1. Introduction

"What is failure of a structure?" is a simple question to ask, but can be difficult to answer in practice. Failure of a structure is defined as the structure becoming unfit for service, which either means a loss of safety under extreme circumstances, i.e. the Ultimate Limit State (ULS), or a loss of function under normal circumstances, i.e. the Serviceability Limit State (SLS) (ASCE, 2005; CEN, 2002). To define ULSs and SLSs for a flood protection structure, the consequences of flooding must be considered. Indeed, the potential damage to the flood protection itself is usually insignificant in comparison. So, while the Eurocode defines a loss of equilibrium of the structure or significant damage to the structure as ULS failure, for flood protections in particular, a loss of equilibrium or significant deformation can be accepted so long as the structure retains its primary function, i.e. preventing flooding of the hinterland (CEN, 2002, 2004). In such circumstances, a loss of equilibrium and/or significant deformation of a flood protection can be considered as SLS failure.

In the Netherlands, the Water Law (Waterwet, 2009) has defined ULS dyke failure as flooding. Therefore, for reliability assessments, the probability of ULS failure of a dyke is given by the probability of

flooding. For most failure processes, the initiation of the mechanism is generally considered by guidelines to always lead to flooding (MIM, 2017a). For example, to determine the probability of flooding due to inner slope failure, i.e. failure of the landward slope of the dyke, the loss of equilibrium is usually considered as the limit state. However, several theoretical case studies and dyke failure tests have shown that after macro-instability flooding can still be prevented, i.e. residual dyke resistance, or 'reststerkte' in Dutch, was available (ENW, 2009; van Montfoort, 2018; 't Hart et al., 2016; Klein Breteler et al., 2009). For other mechanisms, such as (wave) overtopping or piping, residual dyke resistance is also often available (Calle, 2002). Hence, including this additional resistance can lead to more efficient designs, and to dyke reinforcement taking place only where it is most necessary.

Some guidelines acknowledge the existence of residual dyke resistance and propose methods to include this additional resistance, especially for wide dykes, i.e. dykes where the critical failure surface only affects either the inner berm or slope, and dykes with a large foreland (Blinde et al., 2018; ENW, 2009; MIM, 2016). Almost all of these methods reduce the probability of flooding (or increase the factor of safety) compared to the probability of inner slope instability based upon the remaining dyke geometry. However, since existing methods for the assessment of inner slope instability, for example the Limit Equilibrium

^{*} Corresponding author at: Section of Geo-Engineering, Faculty of Civil Engineering and Geosciences, Delft University of Technology, PO Box 5048, 2600 GA Delft, The Netherlands.

E-mail address: m.a.hicks@tudelft.nl (M.A. Hicks).

<https://doi.org/10.1016/j.compgeo.2021.104034>

Notation*Abbreviations*

DM-G	Double Mapping using GIMP shape functions
FEM	Finite Element Method
FOS	Factor of Safety
GIMP	Generalized Interpolation Material Point
LEM	Limit Equilibrium Method
MPM	Material Point Method
MPs	Material Points
PF	Proximity Field
PFM	Proximity Field Method
RFEM	Random Finite Element Method
RMPM	Random Material Point Method
SLS	Serviceability Limit State
ULS	Ultimate Limit State

Latin symbols

C	Polynomial boundary segments set
C_i	One of the sets required for boundary
c_i	Initial undrained shear strength
c_r	Residual undrained shear strength
$C(F)$	Consequence of failure
D	Geometric uncertainty
E	Young's Modulus
h	External water level
H	Dyke height
H_i	Initial height
H_r	Residual dyke height
H_s	Softening modulus
L	Load
M	Model uncertainty
N	Number of realisations
$N_F(t)$	Number of realisations with flooding before t
$N_{s_1}(t)$	Number of realisations with initial failure before t
$P(F)$	Probability of failure
$P(F h)$	Fragility curve of probability of flooding

$P(X)$	Probability of event X
$P(X Y)$	Probability of event X given Y
P_s	Maximum probability of flooding
Q	Material (quantity) uncertainty
R	Resistance
$Risk(F)$	Risk of failure
S	Failure process
S_i	Failure mechanism
S^c	Critical failure process
S_i^c	Critical failure mechanism
t	Time
t_{max}	Maximum simulation time
t_F	Time of flooding
t_{s_1}	Time of initial failure
V	Coefficient of variation
W	Dyke width (at water level)
W_c	Crest width
W_i	Initial dyke width
W_r	Residual dyke width
W_{s_1}	Dyke width after initial failure
x	Horizontal coordinate
y	Vertical coordinate
Z	Limit state function

Greek symbols

γ	Unit weight
θ_h	Horizontal scale of fluctuation
θ_v	Vertical scale of fluctuation
μ	Mean
μ_{ci}	Mean c_i
μ_{cr}	Mean c_r
ν	Poisson's ratio
σ	Standard deviation
σ_{ci}	Standard deviation of c_i
σ_{cr}	Standard deviation of c_r

Method (LEM) or Finite Element Method (FEM), generally stop at the start of failure, both the remaining geometry and potential secondary mechanisms are evaluated based on crude approximations. This paper further develops the understanding of, and modelling capabilities for, the failure processes using the Material Point Method (MPM), a tool that is able to model the entire failure process. MPM is a large deformation variant of FEM, that makes use of both a material point discretisation for storing the information of the material and a mesh discretisation on which the governing equations are solved. MPM has been used to model large deformations for a range of geotechnical applications (Andersen

et al., 2010; Fern et al., 2019; Martinelli et al., 2017; Phuong et al., 2016; Wang, et al., 2016b), and is able to model the entire dyke failure process, from initial macro-instability to flooding (Fern et al., 2017; Leclercq, 2020; Zabala and Alonso, 2011; Zuada Coelho et al., 2019).

A further consideration in dyke stability assessments is the variability of soil properties, which can have a large impact on the likelihood of initial failure as well as on the failure process. The Random Finite Element Method (RFEM) combines random fields, for modelling the spatial variability of soil properties, with FEM, and has been used successfully to quantify the impact of variability of soil properties on the

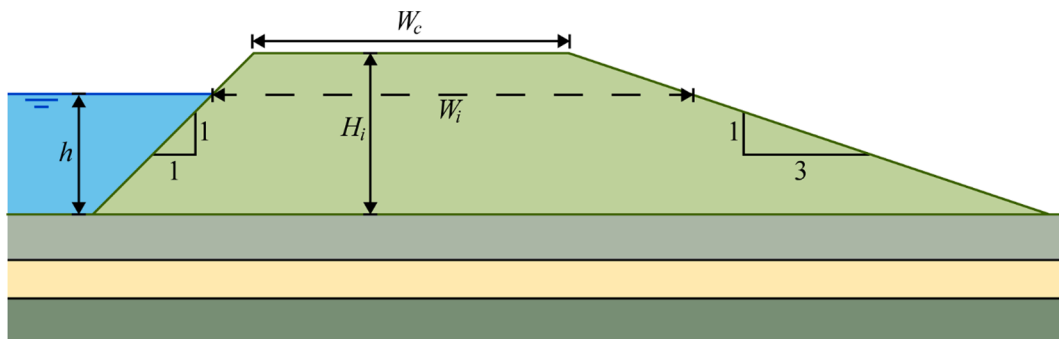


Fig. 1. Dyke geometry, with water level h , original dyke height H_i , crest width W_c , dyke width at water level W_i , outer slope of 1:1 and inner slope of 1:3.

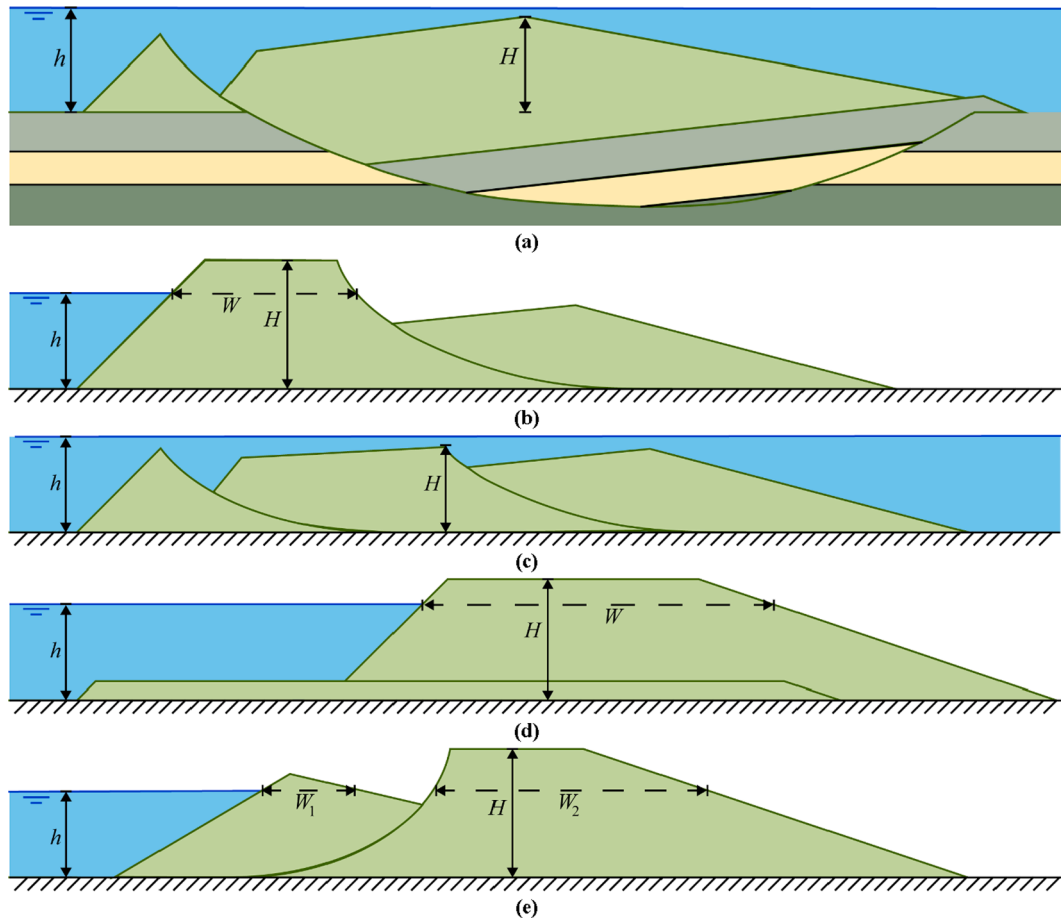


Fig. 2. Dyke failure process for macro-instability: a) deep rotational slide, which causes flooding ($H < h$, $W = 0$); b) rotational initial failure ($H \approx H_b$, $W < W_b$); c) retrogressive failure, which causes flooding ($H < h$, $W = 0$); d) horizontal sliding failure ($H \approx H_b$, $W \approx W_b$); e) outward rotational failure ($H \approx H_b$, $W = W_1 + W_2 < W_i$ or $W = W_1 + W_2 > W_i$); based on Calle (2002) and 't Hart et al. (2016).

probability and geometry of inner slope instability (Griffiths & Fenton, 2004; Hicks & Li, 2018; Hicks & Samy, 2002; Hicks & Spencer, 2010; van den Eijnden & Hicks, 2018). Similarly, the Random Material Point Method (RMPM) combines random fields with MPM to investigate the impact of spatial variability on the entire failure process. This paper extends the implementation of RMPM, as presented in Wang et al. (2016a) and Remmerswaal et al. (2019b), to make it applicable to dyke safety assessments incorporating residual strength.

Section 2 describes an idealised dyke cross-section that has been used throughout the paper to demonstrate the approach. In Section 3, a probabilistic framework is presented for assessing residual dyke resistance, and this framework is implemented using RMPM in Section 4. Sections 5 and 6 present a parametric investigation into the probability of initial failure and subsequent flooding.

2. Example dyke

An idealised dyke cross-section is used throughout, to demonstrate the capabilities of the method. The dyke, shown in Fig. 1, has an initial height $H_i = 5$ m, an inner (right-hand-side) slope of 1 in 3 and an outer (left-hand-side) slope of 1 in 1. The outer slope angle is steeper than that of a usual dyke, in order to increase the necessity of an external water load on the outer slope for maintaining stability and thereby test the veracity of the external loading implementation. In addition, the width of the crest $W_c = 10$ m is relatively large in order to more fully explore the effect of residual dyke resistance. The water level h is varied and the dyke is underlain by additional soil layers.

Fig. 2 shows potential failure mechanisms related to macro-

instability. A deep rotational slide is shown in Fig. 2a, where flooding occurs immediately. Deep slides usually result in limited residual dyke resistance, due to the size of the failure. Conversely, residual dyke resistance is usually seen when the dyke is founded on a stiff layer (as shown in Fig. 2b-e). In this case, a shallow rotational slide (as shown in Fig. 2b) causes a reduction of the width of the dyke W (defined at the water level), while the maximum height of the dyke H remains unchanged. A rotational slide can be followed by a retrogressive failure (Fig. 2c), which may or may not result in flooding. Multiple successive retrogressive failures can also lead to flooding. The external water loading can also push the entire dyke section sideways to cause a horizontal sliding mechanism (Fig. 2d). The height of the dyke tends to slowly decrease during such a slide, while the width stays more or less constant. In the longitudinal direction of the dyke, a horizontal slide may only occur along a small stretch, so that water may flow through a gap created by the slide. However, since the simulations performed here are 2 dimensional, this 3-dimensional effect is neglected. Finally, especially for lower water levels, failure of the outer slope may occur, see Fig. 2e, after which retrogressive failure in the opposite direction is possible. Combinations of the previously mentioned failure mechanisms may also occur; for example, a horizontal sliding mechanism after inner or outer slope instability.

3. Risk framework

To design or assess dykes in a risk based framework, both the probability of failure $P(F)$ of a dyke and the consequence of failure $C(F)$ are required, since the risk of failure is defined as

$$\text{Risk}(F) = P(F) \cdot C(F) \quad (1)$$

Since flooding is usually considered as the dominant limit state for dykes, the probability of flooding and the consequence of flooding should be considered. This paper focuses on computing the probability of flooding, since the consequence of flooding is often included separately in safety standards. Therefore, a maximum allowable probability of flooding P_s , based upon the minimisation of the combined cost of dyke reinforcement and the consequence of flooding, is defined:

$$P(F) \leq P_s \quad (2)$$

The major failure categories of a dyke are considered to be overtopping, piping, macro-instability of the inner slope, damage to the cover of the outer slope and failure of structures which are part of the dyke (MIM, 2017b). Assuming, conservatively, that all failure categories are mutually exclusive, the probability of flooding can be computed by summing up the probability of occurrence of the failure categories. Herein, to demonstrate MPM, only macro-instability is considered, although the risk framework concepts can be extended to other failure categories.

A limit state function Z can be defined, by considering the resistance against failure R and the loads triggering failure L (Schneider, 2006). Hence, for failure to occur,

$$Z = R - L < 0 \quad (3)$$

so that the probability of flooding becomes

$$P(F) = P(R < L) = P(Z < 0) \quad (4)$$

R and L are modelled and/or measured, and both may contain model uncertainty (M), material (or 'quantity') uncertainty (Q) and geometric uncertainty (D), i.e.

$$R = R(M_R, Q_R, D_R) \text{ and } L = L(M_L, Q_L, D_L) \quad (5)$$

The material uncertainty can be further split into measurement uncertainty and transformation uncertainty where indirect measurements are taken. In addition, the resistance and loads may be functions or models that are dependent on further variables, each of which may have further uncertainties. Combining Eq. (3) and Eq. (5), Z becomes a function of all the uncertainties:

$$Z = Z(M_R, Q_R, D_R, M_L, Q_L, D_L) \quad (6)$$

Geometric uncertainties D_R and D_L tend to be limited, due to the relatively high measurement accuracy, and are, from here on, considered to be negligible (see Varkey et al. (2021) for an investigation of the relative importance of geometric uncertainties in dyke assessments). Moreover, model uncertainties are ignored, since they have not yet been established for MPM. Hence, this paper focusses on uncertainties relating the spatial variability of material properties and uncertainties relating to the external loading (due to the external water level), i.e. Q_R and Q_L , respectively.

The limit state function Z for macro-instability, and most dyke failure categories, is usually defined according to a loss of equilibrium, i.e. the start of slope instability, for which the resistance R and load L can be determined using for example LEM or FEM. However, to include residual dyke resistance, the process from slope instability to flooding should be evaluated, and Z must be defined accordingly.

A series of events leading to a flood always ends with a breach event, i.e. erosion of the dyke by flowing water (Calle, 2002). This occurs once the maximum height of the dyke drops below the external water level. Therefore, the limit state function Z can be defined as

$$Z = H - h \quad (7)$$

where the dyke height H can be seen as the resistance R against flooding and the water level h as the load L . The probability of flooding is

therefore given by

$$P(F) = P(Z < 0) = P(H - h < 0) \quad (8)$$

After a primary macro-instability failure, flooding may occur directly (Fig. 2a) or by way of secondary mechanisms; e.g. retrogressive failure (Fig. 2c), internal erosion (i.e. micro-instability), or wave-overtopping. For simplicity, in this paper the occurrence of wave-overtopping or internal erosion after macro-instability are not considered, and only retrogressive failure, the secondary mechanism most closely related to the primary mechanism, is considered.

Considering an uncertain water level h , Eq. (8) may be expanded using fragility curves, i.e. probabilities of flooding given a specific water level $P(F|h)$ (Simm et al., 2009), such that

$$P(F) = \int P(F|h)f(h)dh = \int P(H - h < 0|h)f(h)dh \quad (9)$$

where $f(h)$ is the probability density function of h given the hydraulic conditions imposed on the dyke, i.e. all conditions influencing the external water level, such as wind, upstream conditions, tidal currents, and so on. The integral can be numerically approximated from the calculation of discrete values and interpolation, i.e. the probability of flooding can be computed separately for specific water levels, weighted using the likelihood of the water levels, and then summed across the water levels.

By evaluating all possible macro instability events, the probability of flooding given a specific water level can be evaluated as

$$P(F|h) = \int P(H - h < 0|S, h)P(S|h)dS \quad (10)$$

where S is one of the possible failure processes, which may or may not lead to flooding. Each failure process S may be split into a sequence of separate failure mechanisms, starting with an intact dyke S_0 affected by a primary macro-instability failure S_1 , followed by a potentially infinite number of successive failures $S_2 \dots S_\infty$.

In recent research (van der Krogt et al., 2019), Eq. (10) has been evaluated assuming that the probability of flooding can be computed by following the most critical failure process S^c , i.e. only evaluating the most likely failure mechanisms $S_1^c \dots S_k^c$ using LEM. This assumes that the sequence of critical failure mechanisms is a good representation of all possible failure mechanisms and thereby the probability of flooding. However, sub-critical failure mechanisms might have a larger probability of flooding, as the failure mechanisms may be larger, reducing residual dyke resistance (van der Krogt et al., 2019). In some cases, a sub-critical primary failure mechanism might even lead to flooding directly. To avoid assuming critical failure mechanisms, Eq. (10) is here modelled completely, i.e. all possible failure mechanisms are considered.

4. Modelling method (RMPM)

The entire failure process is here modelled using the Material Point Method (MPM). Spatial variability of the material properties is considered by way of random fields, and an ensemble approach is utilised such that uncertainties are included via use of the Monte Carlo Method, resulting in the so-called Random MPM (RMPM).

4.1. Material Point Method

MPM was proposed by Sulsky et al. (1994) as an extension of the Particle in Cell method, and can also be considered an extension of the Finite Element Method (FEM). In this method, the integration (sampling) points are replaced by material points (MPs) which can move freely through the background grid. MPM can model large deformations and strains, without encountering the mesh distortion problems associated with FEM. Wang et al. (2016b) showed the method to be capable

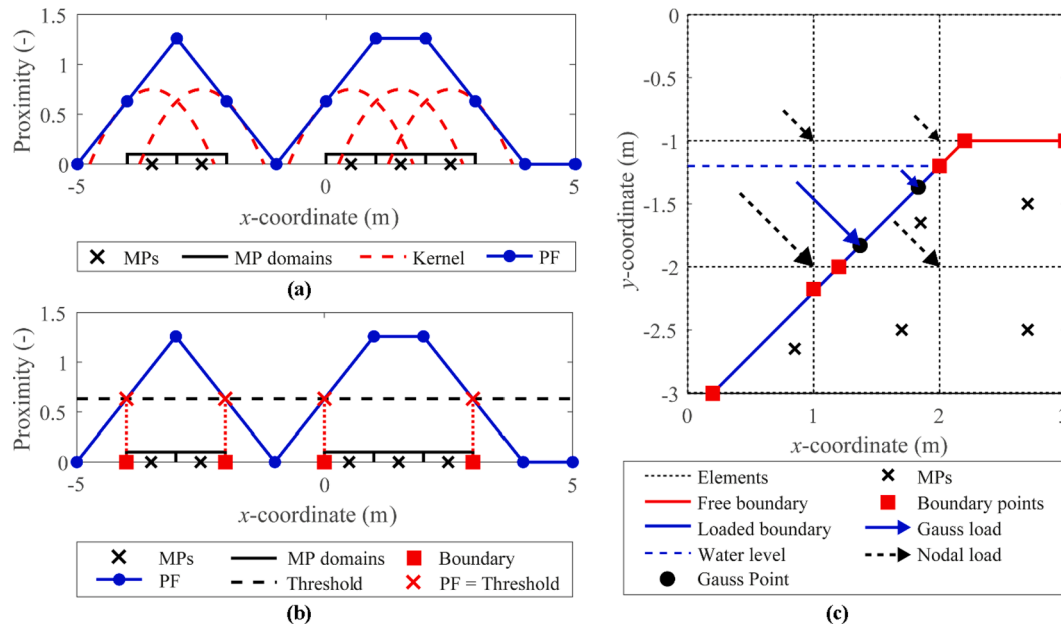


Fig. 3. a) 1D example of construction of PF using kernel functions. b) 1D example of boundary detection by comparing PF with a threshold. c) 2D example of the detected boundary with the PFM, and application of hydrostatic pressure to one boundary segment via Gauss point integration and the corresponding conversion to nodal loads.

of modelling retrogressive failure, similar to the failure process observed in dykes, in (shear) strain softening clay materials. In this study, a single phase, total stress, plane strain MPM is used. The undrained shear strength softening model described by Wang et al. (2016c) is used to represent strength reduction due to pore pressure build up during failure.

Implicit MPM is used, so that larger time steps can be used to reduce the computation time (Wang et al., 2016c). In the standard MPM formulation, stress oscillations occur as MPs move through the mesh and especially when they cross element boundaries. In order to limit such oscillations, the DM-G technique has been used in this paper (González Acosta et al., 2020, 2021). This method uses extended shape functions (and shape function gradients) to reduce the cell crossing error, as well as FEM Gauss point stiffness integration to reduce the error due to movement within the background grid cells. The Gauss point properties are acquired by the mapping of material point properties via the background grid nodes.

4.2. Random Fields

Random fields are used to model the spatial variability of soil properties, and have herein been generated using Local Average Sub-division (Fenton & Vanmarcke, 1990). The random field values are mapped onto the MPs in their initial positions at the start of the analysis, and the material properties of each MP remain constant throughout a single realisation. Spatial variability has only been considered for the shear strength properties of the material, with all other material properties being assumed deterministic. Specifically, the initial and residual undrained shear strengths, c_i and c_r , respectively, are considered to be spatially variable. They are assumed to be fully correlated, so that the spatial variability of both properties can be constructed from a single random field. Partially correlated random fields for different properties are also possible (e.g. Vardon et al., 2016), but are not considered here for reasons of simplicity.

The spatial variability is defined by the point statistics, i.e. the mean μ and standard deviation σ , and by the spatial statistics, i.e. the horizontal and vertical scales of fluctuation, θ_h and θ_v , respectively. The point statistics of the initial and residual undrained shear strengths, μ_{ci} , σ_{ci} and μ_{cr} , σ_{cr} respectively, are different, whereas the same scales of

fluctuation have been assumed for both properties.

4.3. External water load

Applying boundary conditions is a relatively simple task when the nodes of the mesh coincide with the material boundary. However, the application of external loads in MPM is more difficult, since the location of the boundary is (in general) not known a priori (Bing et al., 2019; Cortis et al., 2018; Remmerswaal, 2017). As the boundary represents the surface (or edge) of the material and the outer layer of MPs are, by definition, locally at the centre of the material they represent, the boundary cannot simply pass through the outer layer of MPs. Hence, the boundary of the dyke must be located outside the MPs, and herein it is located using boundary detection (Remmerswaal, 2017).

4.3.1. Boundary detection

The boundary is detected using the Proximity Field Method (PFM) (Remmerswaal, 2017; Remmerswaal et al., 2019a). PFM, which is based on the level set method, assigns kernel functions to each MP to represent its influence domain (Sethian, 1996). The standard level set method describes the boundary location as the zero level set of an auxiliary field (Sethian, 1996). Here, the proximity, i.e. distance, to nearby MPs is used as the auxiliary field. This proximity field (PF) is created by summing the kernel functions assigned to the MPs, where each kernel function represents the proximity to its MP, see Fig. 3a. The PF is evaluated only at the background grid nodes, by summing the kernel functions at each node as shown in Fig. 3a. The standard level set method would define the boundary as the zero level of the PF. However, for a smoother boundary a higher threshold is beneficial. Therefore, the boundary is located by determining the locations on the grid edges where the PF is equal to a threshold value, i.e. points belonging to the boundary are determined (Fig. 3b).

The size of the kernel functions is generally larger than the material volume they represent, so as to facilitate a smooth boundary. In this paper, Epanechnikov (parabolic) kernel functions have been chosen (Fig. 3a), which have a circular basis in the initial position in 2 dimensions. The strains of the MPs can be used to transform the circular kernel functions into ellipsoids to improve the boundary detection (Remmerswaal, 2017), but this has not been used here.

In 1 dimension, the boundary points are the boundary; i.e. they denote the 2 ends of each 1D domain as illustrated for the 2 1D domains in Fig. 3b. In 2 dimensions, the complete boundary is created by connecting the points using Composite Bézier Curves; i.e. a set of connected polynomial boundary segments C contained within background grid cells (Fig. 3c). Multiple sets (C_1 until C_m) might be needed if the dyke splits into multiple pieces or holes occur within the dyke after deformation. Here linear boundary segments are used, which usually give a good representation if the mesh discretisation is small compared to the size of the dyke (Fig. 3c).

4.3.2. Application of external load

Hydrostatic pressure is applied on the boundary segments from left to right, i.e. from the outer side towards the inner side of the dyke, until one segment is above (or partially above) the water level (Fig. 3c). Gauss integration is used along the segments to integrate the hydrostatic pressure (Bing, 2017; Bing et al., 2019; Remmerswaal, 2017), as illustrated in Fig. 3c for one segment (which extends from $y = -2$ m to $y = -1.2$ m). The hydrostatic pressure and the direction of the applied pressure at the Gauss point are computed using the depth below the water level and the direction normal to the boundary, respectively. Gauss integration along the boundary allows the pressure to be converted to external nodal loads.

4.4. Detection of S_i and F from residual dyke geometry

In each time step, the external geometry is determined using the boundary detection method. Two values are extracted; namely, the width W and height H , as shown in Fig. 2. H is the maximum height of the dyke, whereas W is the width of the dyke at the water level h . $H(t)$ and $W(t)$ are used to detect the moments when the initial failure mechanism S_1 and flooding F occur. After an initial slide, W will be smaller than the original width of the dyke, i.e. $W < W_i$ as shown in Fig. 2a and 2b. Moreover, W decreases to 0 and $H < h$ when flooding occurs (Fig. 2c). The residual width W_r and residual height H_r are the width and height at the end of the simulation. The probability of S_1 with a time of failure (t_{S_1}) before a time t can be computed from the realisations in a Monte Carlo simulation, i.e.

$$P(S_1|h, t_{S_1} < t) \approx \frac{N_{S_1}(t)}{N} = \frac{N_{W(t) < W_i}}{N} \quad (11)$$

where $N_{S_1}(t) = N_{W(t) < W_i}$ is the number of realisations where an initial failure mechanism has occurred before time t and N is the total number of realisations. Similarly, the probability of flooding with a time of flooding (t_F) before t is computed as

$$P(F|h, t_F < t) \approx \frac{N_F(t)}{N} = \frac{N_{H(t) < h}}{N} \quad (12)$$

where $N_F(t) = N_{H(t) < h}$ is the number of realisations in which flooding occurred before t .

5. Analyses

The dyke presented in Section 2 has been simulated. A weak strain softening clay, with a mean initial undrained shear strength μ_{ci} of 13 kPa and a mean residual undrained shear strength μ_{cr} of 5 kPa, is used as the dyke material. These material properties were chosen to represent a dyke with a relatively high probability of failure, in order to enable reasonably quantitative results within a manageable number of realisations for investigating the deformation processes during dyke failure. For the efficient computation of smaller, more realistic, probabilities of initial failure and flooding, RMPM can be combined with subset-simulation as has already been done successfully with RFEM (van den Eijnden & Hicks, 2017).

The point statistics of c_i and c_r are assumed to be normally distributed

Table 1

Model details.

Geometry	Discretisation	Material properties	
$H_i = 5$ m	$\Delta t = 0.01$ s	$\gamma = 15$ kN/m ³	$c_i = N(\mu_{ci} = 13$ kPa, $V = 0.2)$
$W_c = 10$ m	$t_{max} = 40$ s	$E = 1000$ kPa	$c_r = N(\mu_{cr} = 5$ kPa, $V = 0.2)$
Inner slope 1:3	$\Delta x = \Delta y = 0.25$ m	$\nu = 0.45$	$\theta_v = 0.5$ m
Outer slope 1:1	Number of MPs = 6400	$H_s = -50$ kPa	$0.5 < \theta_h < 48.0$ m

Table 2

Summary of analyses.

Analysis 1: Base Case	
$\theta_h = 24.0$ m	$H_i - h = 0.25$ m
Analysis Set 2: Horizontal scale of fluctuation	
$\theta_h = 0.5, 1.0, 2.0, 4.0, 8.0, 12.0, 24.0, 48.0$ m	$H_i - h = 0.25$ m
Analysis Set 3: Water level	
$\theta_h = 24.0$ m	$H_i - h = 0.25, 0.5, 1.0, 1.5, 2.0$ m

with a coefficient of variation of $V = \sigma/\mu = 0.2$ for both properties. The vertical scale of fluctuation is $\theta_v = 0.5$ m and is similar to the range of values reported in de Gast et al. (2017), whereas a horizontal scale of fluctuation of $\theta_h = 24.0$ m has been assumed for the Base Case (Analysis 1). Due to the uncertainty that is generally associated with determining horizontal scales of fluctuation, the influence of θ_h is investigated in Analysis Set 2, with θ_h being varied from 0.5 m (the isotropic case) to 48 m, the latter representing a layered system with a θ_h larger than the width of the dyke.

The unit weight of the dyke clay γ is 15 kN/m³ and the elastic properties have been chosen in order to increase the efficiency of the MPM calculations, i.e. $E = 1000$ kPa and $\nu = 0.45$, since MPM simulations converge more slowly with less compressible materials. The softening modulus of the undrained shear strength is $H_s = -50$ kPa. For Analysis 1 and Analysis Set 2, the water level is constant at $h = 4.75$ m (i.e. 0.25 m below the dyke crest), whereas the effect of lower water levels is investigated in Analysis Set 3, for water levels varying from 0.25 m to 2 m below the crest. A summary of the model details and the performed analyses are provided in Table 1 and Table 2, respectively.

A mesh of 4 noded square elements and an element size $\Delta x = \Delta y$ of 0.25 m is used, together with 4 equally spaced MPs per element (giving 6400 MPs in total). Along the sloping faces of the dyke, the number of MPs per element is adjusted and the MPs redistributed, in order to match the geometry. The nodes along the bottom boundary are completely fixed, so as to model a dyke resting on a firm foundation (as illustrated in Fig. 2b to 2e). The random field is generated with a cell size corresponding to the material point domain, i.e. $\frac{1}{2}\Delta x$ by $\frac{1}{2}\Delta y$, such that the properties of a single cell correspond to one material point. Hence, as the random field cell size is 4 times smaller than the smallest scale of fluctuation (i.e. θ_v), the spatial variability is adequately captured (see, for example, Huang & Griffiths (2015)).

The time step Δt is 0.01 s, which is significantly larger than would have been required using explicit MPM (González Acosta et al., 2020, 2021). The maximum simulation time t_{max} is 40 s. The in-situ stresses are generated quasi-statically using gravity loading, assuming an elastic material, whereas plasticity and dynamics are considered during the simulation itself. At the start of the simulation, the plasticity generates unbalanced forces at the nodes, which may lead to an initial failure. To reduce the vibrations caused by suddenly switching on plasticity at the start of the simulation, damping is used. The unbalanced forces are artificially reduced (damped) by 100% at the start and then gradually increased until they have been fully applied after 1 s; thereafter, no damping is used. The realisation is terminated if (a) flooding occurs, (b) the dyke does not fail at all, or (c) the dyke, having experienced slope

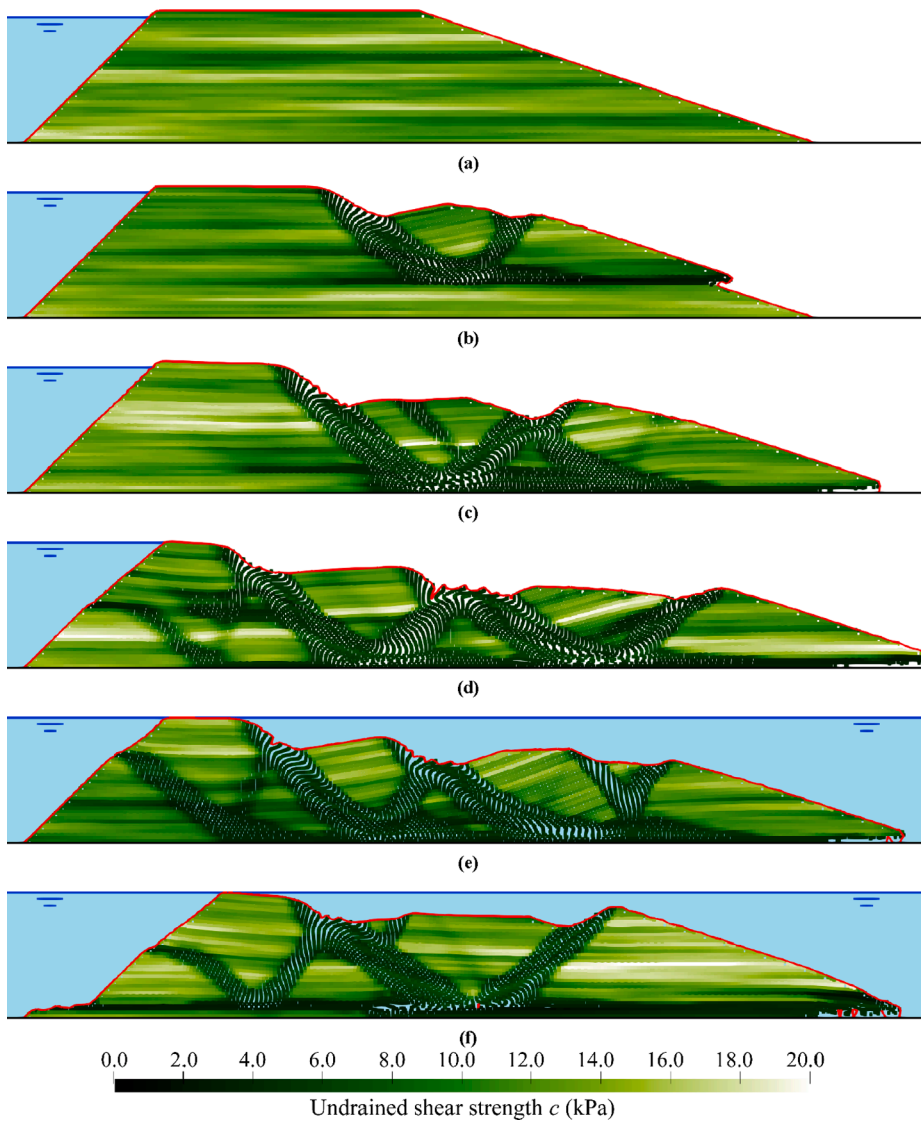


Fig. 4. RMPM realisations from Analysis 1 showing the final deformed position, with material points coloured according to the undrained shear strength (c): a) no initial failure; b) initial failure through weak zone above the foundation; c) initial failure along foundation layer; d) retrogressive failure without flooding; e) retrogressive failure with flooding; f) initial (circular) failure mechanism followed by horizontal slide triggering flooding. The red line is the detected boundary and the black line is the fixed boundary. The water level is indicatively shown.

failure, no longer moves and no longer develops plastic strains (for at least 1 s).

Each simulation comprises 10 000 realisations, which have been performed in parallel on a new grid computing system called Spider, at SURFsara, a national computing centre in the Netherlands. This number is higher than for typical RFEM simulations, due to the greater range of possible failure mechanisms arising from the evolving failure process being modelled in the simulations.

6. Results

6.1. Analysis 1: Base Case

The final dyke geometries for 6 realisations of Analysis 1 are presented in Fig. 4. Realisations without any failure are by far the most common type, as illustrated by the example in Fig. 4a. In contrast, Fig. 4b shows an initial failure mechanism, initiating through a weak layer approximately 1.5 m above the base. Due to the weak layer, a slip circle is formed, along which the soil reduces in strength due to strain softening as the failure progresses, as indicated by the dark slip surface. Moreover, due to the large deformations, the sliding mass breaks up into 2 distinct blocks separated by a secondary failure surface inclined at approximately 45° with the slip circle. Since the depth through which

the failure surface forms is limited, the initial failure does not develop further and reaches the stable configuration shown in the figure.

Fig. 4c presents the most likely initial failure mechanism, which occurs along a weaker layer close to the base of the dyke and resembles failure in homogenous material. Again, the sliding mass breaks into 2 blocks separated by a secondary failure surface at approximately 45°. The figure shows some softening in the weak layers directly behind the slip circle, but enough resistance remains to prevent a second (retrogressive) failure and the possibility of flooding.

Retrogressive failure does occur in Fig. 4d and 4e. After an initial slide, a second slide fully develops in both figures; in addition, a third slide partially develops in Fig. 4d and fully develops in Fig. 4e. Once again, breaking up of the sliding masses can be observed. While the height of the dyke is almost unaffected in Fig. 4b and 4c, the height of the dyke reduces in both Fig. 4d and 4e. The final height of the dyke in Fig. 4d is slightly higher than the water level and, in reality, the dyke may flood due to wave-overtopping. However, under the current modelling assumptions, the dyke remains stable and flooding was prevented. In contrast, a flood is triggered in Fig. 4e. In reality, a breach would then occur due to erosion, causing further (catastrophic) damage to the remainder of the dyke; but, since the model immediately stops after flooding, the geometry in Fig. 4e is the final configuration.

A different type of mechanism is shown in Fig. 4f, where an initial

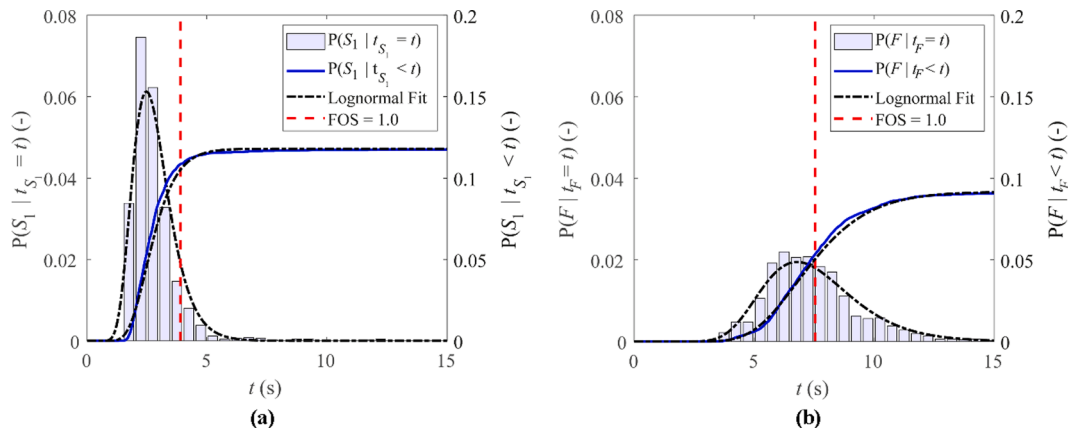


Fig. 5. Probability of failure over time and before a given time for Analysis 1: a) initial failure mechanism; b) flooding.

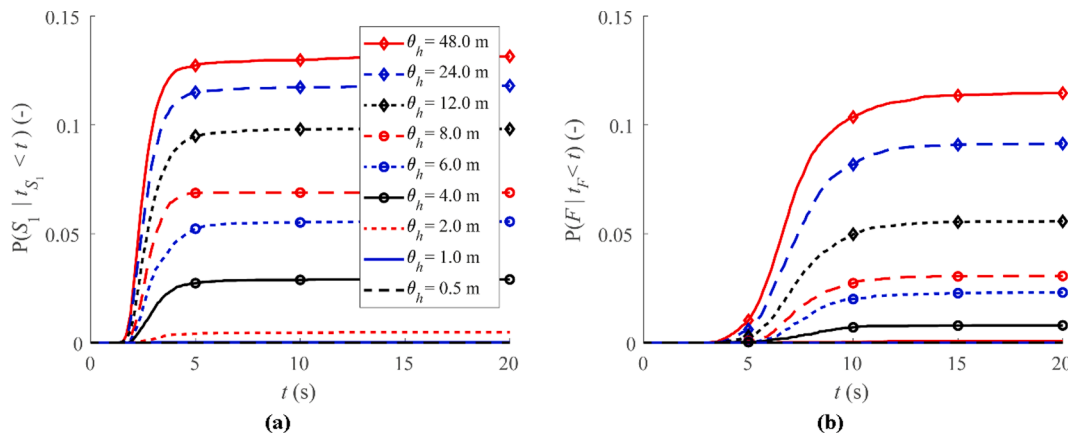


Fig. 6. Probability of failure as a function of time for various horizontal scales of fluctuation (θ_h): a) initial failure mechanism; b) flooding.

rotational slide triggers a horizontal secondary slide along a very weak layer near the base of the dyke, eventually resulting in flooding. This highlights that RMPM is capable of approximating both rotational and horizontal sliding mechanisms.

It is seen that the leading tip of the primary slip surface in Fig. 4b-f is suspended above the remaining slope or foundation, most likely due to the element discretisation adopted in MPM. This error may be removed by including a contact algorithm between bodies (González Acosta et al., 2021). However, in these analyses this effect only occurs towards the

end of the simulation and therefore does not affect the results.

The probability of failure, i.e. the probability of initial failure $P(S_1)$ and flooding $P(F)$, of Analysis 1 over time and the probability of failure before a given time are shown in Fig. 5. The probability of flooding is lower than the probability of initial failure (i.e. $\sim 9\%$ compared to $\sim 12\%$), indicating that residual dyke resistance is present in this analysis. Failure occurs faster than would normally be expected due to the low residual undrained shear strength, the absence of damping and the instantaneous triggering of failure due to the loading conditions.

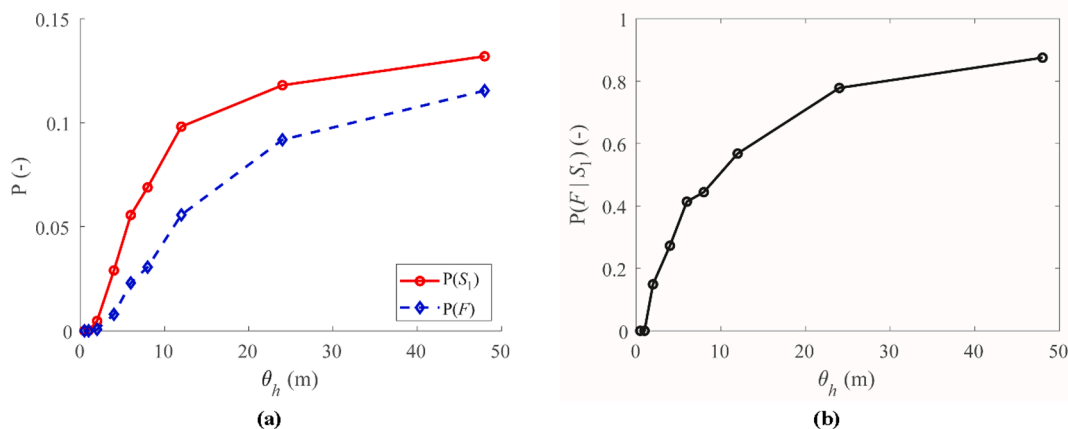


Fig. 7. a) Probabilities of initial failure and flooding and b) probability of flooding given initial failure, i.e. residual dyke resistance, for various horizontal scales of fluctuation (θ_h).

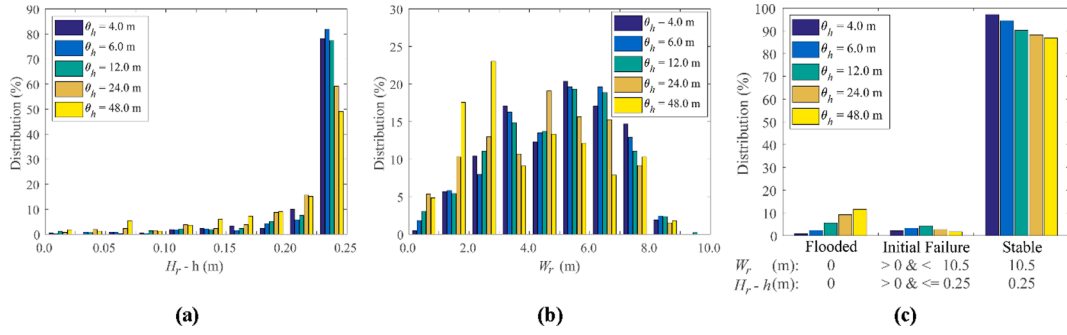


Fig. 8. Histograms of the residual geometry for several horizontal scales of fluctuation expressed as a) height above the water level ($H_r - h$), b) dyke width at the water level W_r and c) indication of excluded and included realisations.

A deterministic MPM simulation based on the mean strength properties ($\mu_{ci} = 13$ kPa and $\mu_{cr} = 5$ kPa) did not lead to initial failure, and gave a Factor of Safety (FOS) ≈ 1.3 . In a deterministic homogeneous MPM simulation with a reduced strength, such that FOS is just below 1 ($c_i \approx 10$ kPa and $c_r \approx 3.85$ kPa), failure occurs after 4 s, and flooding occurs 3.5 s later due to retrogressive failure. By integrating the probability distribution of c_i until 10 kPa, the probability of FOS < 1.0 has been determined as 0.13. Therefore, the estimated probability of initial failure based only on the point statistics (13%) is similar to the probability of initial failure found with RMPM for this problem (12%). However, the difference becomes much larger with smaller values of θ_h , as will be demonstrated by Analysis Set 2. Indeed, with realistic soil properties, when the probability of failure of the dyke is much lower than the one computed here, RFEM (or RMPM) generally computes a much lower probability of initial failure compared to the estimation based only on the point statistics (Hicks et al., 2019). In this case, a reduction in the probability of flooding compared to the probability of initial failure is not observed in the homogeneous MPM simulation, since flooding occurred at the same strength as initial failure. A further reduction in the probability of flooding is observed using RMPM. Therefore, RFEM can be used to reduce the conservatism regarding initial dyke failure by accounting for spatial variability, while RMPM can further reduce this conservatism by also accounting for residual dyke resistance.

6.2. Analysis Set 2: Effect of horizontal scale of fluctuation

6.2.1. Probability of failure

Fig. 6 presents the probability of an initial failure mechanism and the probability of flooding for various horizontal scales of fluctuation, i.e. the results of Analysis Set 2. Fig. 6a shows that, if it occurs, the initial failure mechanism triggers 2 to 5 s after the start of the simulation. As for the Base Case, flooding occurs later if the residual resistance is overcome, see Fig. 6b. The times over which flooding may occur are more widely spread than the times of initial failure.

Fig. 6a and 6b clearly show that, as expected, the probability of flooding is lower than the probability of initial failure for all horizontal scales of fluctuation. Moreover, according to Fig. 7a, the largest absolute decrease in the probability of flooding compared to the probability of initial failure occurs at an intermediate value of θ_h . However, more importantly, Fig. 7b shows that the residual resistance is highest at small horizontal scales of fluctuation, since the probability of flooding given the occurrence of an initial failure is the smallest. Subset simulation could be used to further investigate residual dyke resistance at lower probabilities of initial failure, since the geometry of the failure mechanism may then be different (van den Eijnden & Hicks, 2017). For large horizontal scales of fluctuation, the probability of an initial failure increases and the residual dyke resistance decreases, see Fig. 7. Failures are more likely to occur in weak layers in the presence of larger horizontal scales of fluctuations and retrogressive failure has a greater

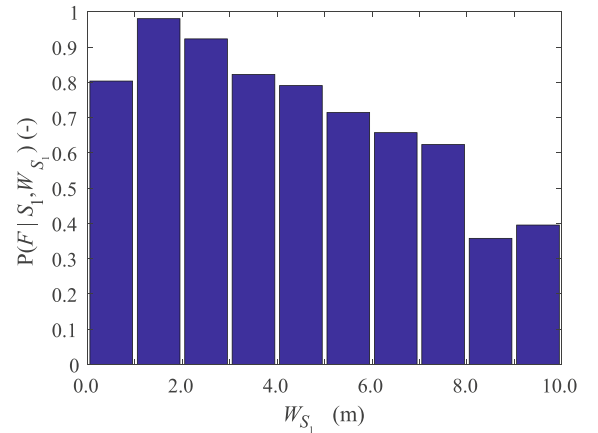


Fig. 9. Histogram of the probability of flooding given initial failure, i.e. residual dyke resistance, as a function of the width of the initial failure.

tendency to occur through these same weak layers, thereby reducing the residual resistance.

6.2.2. Residual dyke geometry

Fig. 8 shows histograms of the residual geometry, $H_r - h$ and W_r , for Analysis Set 2. The histograms in Fig. 8a and 8b exclude completely stable dykes, which all have $W_r \approx 10.5$ m and $H_r - h = 0.25$ m, and flooded dykes, which all have $W_r = H_r - h = 0$, see Fig. 8c. The histograms in Fig. 8a and 8b have been normalised with respect to the total number of included dykes. Horizontal scales of fluctuation below $\theta_h = 4$ m are not presented, because the number of included dykes becomes very small.

Due to the limited height above the water level of the dyke, most failures with residual dyke resistance, i.e. do not flood, do not affect the height of the dyke ($H_r - h \approx 0.25$ m). Therefore, a peak is visible at $H_r - h \approx 0.25$ m (Fig. 8a). The average height above the water table $H_r - h$ is slightly higher for smaller horizontal scales of fluctuation, i.e. 0.22 m for $\theta_h = 4$ m against 0.20 m for $\theta_h = 48$ m.

The residual width tends to be smaller with larger horizontal scales of fluctuation (Fig. 8b). The approximately bi-modal nature of the histograms of residual width are the result of the expected size of the initial and retrogressive failures. Since rotational failures are most likely and significantly influenced by depth (due to the depth-independent statistics) the initial failure mechanism is most likely to result in W_r between 4 and 8 m. Secondary (i.e. retrogressive) failures further reduce W_r to roughly 2–3 m. Secondary failures are more likely for larger horizontal scales of fluctuation, i.e. the peaks for larger horizontal scales of fluctuation are located slightly more to the left in Fig. 8b.

Guidelines (e.g. Blinde et al., 2018; ENW, 2009; MIM, 2016) sometimes positively correlate the dyke width after initial failure (W_{s1}) with

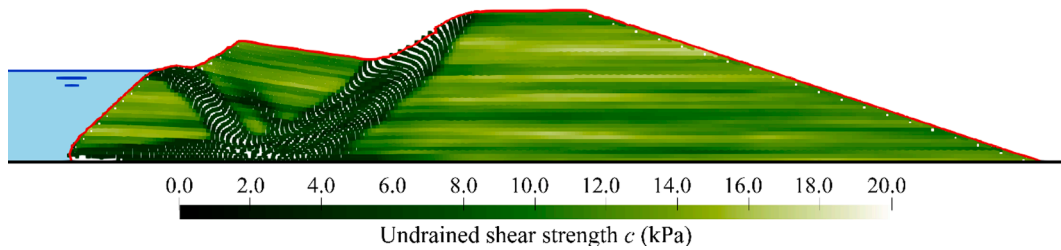


Fig. 10. Realisation from Analysis Set 3 showing the final deformed position, with material points coloured according to the undrained shear strength (c), with an outer slope failure due to a lower water level ($H_i - h = 2$ m). The red line is the detected boundary and the black line is the fixed boundary. The water level is indicatively shown.

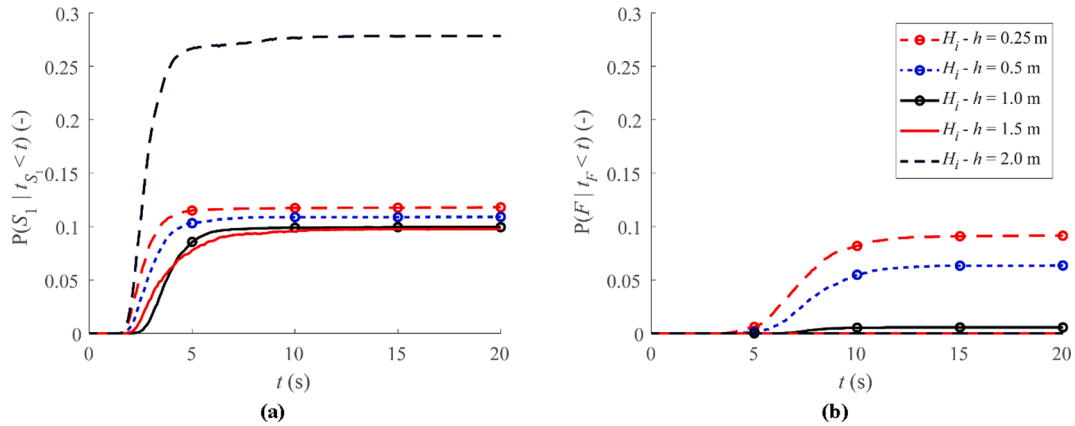


Fig. 11. Probability of failure before a given time for various water levels ($H_i - h$): a) initial failure mechanism; b) flooding.

residual dyke resistance, i.e. the probability of flooding is reduced or nullified for large W_{s1} . The results of all simulations with sufficient results ($\theta_h \geq 4$ m) have been combined in Fig. 9 (again, stable dykes have been excluded from this figure), which shows the distribution of probability of flooding for a given W_{s1} , i.e. $P(F|S_1, W_{s1})$. A negative correlation between the remaining width after initial failure and the probability of flooding is present, suggesting that the reduction in the probability of flooding based on W_{s1} according to the guidelines makes sense. However, even though the positive correlation between W_{s1} and residual dyke resistance is clear, flooding can still be likely after initial failure even at high W_{s1} . Therefore, guidelines which specify a 'safe' remaining geometry, i.e. $P(F|S_1, W_{s1}) = 0$ for W_{s1} larger than a specified minimum, seem risky, especially when the mechanisms after initial failure are not yet fully understood. However, note that the likelihood of flooding after initial failure is heavily influenced by the adopted strength

and softening properties, and by larger horizontal scales of fluctuation (which are more prominent in Fig. 9), as well as by the geometry of the dyke, and is probably much lower in practice. 'Safe' remaining dyke geometries may therefore be more reasonable in practice, although further research is needed to investigate this.

6.3. Analysis Set 3: Effect of water level

The effect of different external water levels, i.e. Analysis Set 3, is presented in Figs. 10–12. At first, the probability of initial failure reduces as the pressure on the dyke decreases ($0.25 \leq H_i - h \leq 1.0$ m, Fig. 11a). However, once the water level reduces further, outward slope failure, as shown in Fig. 10, becomes more likely and the probability of initial failure increases. Of course, outward slope failure can be prevented by using a more gentle slope. The initiation time of the outward slope

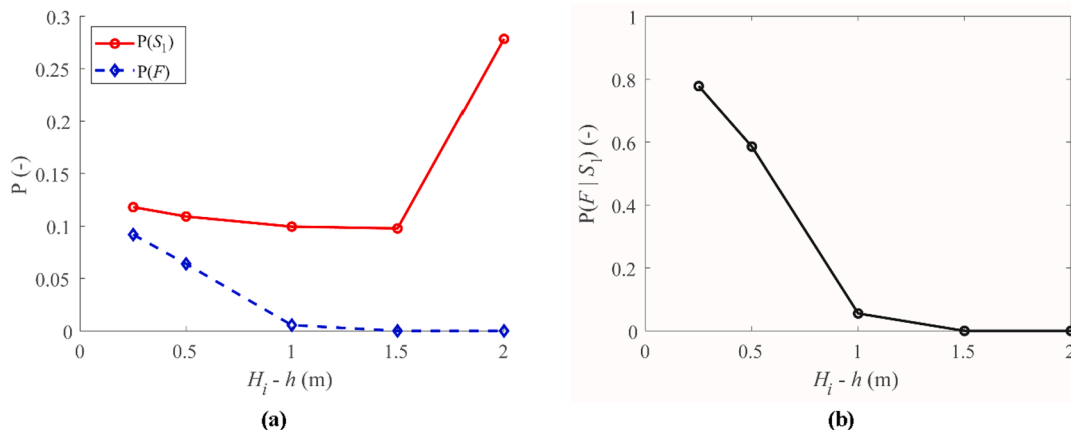


Fig. 12. a) Probability of initial failure and flooding and b) probability of flooding given the probability of initial failure for various water levels ($H_i - h$).

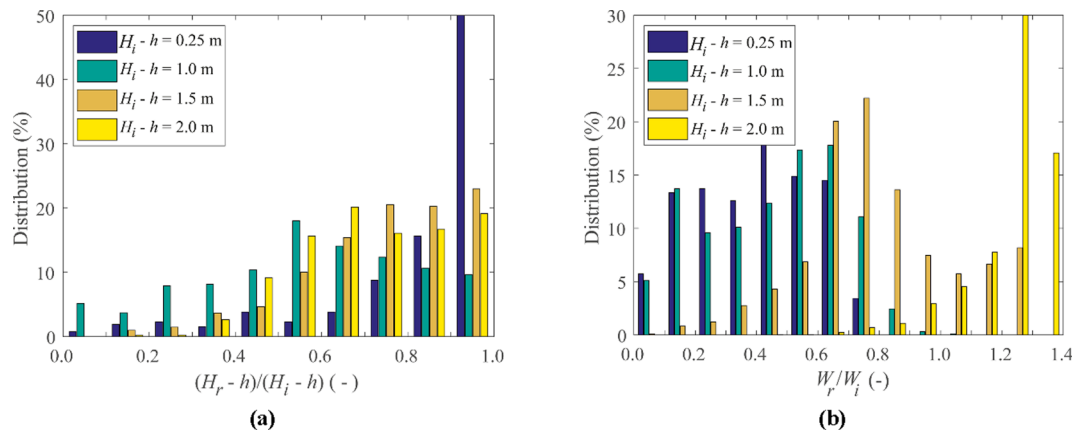


Fig. 13. Histograms of the residual geometry for various outer water levels in terms of a) height above the water level ($H_r - h$) and b) dyke width at the water level (W_r).

failure in this study seems to be faster in most cases than for inward slope failure, probably due to a smaller failed volume.

The initial width of the dyke W_i is larger for lower water levels and therefore, for a larger width, more or larger (retrogressive) failures are necessary to trigger flooding. Moreover, the crest of the dyke needs to settle further to trigger flooding for lower water levels. Consequently, the probability of flooding is comparatively lower for lower water levels (Fig. 11b and 12). Fragility curves would therefore be useful for the macro-instability failure category, as this would inherently take into account the lower probability of flooding at lower water levels, thereby reducing the over conservatism.

Analysis Set 3 assumes a constant water level for each set of realisations, thereby ignoring that an outward slope failure due to a period of low water, followed by a period of high water, can still be dangerous if the required repair works have not yet been performed.

6.3.1. Residual dyke geometry

Fig. 13 shows the distributions of the residual geometry for the various water levels; once again, the histograms exclude completely stable dykes and flooded dykes, and have been normalised). The horizontal axes show the residual geometry normalised with respect to the initial geometry. In general, an $H_i - h$ of 1.5 m or more offers less initial resistance than an $H_i - h$ of 1.0 m or lower due to a switch in the dominant failure mechanism from inner to outer slope failure. However, Fig. 13 shows that a decrease in water level increases the residual resistance, due to the fact that the crest can settle more without triggering flooding (Fig. 13a), and the remaining width at the water level is larger (Fig. 13b). Moreover, Fig. 13b shows that the width of the dyke at the water level may actually increase due to outward slope failure, causing a further increase of residual resistance.

7. Conclusions

A probabilistic framework for Ultimate Limit State (ULS) dyke failure, i.e. flooding, has been developed and an example analysis presented. The Random Material Point Method (RMPM), a numerical method capable of simulating the full failure mechanism and the effect of spatial variability of the material properties, has been used to investigate the residual resistance of an idealised dyke cross-section. This method accounts for the influence of weaker zones on dyke stability, and it therefore leads to an increased probability of initial failure, and consequently to an increased probability of flooding, compared to standard MPM based on mean strengths.

The residual dyke resistance is relatively small in the example, due in part to the chosen softening parameters. This is especially so for materials with layered spatial variability, where a weak layer which triggers a primary mechanism is also likely to trigger secondary mechanisms, i.e.

retrogressive failure. RMPM agrees with existing guidelines which increase residual dyke resistance for smaller initial failures. However, the RMPM analyses do not present a 'safe' remaining geometry, i.e. flooding can always occur due to secondary mechanisms, even if the remaining geometry is large, in part due to the spatial correlation of material properties. The analyses (Analysis Set 3) demonstrate that the water level plays a central role in the dyke assessment, especially for the probability of flooding.

CRediT authorship contribution statement

Guido Remmerswaal: Methodology, Software, Validation, Investigation, Writing - original draft. **Philip J. Vardon:** Conceptualization, Methodology, Supervision, Writing - review & editing. **Michael A. Hicks:** Funding acquisition, Conceptualization, Methodology, Supervision, Writing - review & editing.

Declaration of Competing Interest

The authors declare that they have no known competing financial interests or personal relationships that could have appeared to influence the work reported in this paper.

Acknowledgements

This work is part of the research programme AllRisk which is financed by the Netherlands Organisation for Scientific Research (NWO), project number P15-21 Project 4, and performed on Spider, a new high-throughput data-processing platform at SURFsara.

References

- Andersen, S.M., Andersen, L.V., 2010. Modelling of landslides with the material-point method. *Computational Geosciences* 14 (1), 137–147.
- ASCE, 2005. Minimum Design Loads for Buildings and Other Structures, ASCE/SEI 7–05. American Society of Civil Engineers, Reston, VA.
- Bing, Y., 2017. B-spline based Boundary Method for the Material Point Method. MSc thesis. Durham University.
- Bing, Y., Cortis, M., Charlton, T.J., Coombs, W.M., Augarde, C.E., 2019. B-spline based boundary conditions in the material point method. *Computers and Structures* 212, 257–274.
- Blinde, J., Bisschop, C., de Visser, M., Jongejan, R., Tigchelaar, J., 2018. Factsheet: Afweging ter bepaling glijvlak voor faalmechanisme macrostabiliteit binnenwaarts (translated into English: Consideration for determining failure surface for failure mechanism macro-instability). Kennisplatform Risicobenadering, p. 14.
- Calle, E.O.F., 2002. Dijk doorbraak processen (translated into English: Dyke breach processes). GeoDelft, p. 214.
- CEN, 2002. Eurocode 2: Basis of structural design, EN1990. European Committee for Standardisation, Brussels.
- CEN, 2004. Eurocode 7: Geotechnical design - Part 1: General rules, EN1997-1. European Committee for Standardisation, Brussels.

- Cortis, M., Coombs, W.M., Augarde, C.E., Brown, M., Brennan, A., Robinson, S., 2018. Imposition of essential boundary conditions in the material point method. *International Journal for Numerical Methods in Engineering* 113 (1), 130–152.
- de Gast, T., Vardon, P.J., Hicks, M.A., 2017. Estimating spatial correlations under man-made structures on soft soils. In: *Proceedings of the 6th International Symposium on Geotechnical Safety and Risk*, pp. 382–389.
- ENW, 2009. Actuele sterkte van dijken (translated into English: Actual strength of dikes). Expertisenetwerk Water Veiligheid, p. 136.
- Fenton, G.A., Vanmarcke, E.H., 1990. Simulation of random fields via local average subdivision. *Journal of Engineering Mechanics* 116 (8), 1733–1749.
- Fern, E.J., de Lange, D.A., Zwanenburg, C., Teunissen, J.A.M., Rohe, A., Soga, K., 2017. Experimental and numerical investigations of dyke failures involving soft materials. *Engineering Geology* 219, 130–139.
- Fern, E.J., Rohe, A., Soga, K., Alonso, E.E., 2019. *The Material Point Method for Geotechnical Engineering: a Practical Guide*. CRC Press.
- González Acosta, J.L., Vardon, P.J., Remmerswaal, G., Hicks, M.A., 2020. An investigation of stress inaccuracies and proposed solution in the material point method. *Computational Mechanics* 65, 555–581.
- González Acosta, J.L., Vardon, P.J., Hicks, M.A., 2021. Development of an implicit contact algorithm for the material point method. *Computers and Geotechnics* 30, 103859. <https://doi.org/10.1016/j.compgeo.2020.103859>.
- Griffiths, D.V., Fenton, G.A., 2004. Probabilistic slope stability analysis by finite elements. *Journal of Geotechnical and Geoenvironmental Engineering* 130 (5), 507–518.
- Hicks, M.A., Li, Y., 2018. Influence of length effect on embankment slope reliability in 3D. *International Journal for Numerical and Analytical Methods in Geomechanics* 42 (7), 891–915.
- Hicks, M.A., Samy, K., 2002. Influence of heterogeneity on undrained clay slope stability. *Quarterly Journal of Engineering Geology and Hydrogeology* 35 (1), 41–49.
- Hicks, M.A., Spencer, W.A., 2010. Influence of heterogeneity on the reliability and failure of a long 3D slope. *Computers and Geotechnics* 37 (7–8), 948–955.
- Hicks, M.A., Varkey, D., van den Eijnden, A.P., de Gast, T., Vardon, P.J., 2019. On characteristic values and the reliability-based assessment of dykes. *Georisk: Assessment and Management of Risk for Engineered Systems and Geohazards* 13 (4), 313–319.
- Huang, J., Griffiths, D.V., 2015. Determining an appropriate finite element size for modelling the strength of undrained random soils. *Computers and Geotechnics* 69, 506–513.
- Leclercq, V.J.F., 2020. Residual strength and profile of the Eemdijk fullscale test. MSc thesis. Delft University of Technology.
- Martinelli, M., Rohe, A., Soga, K., 2017. Modeling dike failure using the Material Point Method. *Procedia Engineering* 175, 341–348.
- Klein Breteler, M., 't Hart, R., Verheij, H., Knoeff, H., 2009. Reststerkte van dijken na initiele schade (translated into English: Residual resistance of dykes after initial damage) (p. 515). Deltares.
- MIM. (2016). Schematiseringshandleiding Macrostabiteit (translated into English: Guidelines for schematisation of macro-instability) (p. 173). Ministerie van Infrastructuur en Milieu.
- MIM. (2017a). Regeling veiligheid primaire waterkeringen - Bijlage III Sterkte en veiligheid (translated into English: Regulation primary flood defences - Attachment III Strength and safety) (p. 148). Ministerie van Infrastructuur en Milieu.
- MIM. (2017b). Regeling veiligheid primaire waterkeringen 2017 - Bijlage I Procedure (translated into English: Regulation primary flood defences - Attachment I Procedure) (p. 74). Ministerie van Infrastructuur en Milieu.
- van Montfoort, M., 2018. Safety assessment method for macro-stability of dikes with high foreshores. MSc thesis. Delft University of Technology.
- Phuong, N.T.V., van Tol, A.F., Elkadi, A.S.K., Rohe, A., 2016. Numerical investigation of pile installation effects in sand using material point method. *Computers and Geotechnics* 73, 58–71.
- Remmerswaal, G., 2017. Development and implementation of moving boundary conditions in the Material Point Method. MSc thesis. Delft University of Technology.
- Remmerswaal, G., Bolognin, M., Vardon, P.J., Hicks, M.A., Rohe, A., 2019a. Implementation of non-trivial boundary conditions in MPM for geotechnical applications. In: *Proceedings of the 2nd International Conference on the Material Point Method for Modelling Soil-Water-Structure Interaction*, pp. 61–67.
- Remmerswaal, G., Hicks, M.A., Vardon, P.J., 2019b. Influence of residual dyke strength on dyke reliability using the random material point method. In: *Proceedings of the 7th International Symposium on Geotechnical Safety and Risk (ISGSR)*, pp. 775–780.
- Schneider, J., 2006. Introduction to Safety and Reliability of Structures, (2nd ed.). International Association for Bridge and Structural Engineering.
- Sethian, A.J., 1996. Theory, algorithms, and applications of level set methods for propagating interface. *Acta Numerica* 5, 309–395.
- Simm, J., Gouldby, B., Sayers, P., Flikweert, J.J., Wersching, S., Bramley, M., 2009. Representing fragility of flood and coastal defences: Getting into the detail. In: Samuels, P., Huntington, S., Allsop, W., Harrop, J. (Eds.), *Proceedings of the European Conference on Flood Risk Management Research into Practice (FLOODRISK 2008)*. Taylor & Francis Group, pp. 621–631.
- Sulsky, D., Chen, Z., Schreyer, H.L., 1994. A particle method for history-dependent materials. *Computer Methods in Applied Mechanics and Engineering* 118 (1–2), 179–196.
- 't Hart, R., de Bruijn, H., de Vries, G., 2016. *Faalmechanismen WTI (translated into English: Phenomenological description: Failure mechanisms WTI) (p. 208)*. Deltares.
- van den Eijnden, A.P., Hicks, M.A., 2017. Efficient subset simulation for evaluating the modes of improbable slope failure. *Computers and Geotechnics* 88, 267–280.
- van den Eijnden, A.P., Hicks, M.A., 2018. Probability-dependent failure modes of slopes and cuts in heterogeneous cohesive soils. *Géotechnique Letters* 8 (3), 214–218.
- van der Krogt, M.G., Schweckendiek, T., Kok, M., 2019. Do all dike instabilities cause flooding? In: *13th International Conference on Applications of Statistics and Probability in Civil Engineering, ICASP 2019*.
- Vardon, P.J., Liu, K., Hicks, M.A., 2016. Reduction of slope stability uncertainty based on hydraulic measurement via inverse analysis. *Georisk: Assessment and Management of Risk for Engineered Systems and Geohazards* 10 (3), 223–240.
- Varkey, D., Hicks, M.A., Vardon, P.J., 2021. Uncertainties in geometry, material boundary and shear strength properties of a 3D embankment slope. Submitted for Publication.
- Wang, B., Hicks, M.A., Vardon, P.J., 2016a. Slope failure analysis using the random material point method. *Géotechnique Letters* 6 (2), 113–118.
- Wang, B., Vardon, P.J., Hicks, M.A., 2016b. Investigation of retrogressive and progressive slope failure mechanisms using the material point method. *Computers and Geotechnics* 78, 88–98.
- Wang, B., Vardon, P.J., Hicks, M.A., Chen, Z., 2016c. Development of an implicit material point method for geotechnical applications. *Computers and Geotechnics* 71, 159–167.
- Waterwet, 2009. Waterlaw. Dutch Government, Statute number: BWBR0025458.
- Zabala, F., Alonso, E.E., 2011. Progressive failure of Aznalcó Llar dam using the material point method. *Géotechnique* 61 (9), 795–808.
- Zuada Coelho, B., Rohe, A., Aboufirass, A., Nuttall, J.D., Bolognin, M., 2019. Assessment of dike safety within the framework of large deformation analysis with the material point method. *Numerical Methods in Geotechnical Engineering IX* 657–663.